

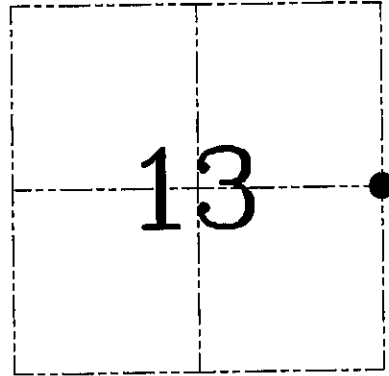
U.S. PUBLIC LAND SURVEY MONUMENT RECORD – GRANT COUNTY, WI

Section 13, Town 7 North Range 3 West, Town of Marion

CERTIFICATE

I, Larry L. Austin, do hereby certify that the corner location on this record was determined by me and/or under my direct supervision and that this U.S. public land survey monument record is correct and complete to the best of my knowledge and belief.

Larry L. Austin
Larry L. Austin, S-1903



● = CORNER LOCATION

HISTORY OF CORNER ESTABLISHMENT

Corner was originally set by Lyon. In 2000 Schmit set a County Monument at this location. No other record of the corner was found.

DESCRIPTION OF CORNER EVIDENCE FOUND

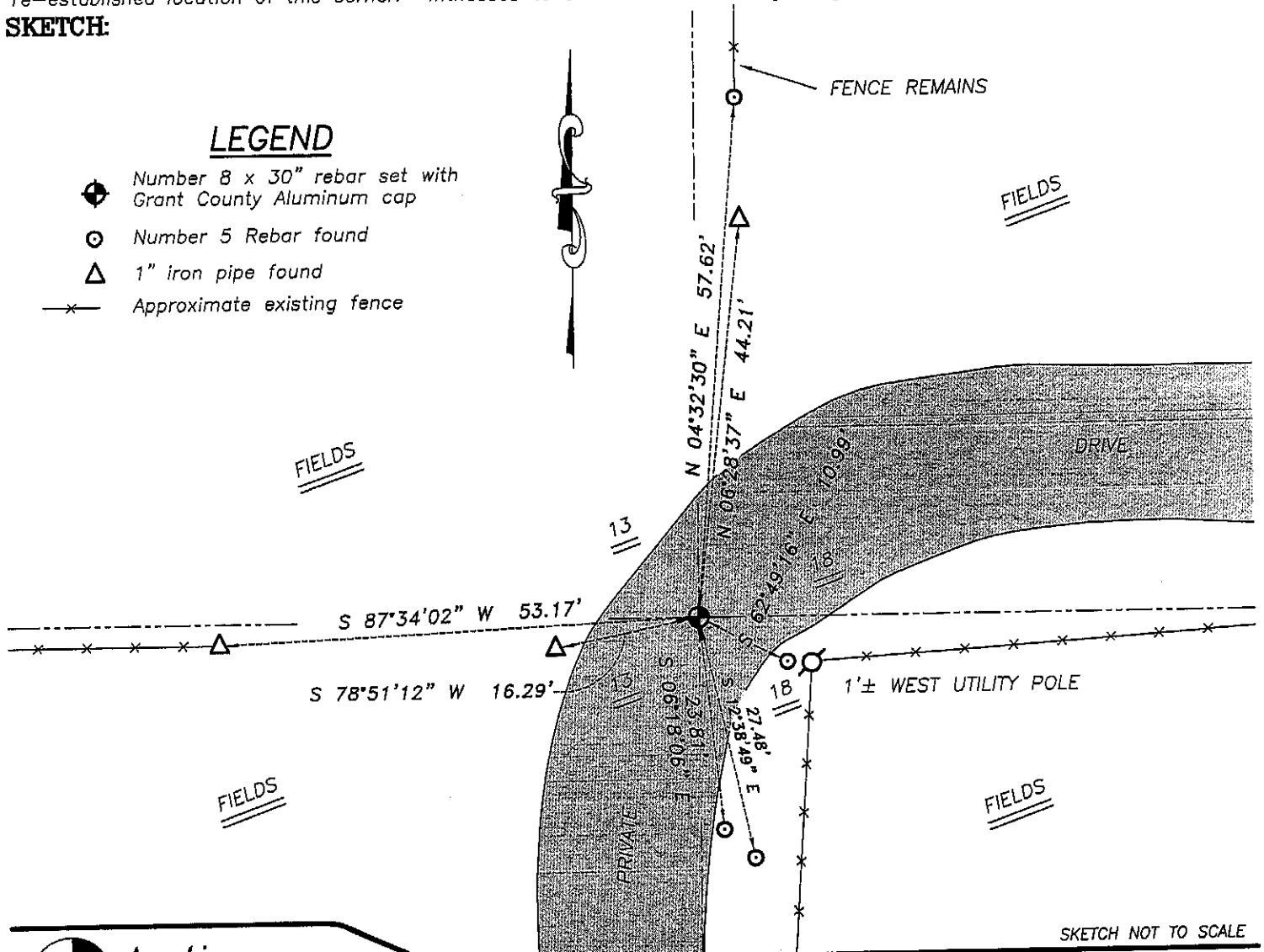
I was unable to locate Schmit's monument. I reset the corner as shown below. Verified this location using EDM & GPS methods.

DESCRIPTION OF CORNER AND WITNESS MONUMENTS, references and accessories used to perpetuate the original or re-established location of this corner. Witnesses to corner location Bobby Sedgwick & Brad Digman & Shane Austin

SKETCH:

LEGEND

- ⊕ Number 8 x 30" rebar set with Grant County Aluminum cap
- ⊙ Number 5 Rebar found
- △ 1" iron pipe found
- x- Approximate existing fence



SKETCH NOT TO SCALE



Austin Engineering LLC

4211 HWY 81 E, LANCASTER, WI 53813
PHONE 608-723-6363 FAX 608-723-6702

JOB NUMBER 06S320
FIELDBOOK: TDSR, 2608
G:\T7NR3W\14
H:\TIE\T7NR3W\60

DRAWN BY: SW AUSTIN
APPROVED: LL AUSTIN

U.S. PUBLIC LAND SURVEY MONUMENT RECORD

(As Required By s. A-E 7.08, WI Adm. Code)

History of original corner establishment and subsequent restorations and description of any record, monument, occupational, testimonial or other evidence considered:

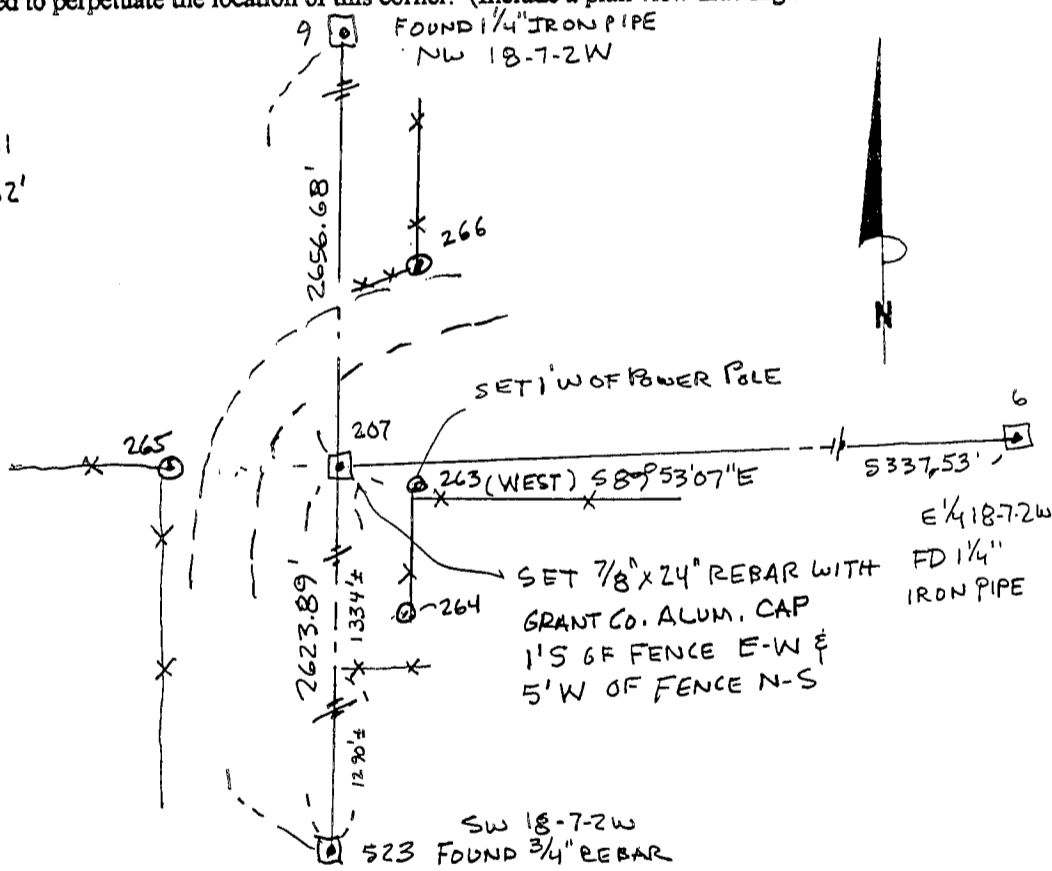
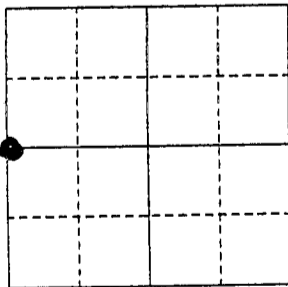
HISTORY IS THE ORIGINAL GOUT SURVEY. A SURVEY FOR EARL SHAEFER SHOWS THE E-W 1/4 LINE OF SECTION 18. I RETRACED LINE FROM THAT SURVEY TO INTERSECT EXISTING MONUMENTS AT THE NW & SW SECTION CORNER OF SECTION 18. THE CORNER LOCATION RESULTING FITS BETTER TO OCCUPATION EVIDENCE FOUND ALONG THE W LINE OF SECTION 18 THAN THE CORNER LOCATION RESULTING FROM SINGLE CORNER WAS: (Check All That Apply) PROPORTIONATE MEASUREMENT BETWEEN NW & SW CORNER MONUMENTS AS FOUND

- Restored through acceptance of an obliterated evidence location
- Restored through acceptance of a found perpetuated location
- Considered a lost corner and reestablished through lost corner proportionate methods (include a plan view drawing showing distances and directions to other Public Land Survey Corners used for proportioning and determining the corner location)
- Restored or reestablished in a location that differs from a previous restoration or reestablishment (include a plan view drawing and indicate what was set and /or found)

Describe the monument and accessories used to perpetuate the location of this corner. (Include a plan view drawing and indicate what was set and/or found)

207-263 S65°17'18"E 10.99
 207-264 S130°31'46"E 27.08
 207-265 S87°54'19"W 52.61
 207-266 N4°53'58"E 57.62'

The W 1/4
 corner of Section 18
 T. 7N N., R. 2W
GRANT County, Wisconsin
 Job ID: 995-252
 Book # _____



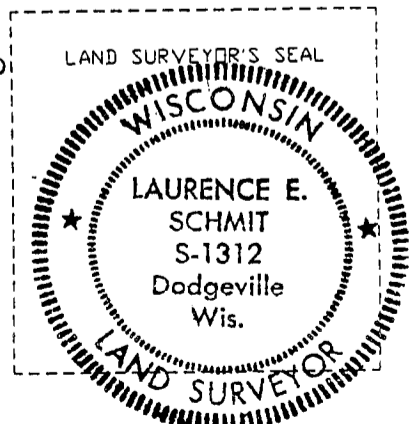
LEGEND:

- SECTION CORNER AS DESCRIBED
- () RECORDED AS

● = Location of Corner

I, LAURENCE E. SCHMIT
 Type or print name) certify that the corner location shown on this record was determined by me or under my direction and control and that this U.S. Public Land Survey Monument Record is correct and complete to the best of my knowledge and belief.

Laurence E. Schmit 9-29-2000
 Signature Date



Index No. 54