

**U.S. PUBLIC LAND SURVEY MONUMENT RECORD**

(As Required By s. A-E 7.08, WI Adm. Code)

History of original corner establishment and subsequent restorations and description of any record, monument, occupational, testimonial or other evidence considered:  
 HISTORY IS THE ORIG. GOV'T SURVEY AND SURVEY BY WHITNEY IN 1857. HE DID NOT INDICATE ANY MONUMENT AT CORNER BUT DID SET STONE MONUMENT AT E 1/16 OF THE SE CORNER. NO EVIDENCE FOUND IN AREA OF CORNER. COMPUTED CORNER BY DOUBLE PROPORTIONATE METHOD BETWEEN A N-S-W fence intersection and OCCUPIED "NE" CORNER OF S 3/4 OF NE 1/4 & SE 1/4 12-7-3W & SW COR. OF 13-7-3W & FD MONUMENT AT N 1/4 13-7-3W & N-S FENCE NEAR THE NW 1/4 OF 14-7-3W

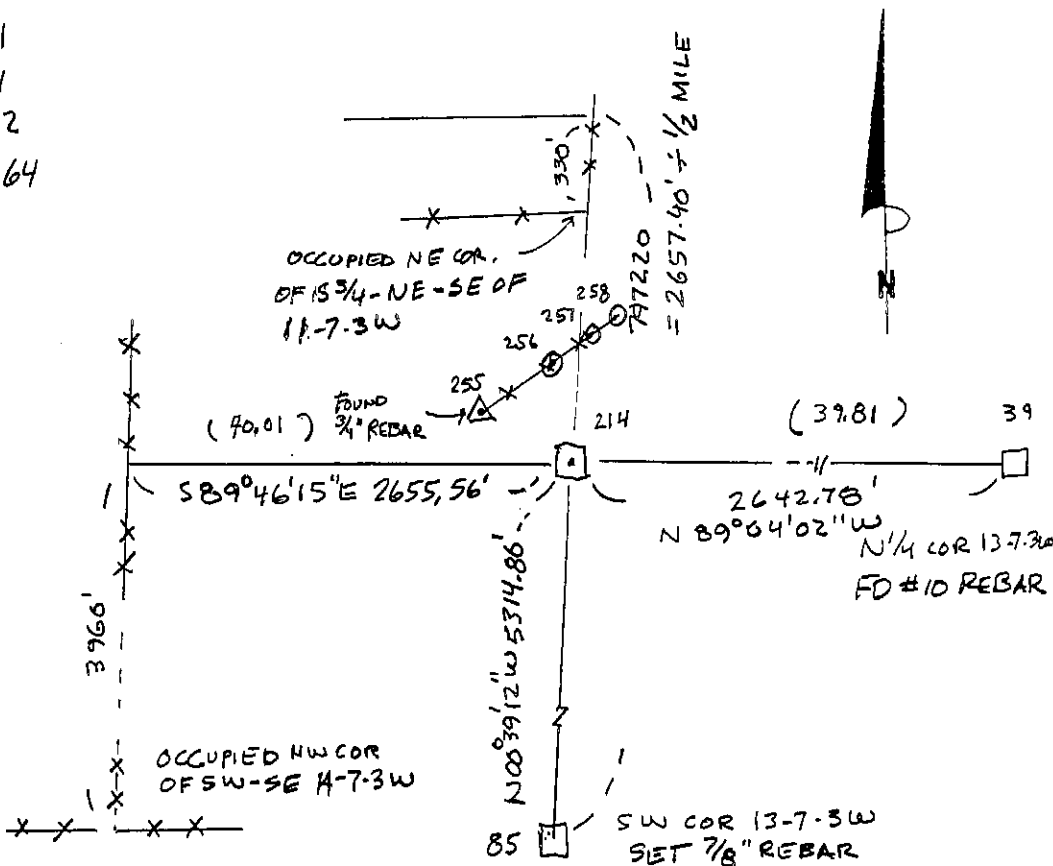
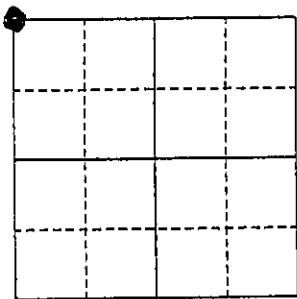
Corner was: (Check All That Apply)

- Restored through acceptance of an obliterated evidence location
- Restored through acceptance of a found perpetuated location
- Considered a lost corner and reestablished through lost corner proportionate methods (include a plan view drawing showing distances and directions to other Public Land Survey Corners used for proportioning and determining the corner location)
- Restored or reestablished in a location that differs from a previous restoration or reestablishment (include a plan view drawing and indicate what was set and/or found)

Describe the monument and accessories used to perpetuate the location of this corner. (Include a plan view drawing and indicate what was set and/or found)

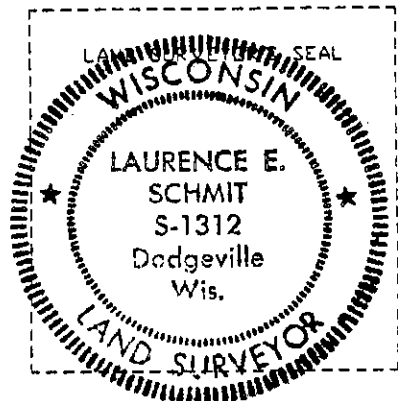
214-255 N 27°14'51"W 253.61  
 214-256 N 12°28'15"W 275.41  
 214-257 N 0°29'06"E 315.42  
 214-258 N 11°53'28"E 389.64

The NW  
 corner of Section 13  
 T. 7 N., R. 3W ~~W.~~  
GRANT County, Wisconsin  
 Job ID: 99S-252  
 Book # \_\_\_\_\_



**LEGEND:**

- SECTION CORNER AS DESCRIBED
- FENCE
- ( ) RECORDED AS
- ⊙ SET 3/8" REBAR TIES



I, LAURENCE E. SCHMIT  
 (Type or print name) certify that the corner location shown on this record was determined by me or under my direction and control and that this U.S. Public Land Survey Monument Record is correct and complete to the best of my knowledge and belief.

Laurence E. Schmit 9-29-2000  
 Signature Date

Index No. 43