

# U.S. PUBLIC LAND SURVEY MONUMENT RECORD - GRANT COUNTY, WI

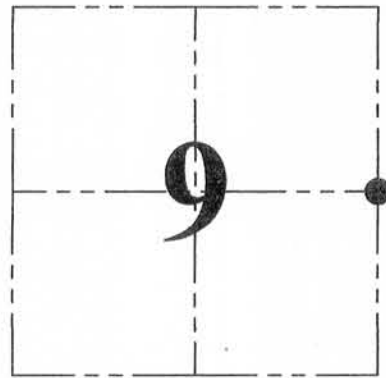
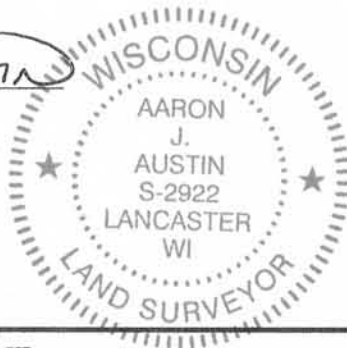
Section 9, Town 7 North Range 3 West, Town of Marion

**CERTIFICATE:**

I, Aaron J. Austin, do hereby certify that the corner location on this record was determined by me and/or under my direct supervision and that this U.S. Public Land Survey Monument Record is correct and complete to the best of my knowledge and belief.

Dated this 30th day of April, 2014.

*Aaron J. Austin*  
 Aaron J. Austin, S-2922



● = CORNER LOCATION

HISTORY OF CORNER ESTABLISHMENT:

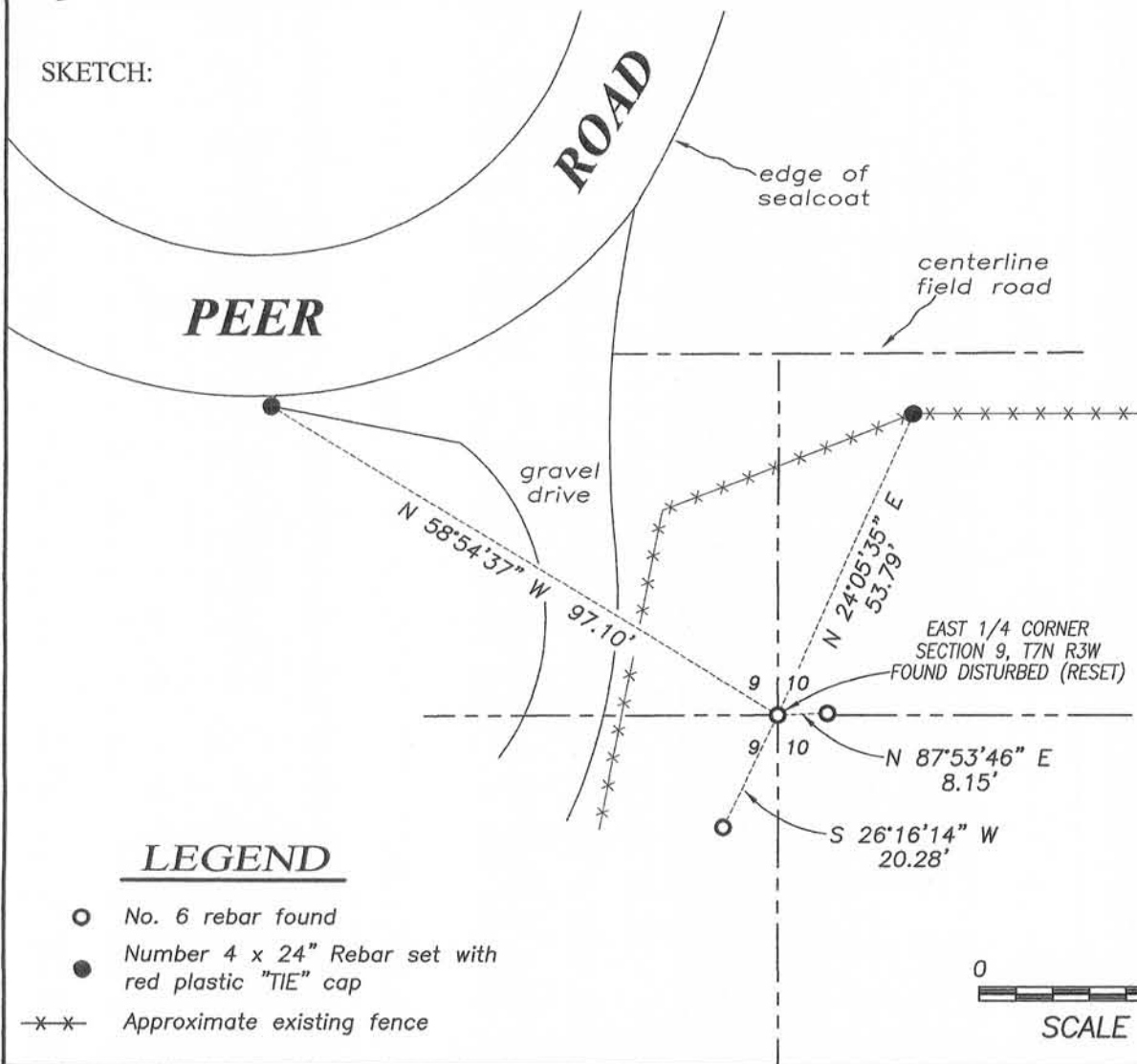
1833 Harvey Parke set original corner.  
 1990 Keith Dalsing reset the corner and filed a U.S. Public Land Survey Monument Record.  
 2001 James Baker found the corner and prepared a U.S. Public Land Survey Monument Record.

DESCRIPTION OF CORNER EVIDENCE FOUND:

I found a disturbed No. 6 rebar at the corner location. I reset the corner based upon 2 found ties and set 2 new ties. I verified this location with E.D.M. and G.P.S methods.

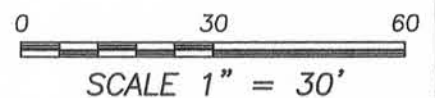
DESCRIPTION OF CORNER AND WITNESS MONUMENTS, references and accessories used to perpetuate the original or re-established location of this corner. Witnesses to corner location Shane Austin.

SKETCH:



**LEGEND**

- No. 6 rebar found
- Number 4 x 24" Rebar set with red plastic "TIE" cap
- x-x- Approximate existing fence



4211 HWY 81 E, LANCASTER, WI 53813  
 PHONE: 608-723-6363 FAX: 608-723-6702

JOB NO: 14s032  
 G:\14s032  
 H:\TIE\T7NR3W\37

FIELDBOOK: TDSR  
 DRAWN BY: AJ AUSTIN  
 CREW: SW AUSTIN



# US. PUBLIC LAND SURVEY MONUMEN. RECORD

FEB 1 1990

CORNER DESCRIPTION: SE CORNER, SECTION 09, T 7 N, R 3W

STATE PLANE COORDINATES: N \_\_\_\_\_, E \_\_\_\_\_

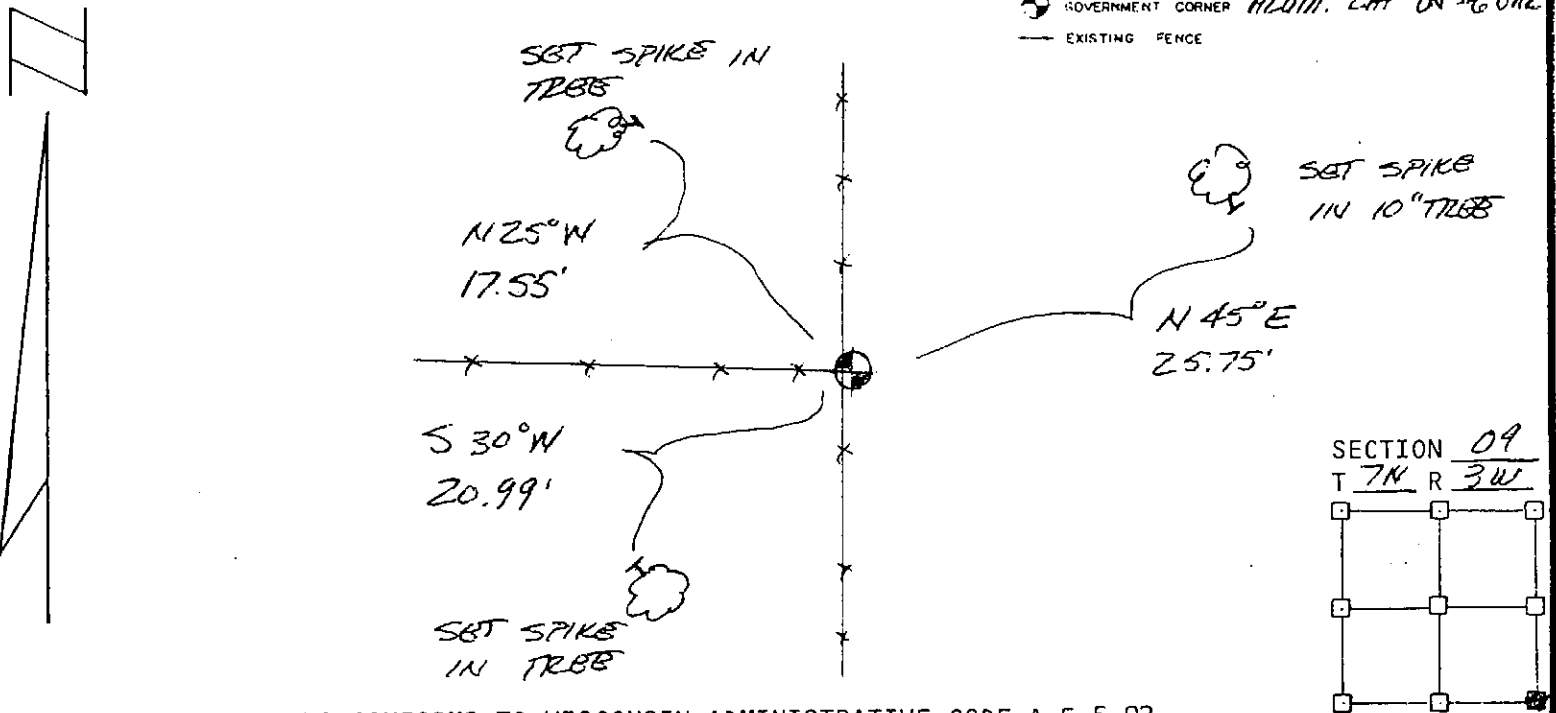
THETA ANGLE: \_\_\_\_\_

HORIZONTAL DATUM: WISCONSIN STATE PLANE COORDINATE SYSTEM, SOUTH ZONE

EVIDENCE: ACCEPTED OCCUPATION AND MEASURED WITH BDM TRIANGLES  
DE AREA

MONUMENT: FOUND , PLACED   
METHOD OF RESTORATION (RE-ESTABLISHMENT):  
 ACCEPTED EXISTING MONUMENT  
 ACCEPTED OCCUPATION  
 LOST CORNER PROPORTIONATE METHODS  
 DATE CORNER SET: JAN 29, 1990

- LEGEND**
- A SET #6 REBAR, 113 LBS PER LINEAL FT MIN WT
  - SET "X24" IRON PIPE, 113 LBS PER LINEAL FT MIN WT
  - SET 2" X 30" IRON PIPE, 365 LBS PER LINEAL FT MIN WT
  - FOUND 1" IRON PIPE
  - FOUND 2" IRON PIPE
  - ⌵ FOUND R/R SPIKE
  - SET R/R SPIKE
  - GOVERNMENT CORNER ALUM. CAP ON #6 B/R
  - EXISTING FENCE

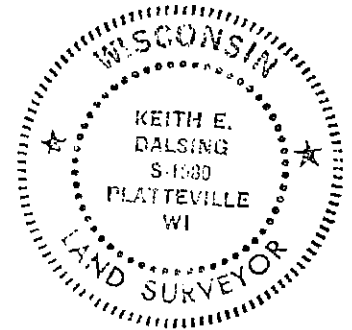


NOT TO SCALE THIS CONFORMS TO WISCONSIN ADMINISTRATIVE CODE A-E 5.02

SURVEYOR'S AFFIDAVIT:  
STATE OF WISCONSIN)  
GRANT COUNTY) SS

I hereby certify that I, KEITH E. DALRING have complied with the Wisconsin State Statutes, Statutes of the United States, and the rules and regulations made by the Secretary of the Interior in the location of the corner shown above.

DATE OF SURVEY: FEB 1 1990 Keith E. Dalring  
REGISTERED LAND SURVEYOR  
# 5-1929



**D. F. BURBACH MUNICIPAL & CIVIL ENGINEERS**

5992 STATE HIGHWAY 80 SOUTH • P.O. BOX 721 • PLATTEVILLE, WISCONSIN 53818 • (608) 348-3262

