

GRANT COUNTY CERTIFIED LAND CORNER

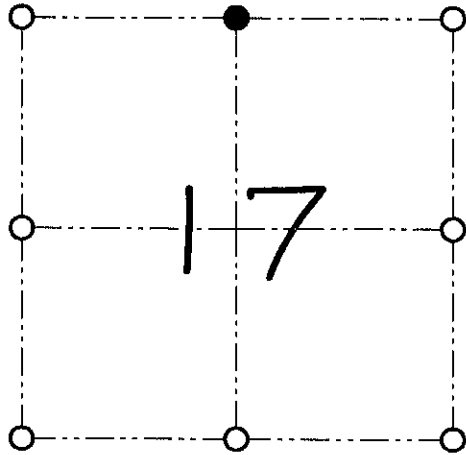
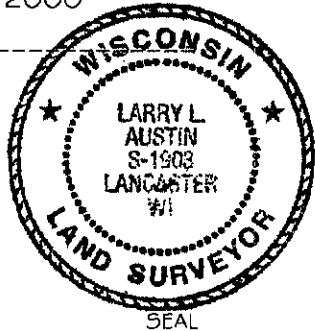
CORNER NUMBER 50

CERTIFICATE:

I, Larry L. Austin, do hereby certify that on the 11th day of April, 2000, I found evidence of the North 1/4 corner of Section 17, Town 7 North, Range 3 West, of the 4th Principal Meridian, and I re-established said corner according to the Wisconsin statutes as shown and described hereon.

Dated this 21st day of April, 2000

Larry L. Austin
Larry L. Austin S-1903



● = CORNER LOCATION

NORTH 1/4 CORNER OF SECTION 17, T 7 N R 3 W TOWN OF MARION

HISTORY OF ORIGINAL CORNER ESTABLISHMENT:

Corner was originally set in 1833 by Harvey Parke.
In 1988 I set an Aluminum monument at an occupied fence corner.

DESCRIPTION OF CORNER EVIDENCE FOUND:

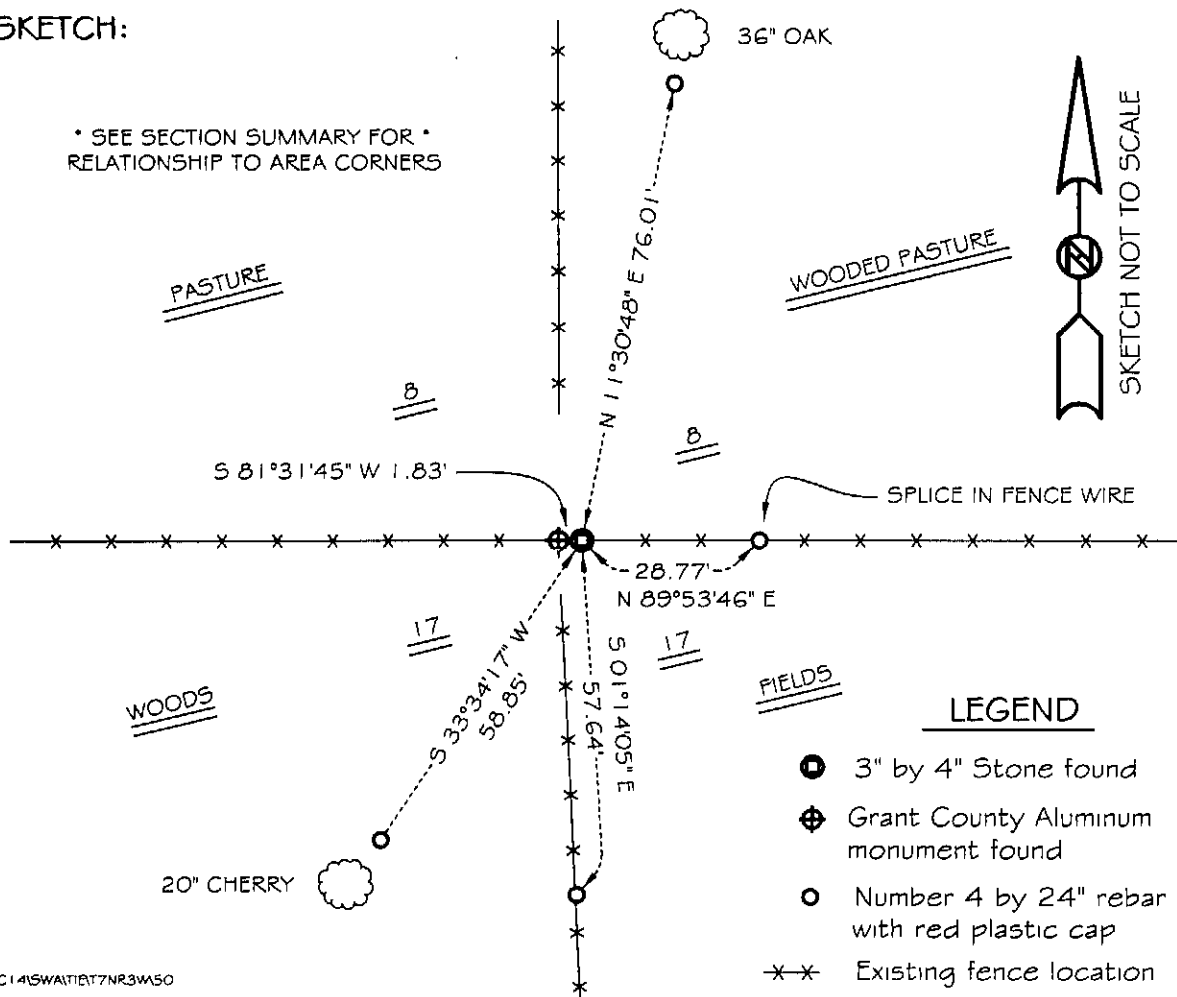
I found the existing Aluminum monument to be incorrect.
I found an existing 3" x 4" stone near the fence corner and accepted it's location after an E.D.M. & G.P.S. traverse of the area.

DESCRIPTION OF CORNER AND WITNESS MONUMENTS, references and accessories used to perpetuate the original or re-established location of this corner

WITNESS TO THE CORNER LOCATION: SHANE AUSTIN & SHELBY BLINDERT

SKETCH:

* SEE SECTION SUMMARY FOR *
RELATIONSHIP TO AREA CORNERS



LEGEND

- 3" by 4" Stone found
- ⊕ Grant County Aluminum monument found
- Number 4 by 24" rebar set with red plastic cap
- xx Existing fence location

C:\SC14\SWAIT\T7NR3W450

JUN 14 2001