

# RECORD OF CORNER MONUMENTATION

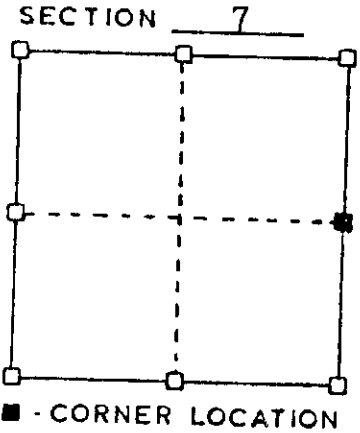
E 1/4 CORNER, SECTION 7 TOWNSHIP 7 N., RANGE 3 W  
 Grant COUNTY, WISCONSIN.

STATE PLANE COORDINATES OF \_\_\_\_\_  
 (Y) NORTH \_\_\_\_\_ ELEVATION \_\_\_\_\_  
 (X) EAST \_\_\_\_\_

HORIZONTAL DATUM: WISCONSIN STATE PLANE COORDINATE SYSTEM, SOUTH ZONE

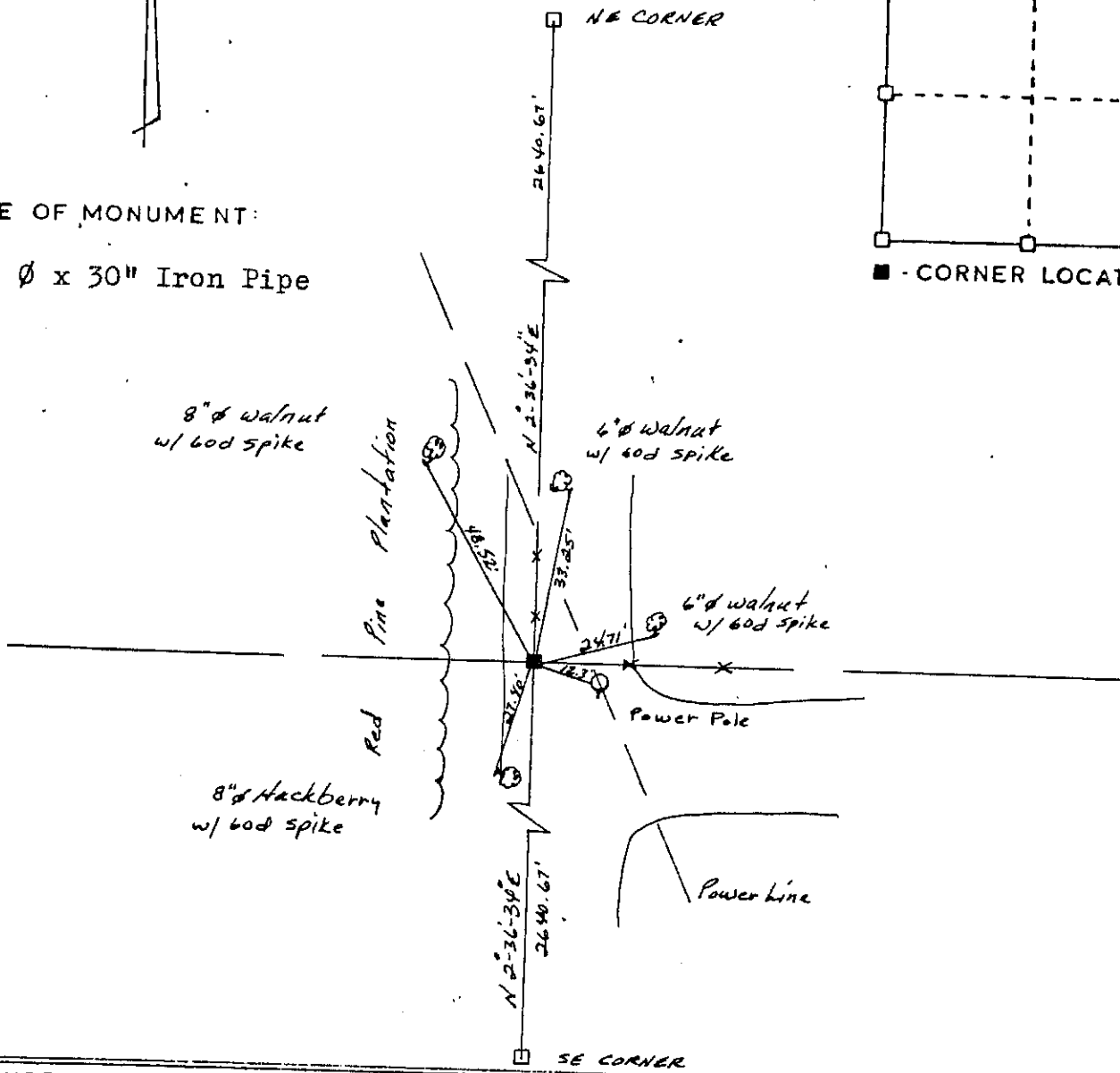


SKETCH OF CORNER  
REFERENCE TIES



TYPE OF MONUMENT:

2" Ø x 30" Iron Pipe



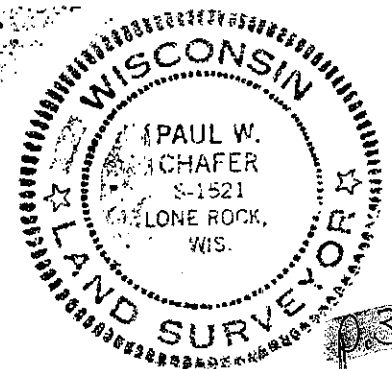
SURVEYOR'S CERTIFICATE  
 STATE OF WISCONSIN }  
 Grant County )

I HEREBY CERTIFY THAT I monumented the corner shown and set the references to perpetuate the location. Said corner was located by single proportion from an EDM traverse of the east line of Section 7.

DATED THIS 25 DAY OF  
March 1986

*Paul W. Chaper*  
 REGISTERED LAND SURVEYOR  
 S- 1521

GRANT COUNTY  
 MAR 27 1986



35