

# RECORD OF CORNER MONUMENTATION

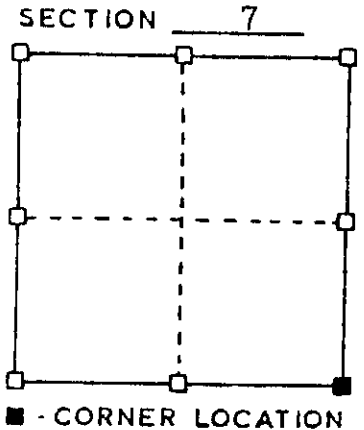
Southeast CORNER, SECTION 7 TOWNSHIP 7 N., RANGE 3 W  
Grant COUNTY, WISCONSIN.

STATE PLANE COORDINATES OF \_\_\_\_\_  
(Y) NORTH \_\_\_\_\_ ELEVATION \_\_\_\_\_  
(X) EAST \_\_\_\_\_

HORIZONTAL DATUM: WISCONSIN STATE PLANE COORDINATE SYSTEM, SOUTH ZONE

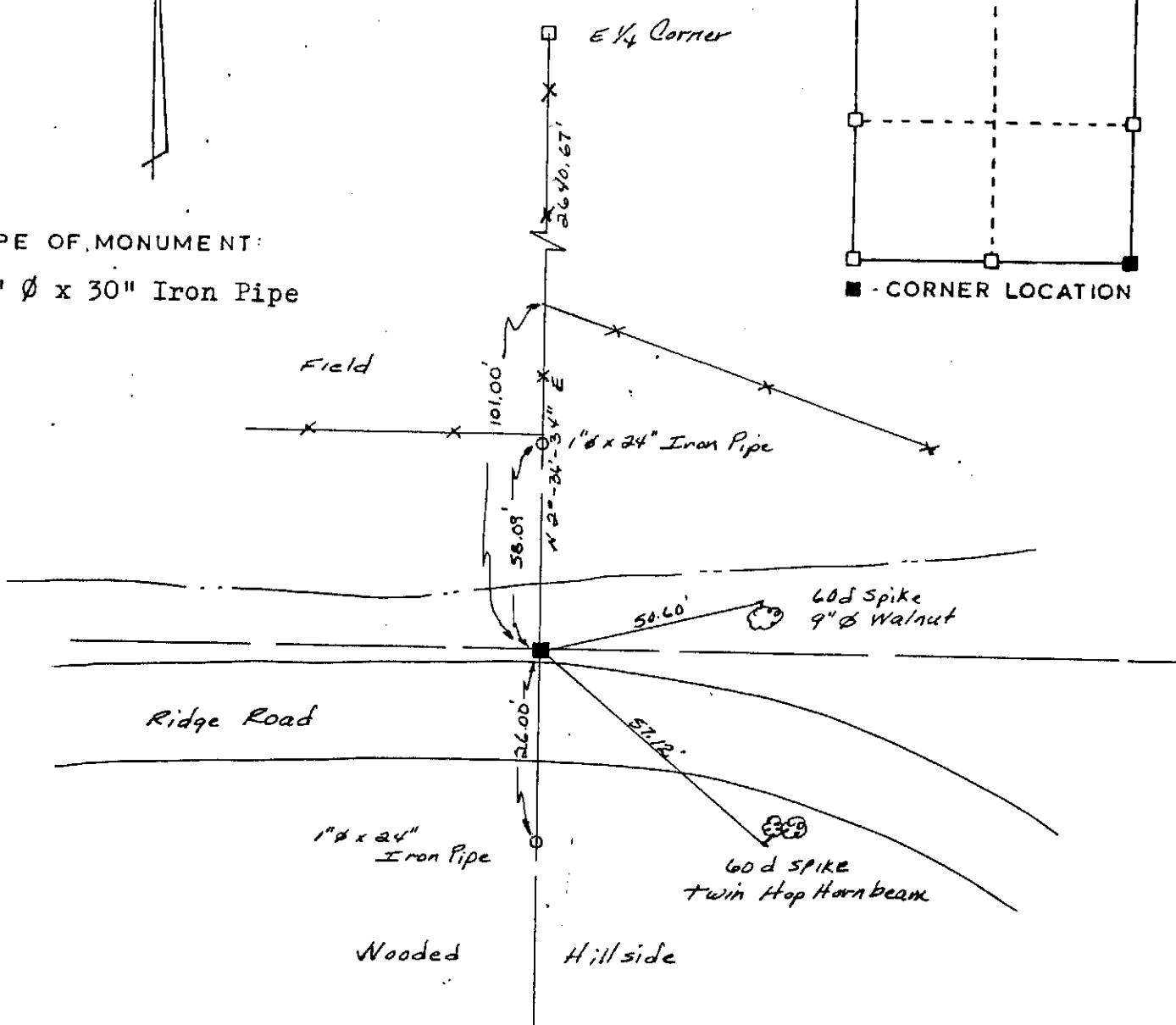


SKETCH OF CORNER REFERENCE TIES



TYPE OF MONUMENT:

2"  $\phi$  x 30" Iron Pipe

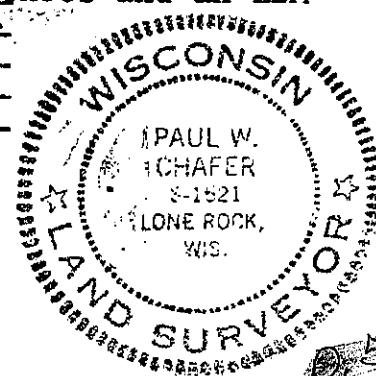


SURVEYOR'S CERTIFICATE  
STATE OF WISCONSIN)  
Grant County )

I HEREBY CERTIFY THAT I have monumented the above corner and taken the ties shown to perpetuate this location. No evidence of the corner remained, therefore, I used the intersection of the fences and an EDM traverse north fit very well with the original notes.

DATED THIS 25 DAY OF March 1986

Paul W. Chafer  
REGISTERED LAND SURVEYOR  
S- 1521



57