

RECORD OF CORNER MONUMENTATION

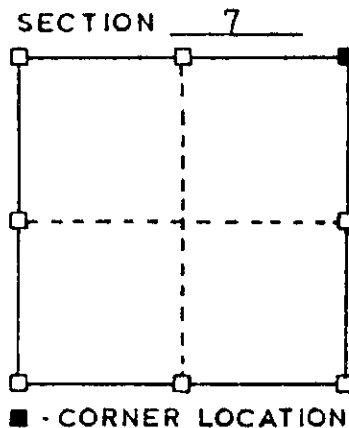
Northeast CORNER, SECTION 7 TOWNSHIP 7 N., RANGE 3 W
Grant COUNTY, WISCONSIN.

STATE PLANE COORDINATES OF _____
(Y) NORTH _____ ELEVATION _____
(X) EAST _____

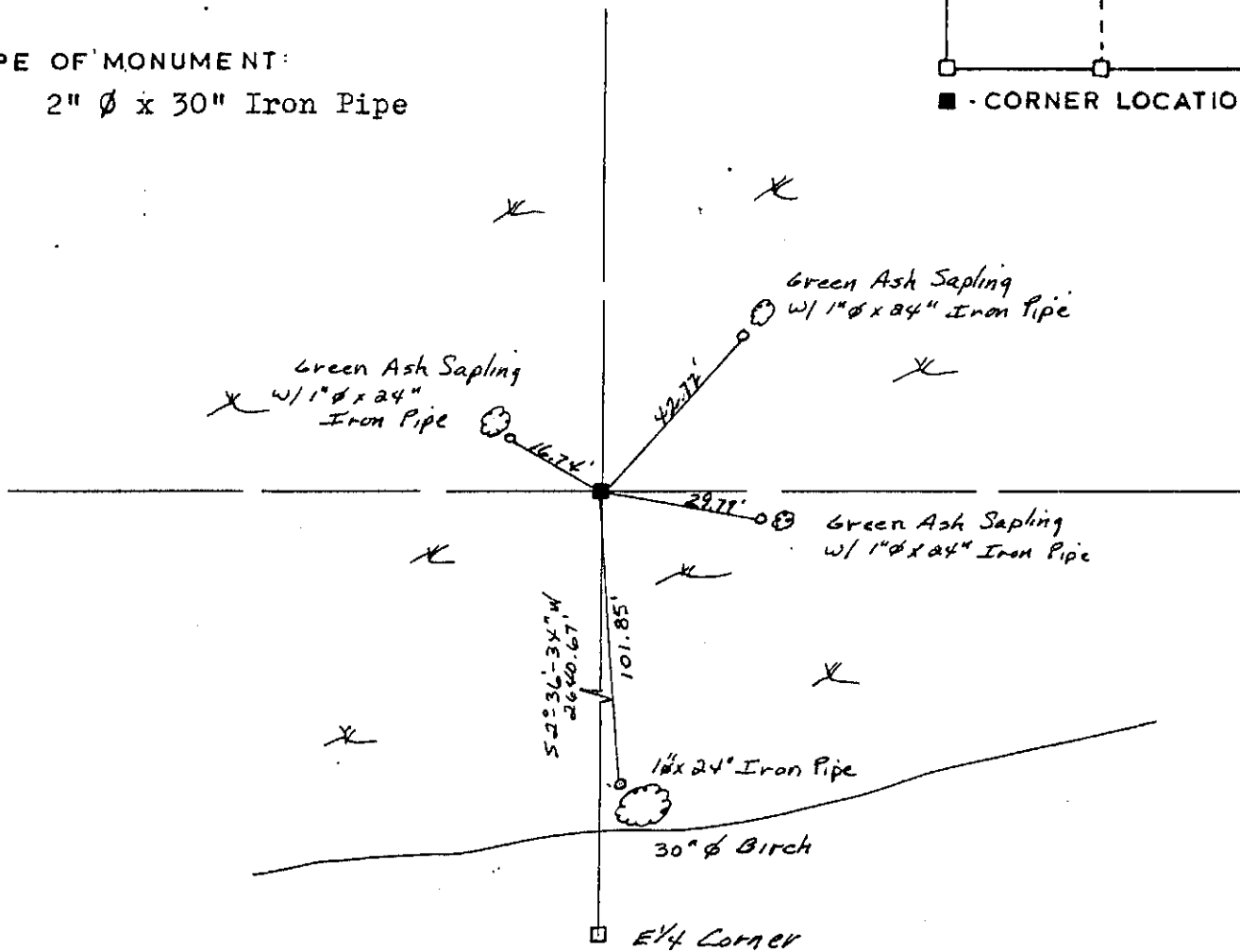
HORIZONTAL DATUM: WISCONSIN STATE PLANE COORDINATE SYSTEM, SOUTH ZONE



SKETCH OF CORNER REFERENCE TIES



TYPE OF MONUMENT:
2" ϕ x 30" Iron Pipe



SURVEYOR'S CERTIFICATE
STATE OF WISCONSIN)
Grant County)

I HEREBY CERTIFY THAT I have monumented the above corner as shown and placed the reference ties to perpetuate the location. An EDM traverse of the section fit very well with the original notes and a reference to the high bank fit the notes as described.

DATED THIS 25 DAY OF March 1986

Paul W. Chaper
REGISTERED LAND SURVEYOR
S- 1521

