

REC'D FEB 15 1997

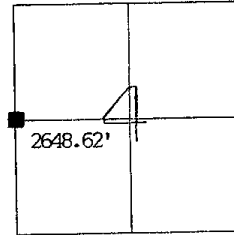
GRANT COUNTY U.S. PUBLIC LAND SURVEY MONUMENT RECORD

TYPE OF MONUMENT: 3/4" Iron Rod
TIES ARE AS INDICATED ON SKETCH

WITNESSES TO CORNER LOCATION

Sean M. Walsh

Christopher G. Reedy

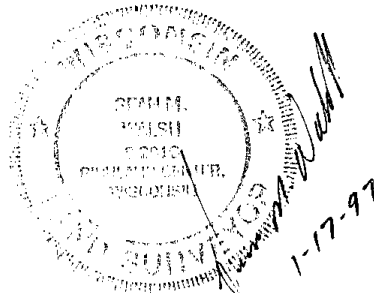


CORNER LOCATION
Section 4
T7N, R3W

BASIS FOR MONUMENT LOCATION

This corner was re-established by Matthew J. Janiak in 1984. I have accepted and perpetuated this corner as shown hereon.

This information is correct and true to the best of my knowledge and belief.

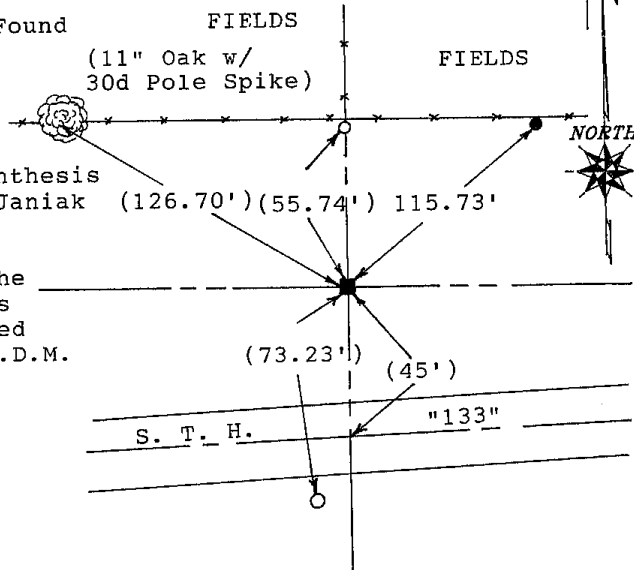


■ - 3/4" Iron Rod Found at Corner

O - 1" Iron Pipe Tie Found

● - 3/4" X 24" Iron Rod Set as Tie

TIE SKETCH



Distances in parenthesis were measured by Janiak (126.70') (55.74') 115.73' in 1984.

The distance to the tie placed by this survey was measured horizontally by E.D.M.

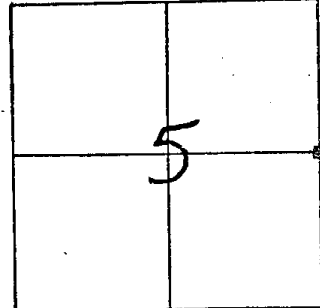
Marion Twp

U. S. PUBLIC LAND SURVEY MONUMENT RECORD
GRANT County, Wisconsin.

Basis for monument location.

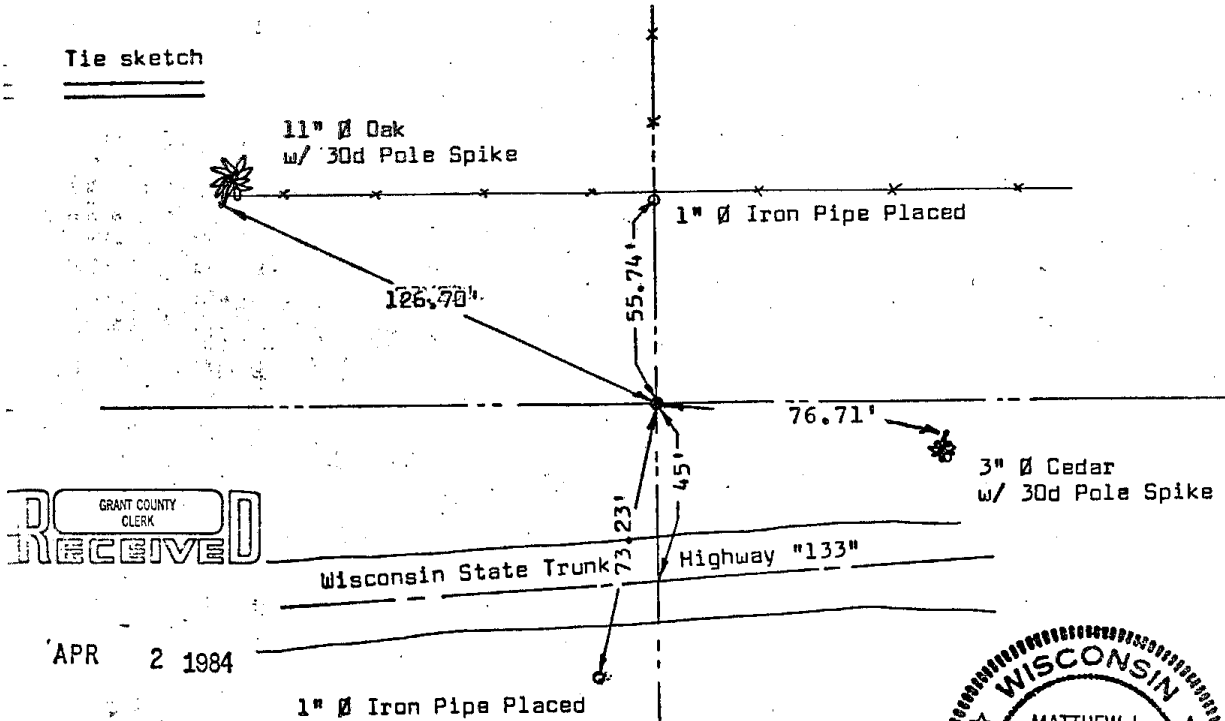
Section 5, T7N, R3W

Corner set from occupational evidence along with information contained on the Right of Way Plat of the Wisconsin Highway Commission dated October 1950, for then S.T.H. "132.



Corner Location
(Indicate by - □)

Tie sketch



I, Matthew J. Janiak Certify that the corner location shown hereon this record was determined by me or under my direction and control and that this U. S. Public Land Survey Monument Record is correct and complete to the best of my knowledge and belief.

3/12/84
Date

Matthew J. Janiak
Registered Land Surveyor



seal

p. 16