

U.S. PUBLIC LAND SURVEY MONUMENT RECORD - GRANT COUNTY, WI

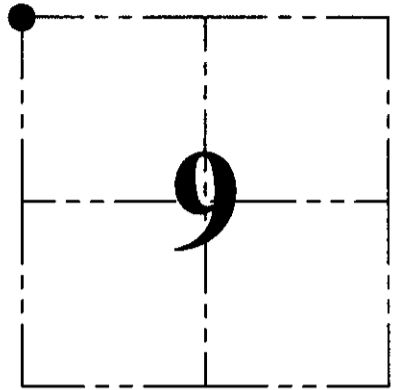
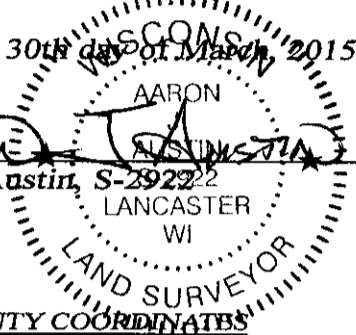
Section 9, Town 7 North Range 3 West, Town of Marion

CERTIFICATE:

I, Aaron J. Austin, Professional Wisconsin Land Surveyor, do hereby certify that the corner location on this record was determined by me and/or under my direct supervision and that this U.S. Public Land Survey Monument Record is correct and complete to the best of my knowledge and belief.

Dated this 30th day of March, 2015.

Aaron J. Austin
 Aaron J. Austin, S-29222
 LANCASTER
 WI



● = CORNER LOCATION

GRANT COUNTY COORDINATES

Northing: 617,286.51
 Easting: 809,537.04

HISTORY OF CORNER ESTABLISHMENT:

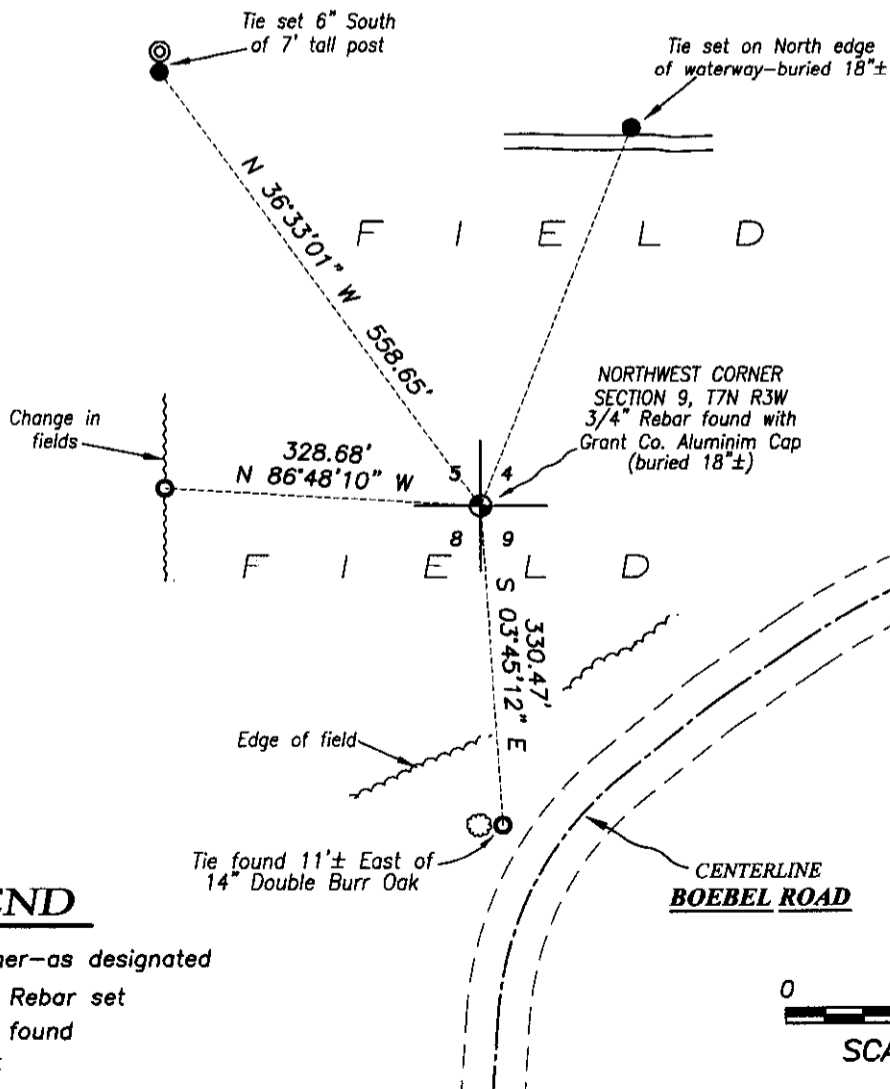
1833-Harvey Parke set original corner.
 2001-James Baker reset the corner and filed a U.S. Public Land Survey Monument Record for this corner.

DESCRIPTION OF CORNER EVIDENCE FOUND:

I found the corner reset by James Baker and two witness corners. The other two witness corners could not be recovered. I set two new witness corners and verified this location with G.P.S. and E.D.M. methods.

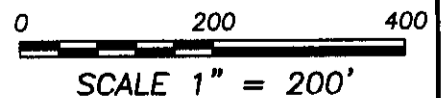
DESCRIPTION OF CORNER AND WITNESS MONUMENTS, references and accessories used to perpetuate the original or re-established location of this corner. Witnesses to corner location Shane Austin.

SKETCH:



LEGEND

- ⊕ Section Corner—as designated
- 1/2" x 12" Rebar set
- No. 6 rebar found
- ⊙ Existing Post



4211 HWY 81 E, LANCASTER, WI 53813
 PHONE: 608-723-6363 FAX: 608-723-6702

JOB NO: 15e010
 H:\CRD\14e032
 H:\TIE\T7NR3W\29

FIELDBOOK: TDSR
 DRAWN BY: AJ AUSTIN
 CREW: SW AUSTIN