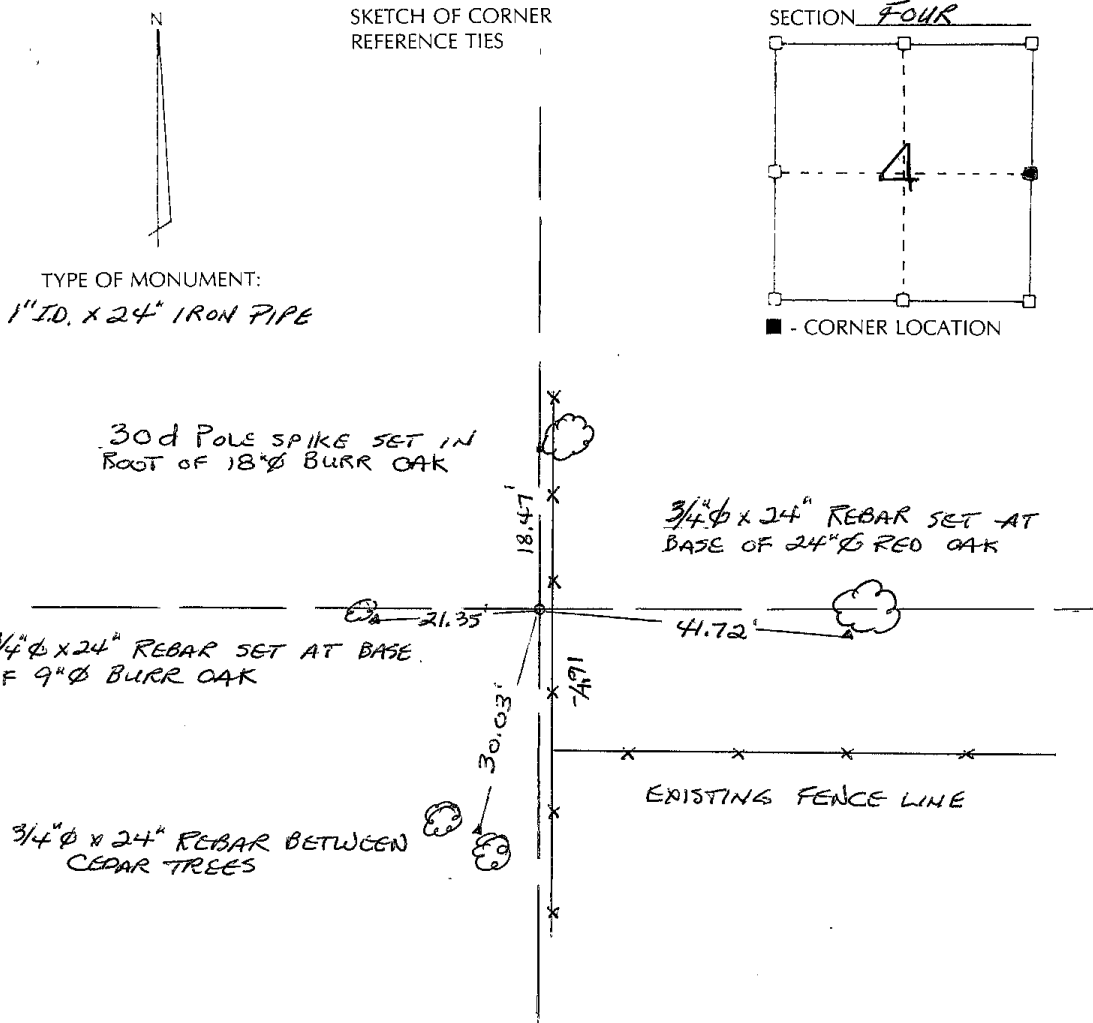


RECORD OF CORNER MONUMENTATION

E/4 CORNER SECTION 4 TOWNSHIP 7 N RANGE 3 WEST
GRANT COUNTY, WISCONSIN

STATE PLANE COORDINATES OF _____
 (Y) NORTH _____ ELEVATION _____
 (X) EAST _____

HORIZONTAL DATUM: WISCONSIN STATE PLANE COORDINATE SYSTEM, SOUTH ZONE



SURVEYOR'S CERTIFICATE
 (STATE OF WISCONSIN)

I HEREBY CERTIFY THAT DURING THE FALL OF 2002, WHILE PERFORMING A SURVEY FOR BERNIE MISCHER, WE DID THROUGH THE USE OF GPS AND TOTAL STATION TRAVERSE AND DIVIDE A PORTION OF SECTION 4. A LINE WAS RUN FROM THE NE CORNER THROUGH A STEEL BAR AT THE SE CORNER OF THE NE_{1/4}-NE_{1/4} AND INTERSECTED WITH DATA FROM THE SE CORNER AS WELL AS THE W_{1/4} CORNER. THIS LOCATION FIT VERY WELL WITH THE KNOWN DATA AND THEREFORE WAS MONUMENTED AND TIED AS SHOWN ABOVE.

DATED THIS 3rd DAY OF
February 2003.

TERRY L. CORNELL
 REGISTERED LAND SURVEYOR
 NO. 51905
 WI