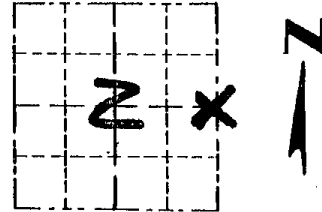


# GRANT COUNTY

## Survey Monument Record

CORNER NO. 19  
 SECTION 2  
 TOWN 7N  
 RANGE 3W

TYPE OF MONUMENT COUNTY MONUMENT RECORD  
 STATE PLANE COORDINATES: N \_\_\_\_\_  
 E \_\_\_\_\_  
 ELEVATION — M.S.L. DATUM: \_\_\_\_\_  
 THETA ANGLE: \_\_\_\_\_  
 FIELD BOOK: 95-15  
 PAGE \_\_\_\_\_



LOCATION  
(Indicated by "X")

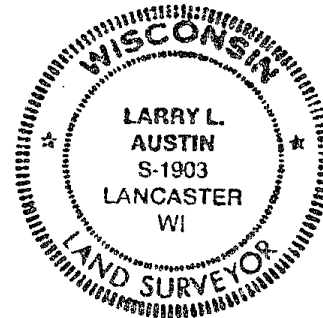
### BASIS FOR MONUMENT LOCATION

(Use reverse side if necessary)

ORIGINAL CORNER SET IN 1833 BY PARKE;

GRANT COUNTY MONUMENT SET IN A EAST-WEST FENCE FOR N-S LOCATION AND ON LINE BETWEEN THE NE COR + SE COR OF SEC. 2.

SEAL:



VERIFIED BY EDM TRAVERSE OF THE AREA

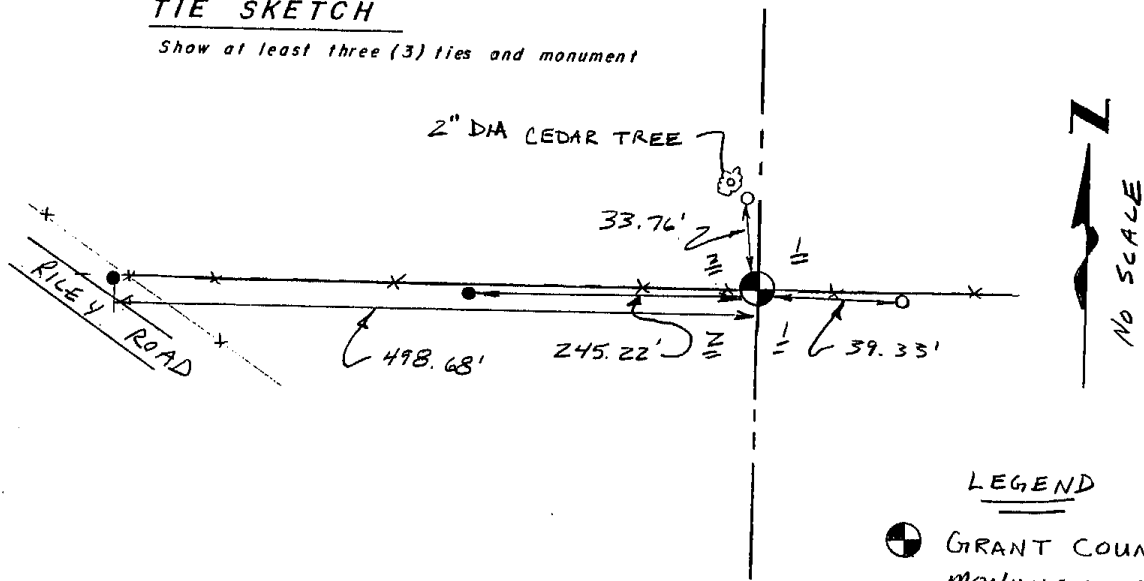
CERTIFIED CORRECT

*Larry L. Austin*  
 Registered Land Surveyor

DATE: 2-17-96

### TIE SKETCH

Show at least three (3) ties and monument



### LEGEND

- GRANT COUNTY MONUMENT SET
- 1" X 12" IRON PIPE SET
- 3/4" X 12" IRON BAR SET
- EXISTING FENCE