

U.S. PUBLIC LAND SURVEY MONUMENT RECORD

(AS REQUIRED BY s.A-E 7.08, WI. ADM. CODE)

HISTORY OF ORIGINAL CORNER ESTABLISHMENT AND SUBSEQUENT RESTORATIONS AND DESCRIPTION OF ANY RECORD, MONUMENT, OCCUPATION, TESTIMONIAL OR OTHER EVIDENCE CONSIDERED

THE CORNER WAS PREVIOUSLY WITNESSED & TIES BY BRUCE BOWDEN IN 8-2-83
 THE MONUMENT WAS REMOVED. A SIMILAR MONUMENT WAS FOUND EAST OF ITS RECORD
 LOCATION BASED ON TIES FOUND. I SET GRANT COUNTY MONUMENT BASED ON SW AND
 WEST TIES FOUND IN PLACE.

COORDINATES ARE ESTABLISHED TO THE CORNER AND WITNESS TIES AS SHOWN BELOW

BEARING REFERENCE AND COORDINATES ARE GRANT COUNTY COORDINATE SYSTEM
 NAD 83(91) ENGLISH SYSTEM N 593 787.71 E 861583.98

CORNER WAS: (CHECK ALL THAT APPLY)

- RESTORED THROUGH ACCEPTANCE OF AN OBLITERATED EVIDENCE LOCATION
- RESTORED THROUGH ACCEPTANCE OF A FOUND PERPETUATED LOCATION
 CONSIDERED A LOST CORNER AND REESTABLISHED THROUGH LOST CORNER PROPORTIONATE METHODS
 (INCLUDE A PLAN VIEW DRAWING SHOWING BEARING & DISTANCE TO OTHER PUBLIC LAND SURVEY CORNERS
- USED FOR PROPORTIONING AND DETERMINING THE CORNER LOCATION)
- RESTORED OR REESTABLISHED IN A LOCATION THAT DIFFERS FROM A PREVIOUS RESTORATION OR REESTABLISHMENT
 (INCLUDE A PLAN VIEW DRAWING AND INDICATE WHAT WAS SET AND/OR FOUND)

Describe the monument and accessories used to perpetuate the location of the corner. (include a plan view drawing and indicated what was set and/or found)

LEGEND:

- △ SET 3/4"φ REBAR TIE
- FOUND STONE MONUMENT
- ⊗ EX. SECTION COR. MONUMENT AS DESCRIBED
- SET 7/8"X24" REBAR WITH GRANT. CO. ALUM CAP
- () RECORDED AS
- ⊗ FD. RING SHANK NAIL
- X — FENCE
- ▲ FOUND 3/4" IRON PIPE

SECT <u>26</u>	SECT <u>25</u>
TOWN <u>7</u> N	TOWN <u>7</u> N
RANGE <u>2W</u>	RANGE <u>2W</u>
SECT <u>35</u>	SECT <u>36</u>
TOWN <u>7</u> N	TOWN <u>7</u> N ●
RANGE <u>2W</u>	RANGE <u>2W</u>

● = LOCATION OF CORNER
 THE W1/4 COR. OF SECT 31 T 7 N, R 1W
 THE E1/4 COR. OF SECT 36 T 7 N, R 2W
 THE ___ COR. OF SECT ___ T ___ N, R ___
 THE ___ COR. OF SECT ___ T ___ N, R ___

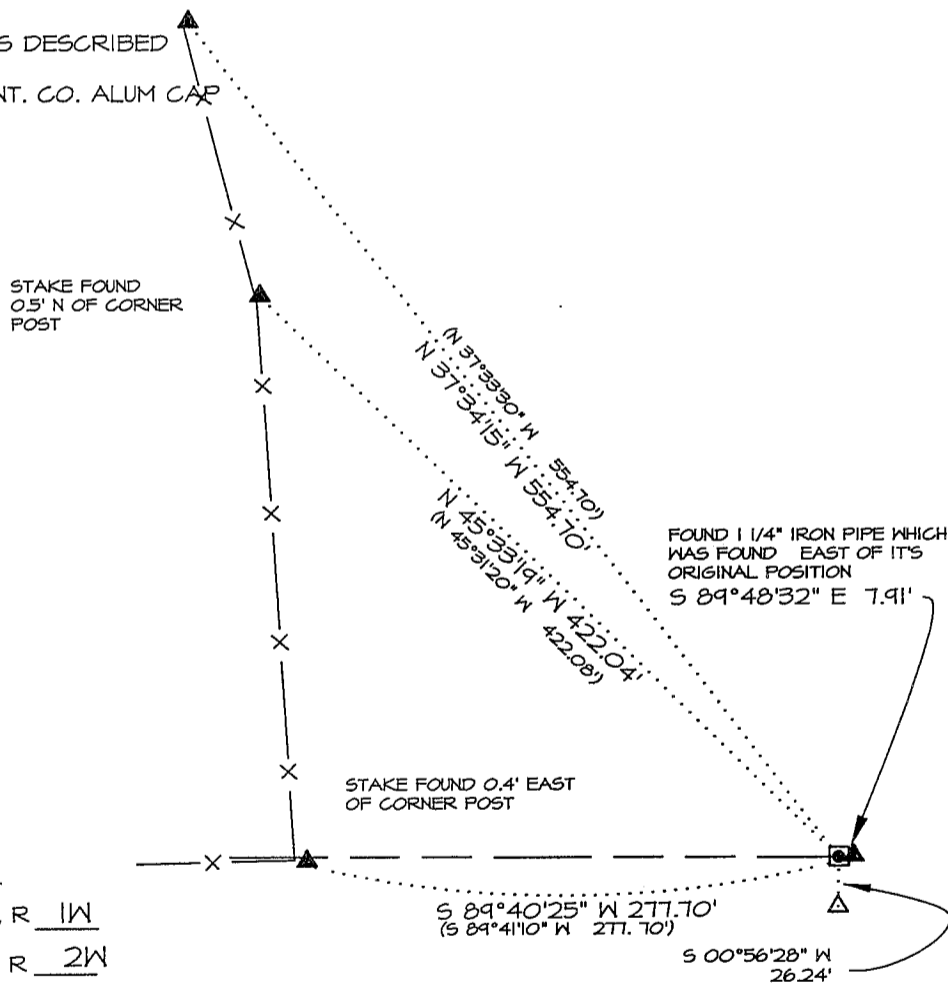
GRANT COUNTY, WISCONSIN
 JOB ID: 045-164 BOOK #: 2005-1 P.70

I, LAURENCE E SCHMIT CERTIFY THAT THE CORNER LOCATION SHOWN ON THIS RECORD WAS DETERMINED BY ME OR UNDER MY DIRECTION AND CONTROL AND THAT THIS U.S. PUBLIC LAND SURVEY MONUMENT RECORD IS CORRECT AND COMPLETE TO THE BEST OF MY KNOWLEDGE AND BELIEF.

Laurence E Schmit 6-14-05

SIGNATURE

DATE:



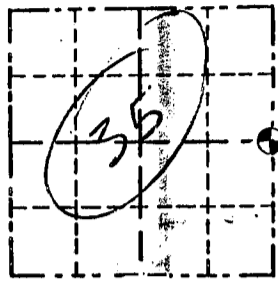
LAND SURVEYORS SEAL

INDEX NUMBER 170

COUNTY
Survey Monument Record

CORNER NO. 35
 SECTION 7
 TOWN 7 N
 RANGE 2 W

TYPE OF MONUMENT 1 1/2" x 24" pipe
 STATE PLANE COORDINATES: N _____
 E _____
 ELEVATION — M.S.L. DATUM: _____
 THETA ANGLE: _____
 FIELD BOOK: _____
 PAGE _____



LOCATION
 (Indicated by "X")

WEST 35?

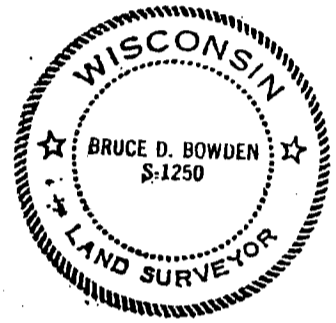
BASIS FOR MONUMENT LOCATION

(Use reverse side if necessary)

Show info such as: History of corner, with reference to Vol. and pg., dates, surveyor; exact description of monument replaced; if location computed, by taped or EDM traverse; landowner, remarks, etc.

Monument set from existing physical evidence and checked with single proportionate measurement.

SEAL:



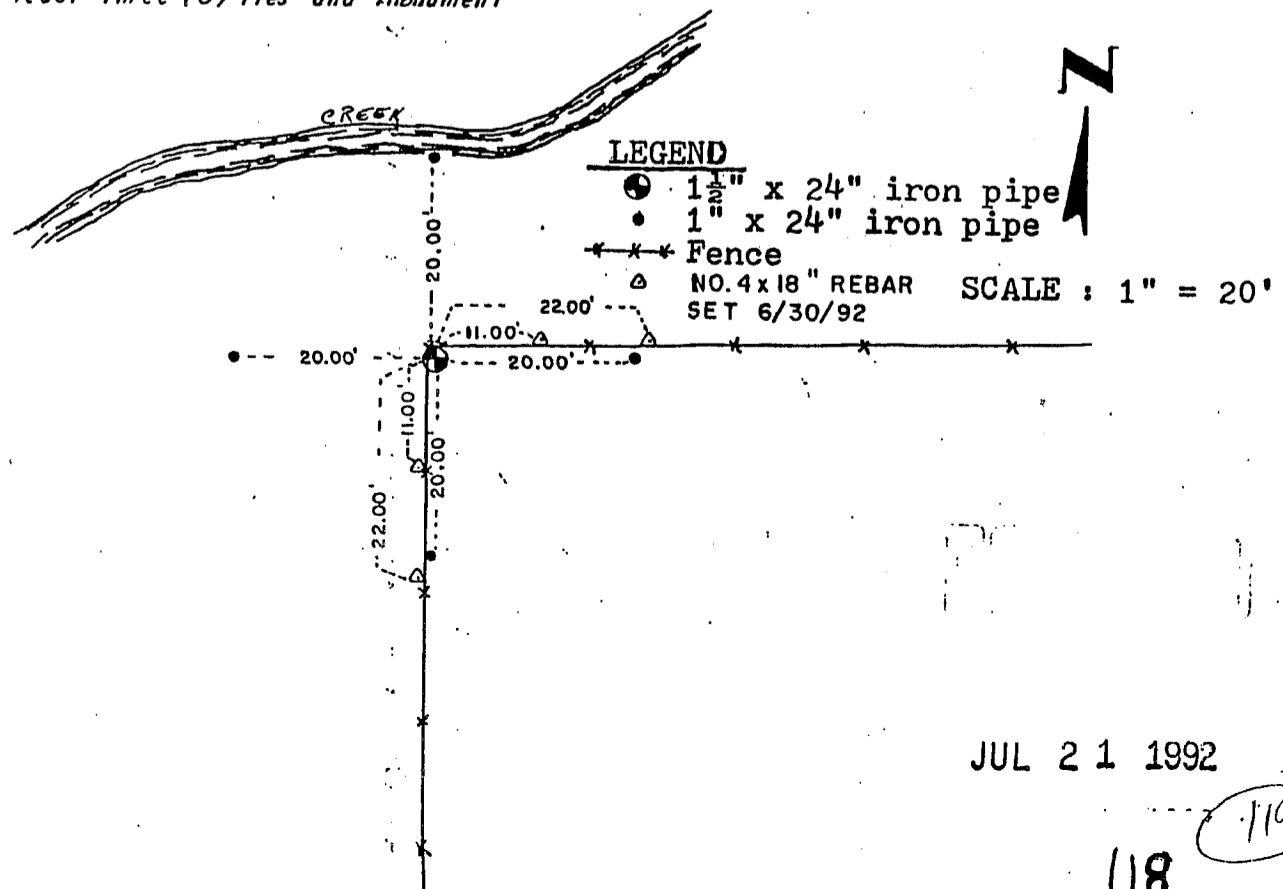
REVISED July 17, 1992 BDB
 CERTIFIED CORRECT

Bruce D. Bowden
 Registered Land Surveyor

DATE: August 3, 1983

FIELD SKETCH

Show at least three (3) ties and monument



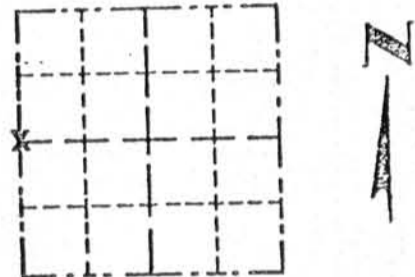
GRANT COUNTY

Survey Monument Record

Castle Rock Swp

CORNER NO. 114
 SECTION 31
 TOWN 7N
 RANGE 1W

TYPE OF MONUMENT 1" x 30" Iron Pipe
 STATE PLANE COORDINATES: N _____
 E _____
 ELEVATION — M.S.L. DATUM: _____
 THETA ANGLE: _____
 FIELD BOOK: _____
 PAGE: _____



LOCATION
(Indicated by "X")

BASIS FOR MONUMENT LOCATION

(Use reverse side if necessary)

Show info such as: History of corner, with reference to Vol. and pg., dates, surveyor; exact description of monument replaced; if location computed, by taped or EDM traverse; landowner, remarks, etc.

SEAL:

Pipe found as set by David D. Eisele for a survey from 1971.



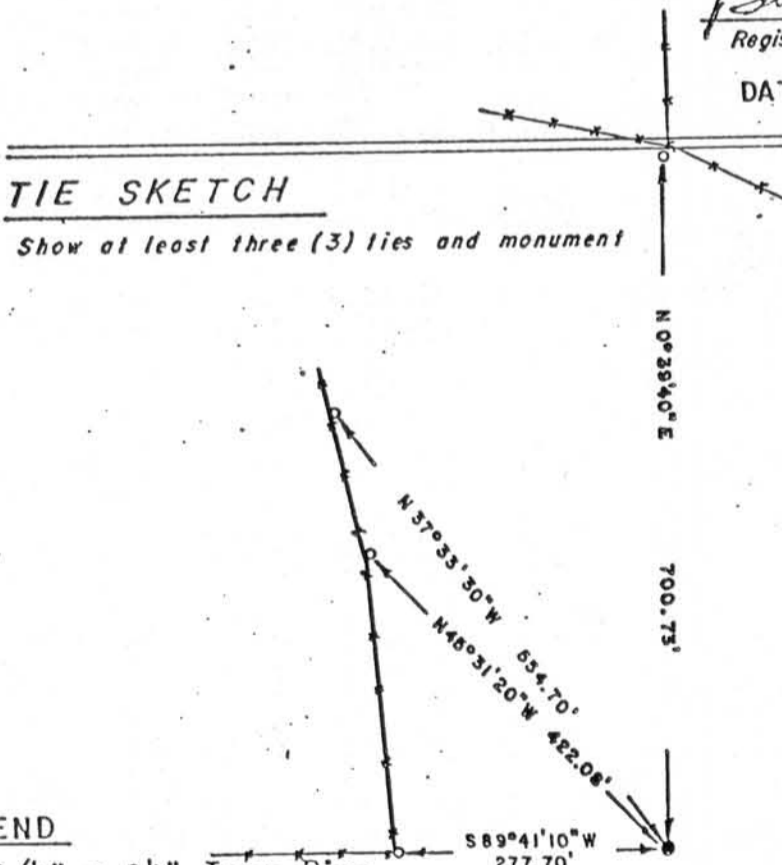
CERTIFIED CORRECT

Bruce D. Bowden
 Registered Land Surveyor

DATE: August 2, 1983

TIE SKETCH

Show at least three (3) ties and monument



SCALE: 1" = 200'

AUG 8 1983

LEGEND

- 3/4" x 24" Iron Pipe
- 1 1/4" x 30" Iron Pipe Found
- Fence

7-2
 120
 P-114

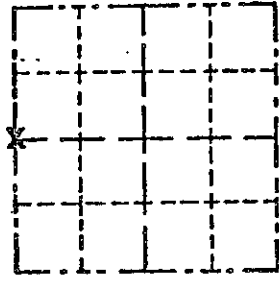
GRANT COUNTY

Survey Monument Record

Castle Rock Prof

CORNER NO. 114
 SECTION 31
 TOWN 7N
 RANGE 1W

TYPE OF MONUMENT 1" x 30" Iron Pipe
 STATE PLANE COORDINATES: N _____
 E _____
 ELEVATION — M.S.L. DATUM: _____
 THETA ANGLE: _____
 FIELD BOOK: _____
 PAGE _____



LOCATION
 (Indicated by "X")

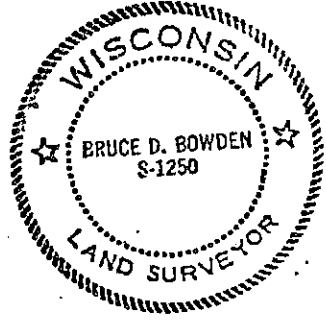
BASIS FOR MONUMENT LOCATION

(Use reverse side if necessary)

Show info such as: History of corner, with reference to Vol. and pg., dates, surveyor; exact description of monument replaced; if location computed, by taped or EDM traverse; landowner, remarks, etc.

Pipe found as set by David D. Eisele for a survey from 1971.

SEAL:



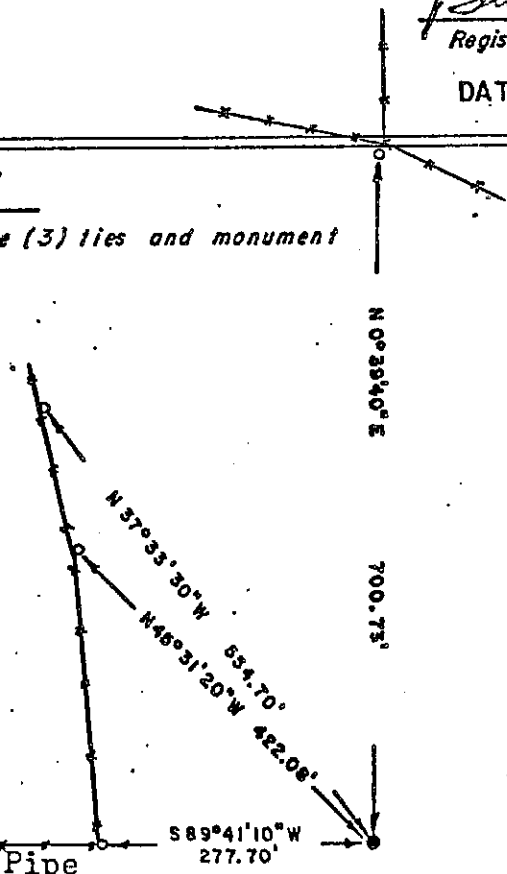
CERTIFIED CORRECT

Bruce D. Bowden
 Registered Land Surveyor

DATE: August 2, 1983

TIE SKETCH

Show at least three (3) ties and monument



SCALE: 1" = 200'

AUG 8 1983

LEGEND

- 3/4" x 24" Iron Pipe
- 1 1/2" x 30" Iron Pipe Found
- - - - - Fence