

U.S. PUBLIC LAND SURVEY MONUMENT RECORD - GRANT COUNTY, WI

Section 34, Town 7 North Range 2 West, Town of Hickory Grove

CERTIFICATE:

I, Aaron J. Austin, do hereby certify that the corner location on this record was determined by me and/or under my direct supervision and that this U.S. Public Land Survey Monument Record is correct and complete to the best of my knowledge and belief.

Dated this 11th day of April, 2012.

Aaron J. Austin
 Aaron J. Austin, S-2922



● = CORNER LOCATION

HISTORY OF CORNER ESTABLISHMENT:

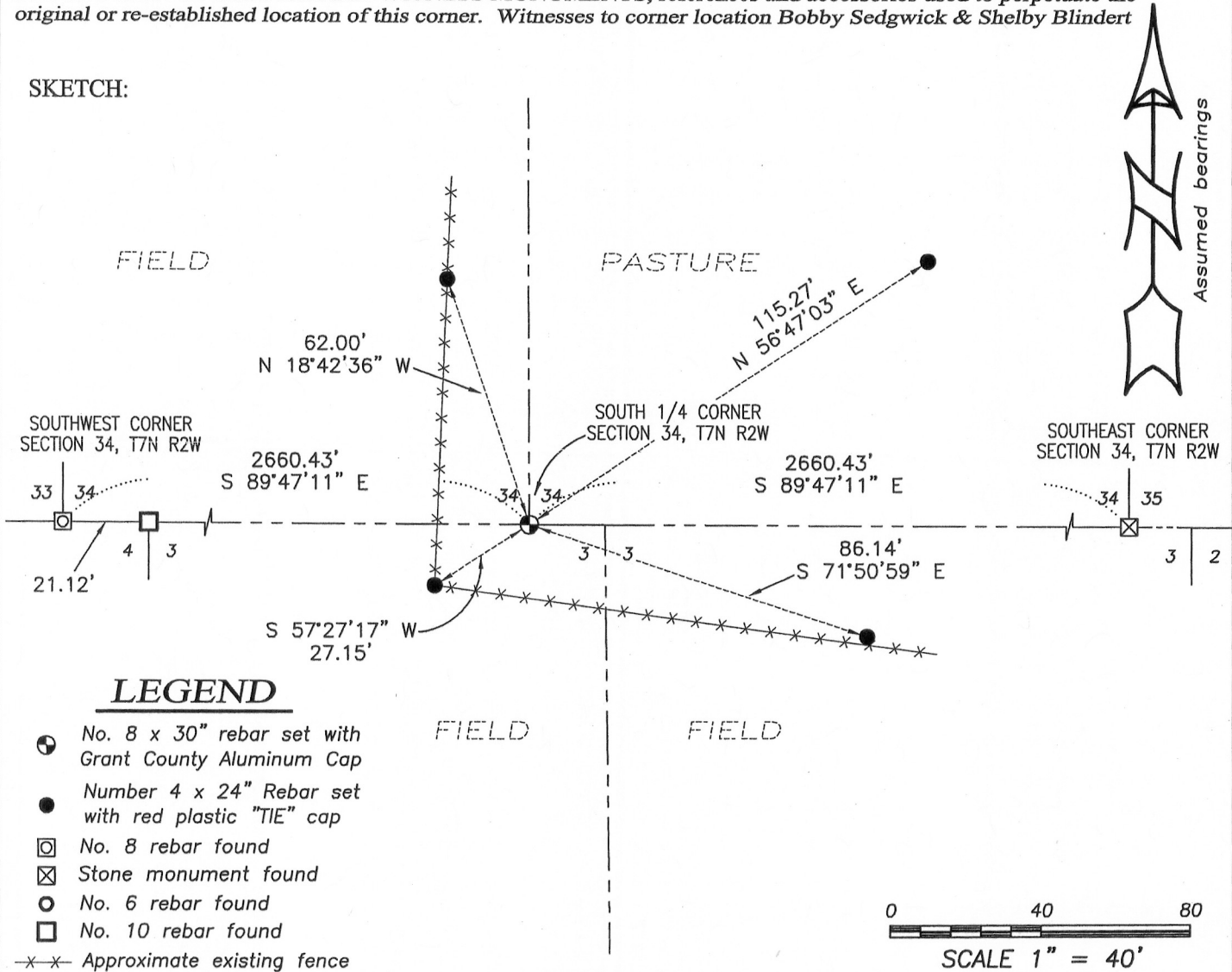
Corner originally set by Lucius Lyon in 1832.
 No other record of the corner was found.

DESCRIPTION OF CORNER EVIDENCE FOUND:

The existing fence appears to be a separation fence between pasture and fields and ownership is common on all sides of this corner. No evidence of the corner was found. I reset the corner online and equidistant from the Southwest corner of Section 34 and the Southeast corner of Section 34. I verified this location with E.D.M. and G.P.S. methods.

DESCRIPTION OF CORNER AND WITNESS MONUMENTS, references and accessories used to perpetuate the original or re-established location of this corner. Witnesses to corner location Bobby Sedgwick & Shelby Blindert

SKETCH:



LEGEND

- No. 8 x 30" rebar set with Grant County Aluminum Cap
- Number 4 x 24" Rebar set with red plastic "TIE" cap
- ⊠ No. 8 rebar found
- ⊞ Stone monument found
- No. 6 rebar found
- No. 10 rebar found
- x-x- Approximate existing fence



4211 HWY 81 E, LANCASTER, WI 53813
 PHONE: 608-723-6363 FAX: 608-723-6702

JOB NO: 11s256
 G:\T7NR2W\33
 H:\TIE\T7NR2W\126

FIELDBOOK: TDSR
 DRAWN BY: AJ AUSTIN
 CREW: BS-SB