

GRANT COUNTY CERTIFIED LAND CORNER

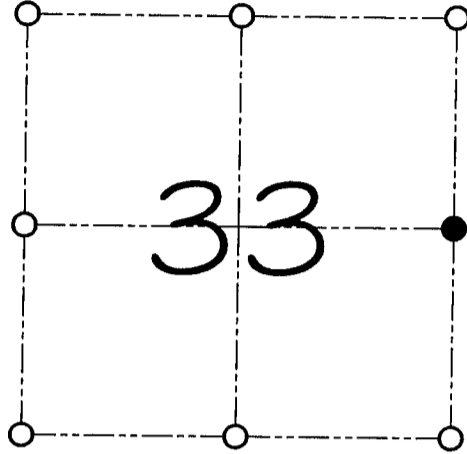
CORNER NUMBER 117

CERTIFICATE:

I, Larry L. Austin, do hereby certify that on the 14th day of January, 2000, I found evidence of the East 1/4 corner of Section 33, Town 7 North, Range 2 West, of the 4th Principal Meridian, and I re-established said corner according to the Wisconsin statutes as shown and described hereon.

Dated this 3rd day of February, 2000

Larry L. Austin
Larry L. Austin S-1903



● = CORNER LOCATION

**EAST 1/4 CORNER OF
SECTION 33, T 7 N R 2 W
TOWN OF HICKORY GROVE**

HISTORY OF ORIGINAL CORNER ESTABLISHMENT:

Corner was originally set in 1833 by Harvey Parke.
No other record of the corner was found.

DESCRIPTION OF CORNER EVIDENCE FOUND:

I found an existing stone and accepted it's location after an E.D.M. and G.P.S. traverse of the area.

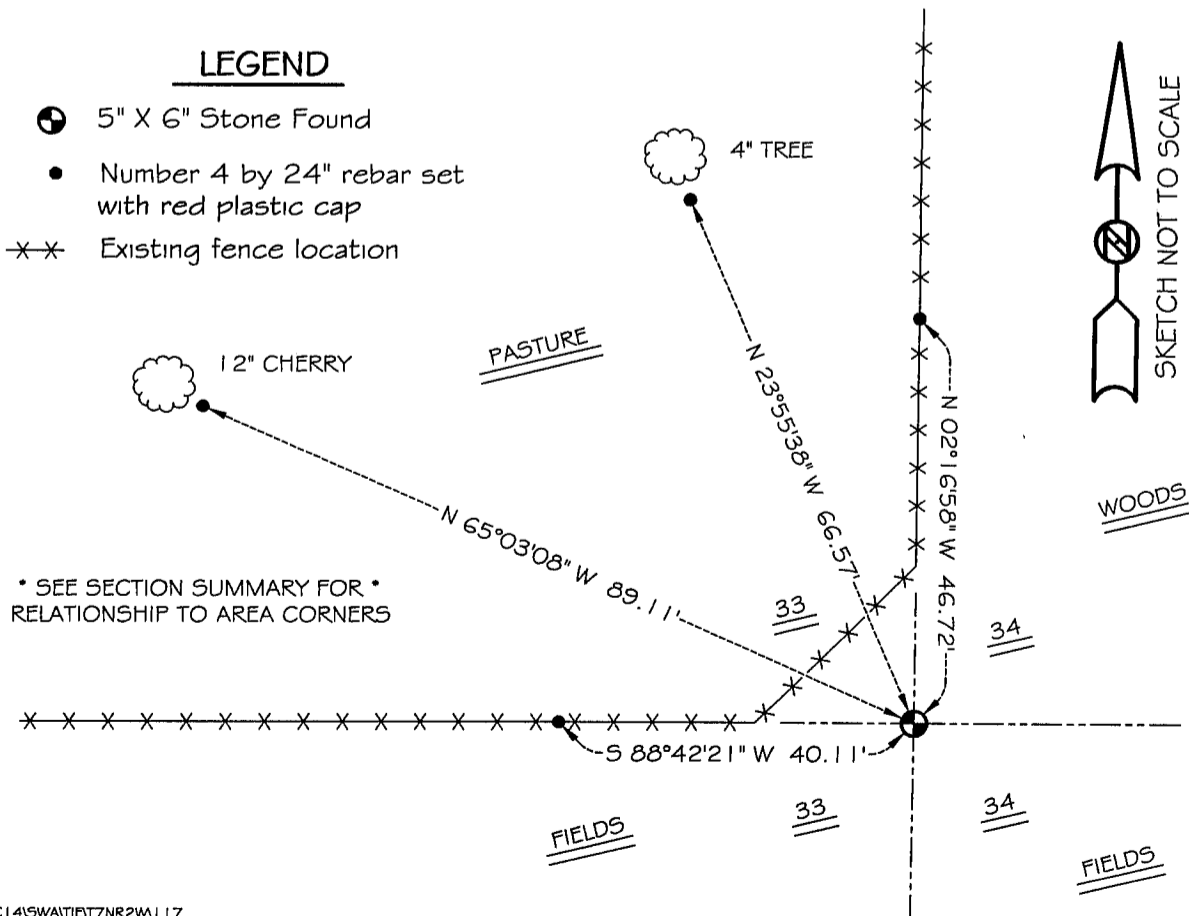
DESCRIPTION OF CORNER AND WITNESS MONUMENTS, references and accessories used to perpetuate the original or re-established location of this corner

WITNESS TO THE CORNER LOCATION: BOBBY SEDGWICK & SHELBY BLINDERT

SKETCH:

LEGEND

- 5" X 6" Stone Found
- Number 4 by 24" rebar set with red plastic cap
- ×× Existing fence location



* SEE SECTION SUMMARY FOR *
RELATIONSHIP TO AREA CORNERS