

GRANT COUNTY CERTIFIED LAND CORNER

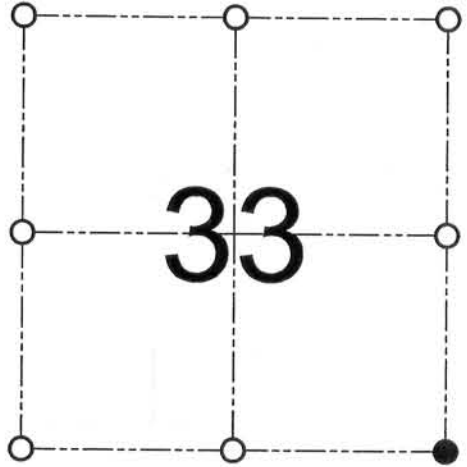
CORNER NUMBER 127

CERTIFICATE:

I, Larry L. Austin, do hereby certify that on the 22nd day of August, 2000, I found evidence of the Southeast corner of Section 33, Town 7 North, Range 2 West, of the 4th Principal Meridian, and I re-established said corner according to the Wisconsin statutes as shown and described hereon.

Dated this 2nd day of February, 2001

Larry L. Austin
Larry L. Austin S-1903



● = CORNER LOCATION

SOUTHEAST CORNER OF
SECTION 33, T 7 N R 2 W
TOWN OF HICKORY GROVE

SEAL

HISTORY OF ORIGINAL CORNER ESTABLISHMENT:

Corner was originally set in 1832 by Sibley.
In 1998 Mathew Reigel set a 1 1/4" Iron bar.

DESCRIPTION OF CORNER EVIDENCE FOUND:

I found the 1 1/4" Iron bar and accepted it's location to be the Northeast corner of Section 4, T6N R2W. I set the Southeast corner of Section 33 at the recorded offset.
Verified this location using EDM & GPS methods.

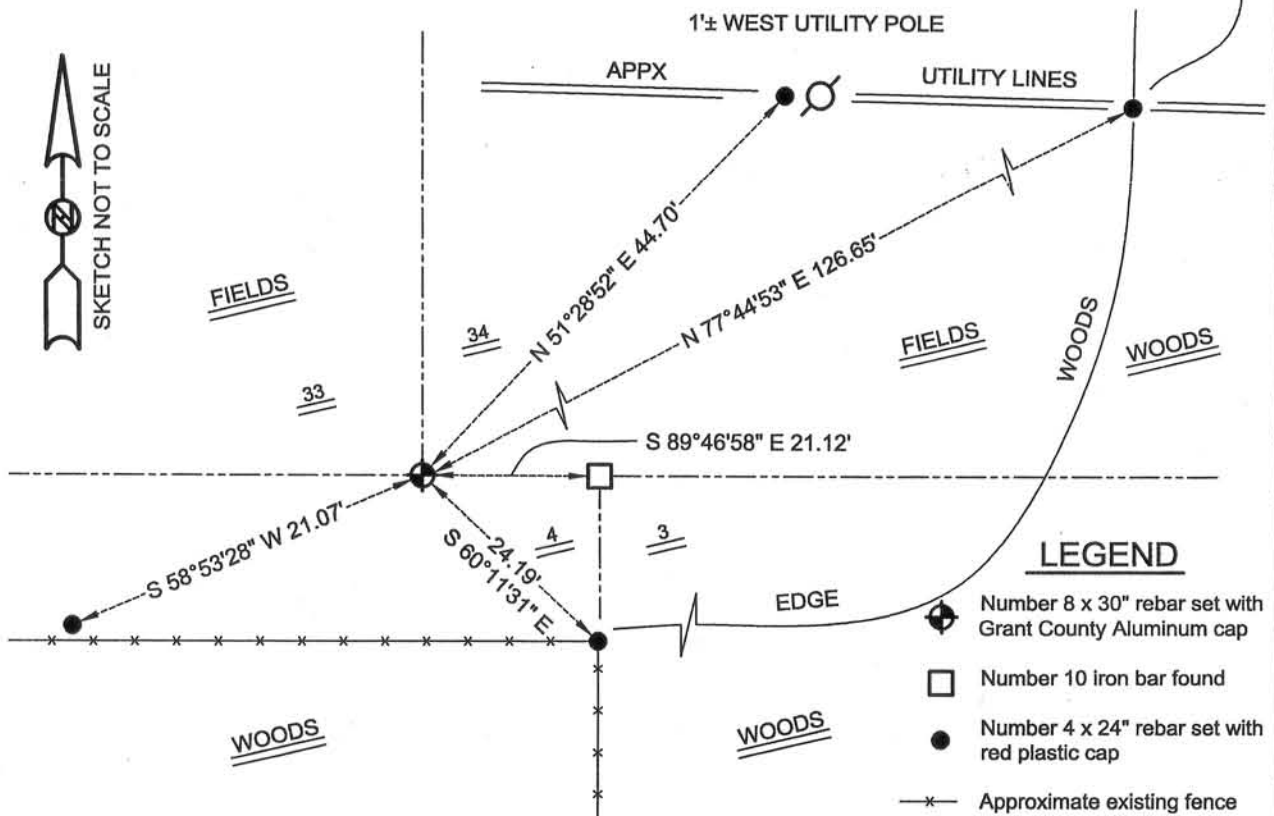
DESCRIPTION OF CORNER AND WITNESS MONUMENTS, references and accessories used to perpetuate the original or re-established location of this corner

WITNESS TO THE CORNER LOCATION: SHANE AUSTIN & JERRY SPEILMAN & BOBBY SEDGWICK

SKETCH:

* SEE SECTION SUMMARY FOR *
RELATIONSHIP TO AREA CORNERS

TIE IS AT EDGE OF FIELD
& UNDER OVERHEAD LINES



AUSTIN ENGINEERING, LLC
4211 HWY 81 E, LANCASTER, WI 53813
PHONE 608-723-6363 FAX 608-723-6702

FIELDBOOK: SDR33, 2022
G:\T7NR2W\33
C:\SC14\SWA\TIE\T7NR2W\127

DRAWN BY: SW AUSTIN
APPROVED: LL AUSTIN
CREW: BS - SB - SA - TF

APR 11 2012

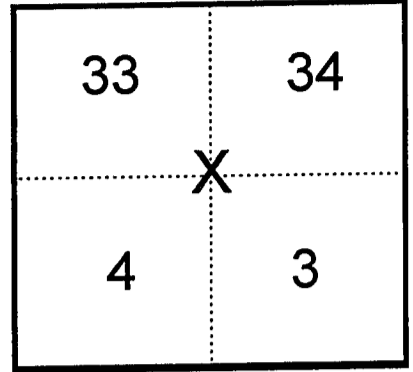
Note: This form is intended and designed to fulfill all requirements of Wisconsin Administrative Code, Chapter AE-7.08, U.S. Public Land Survey Monument Record (3)(a)(b)(c)(d)(e)(f)(g)(h)(i). Use additional sheets if necessary.

(a) The X Section, One Quarter corner common to Sections 3,4,33,34,

Township(s) 06,07 North, Range(s) 02 West.

State Plane Coordinates: N _____

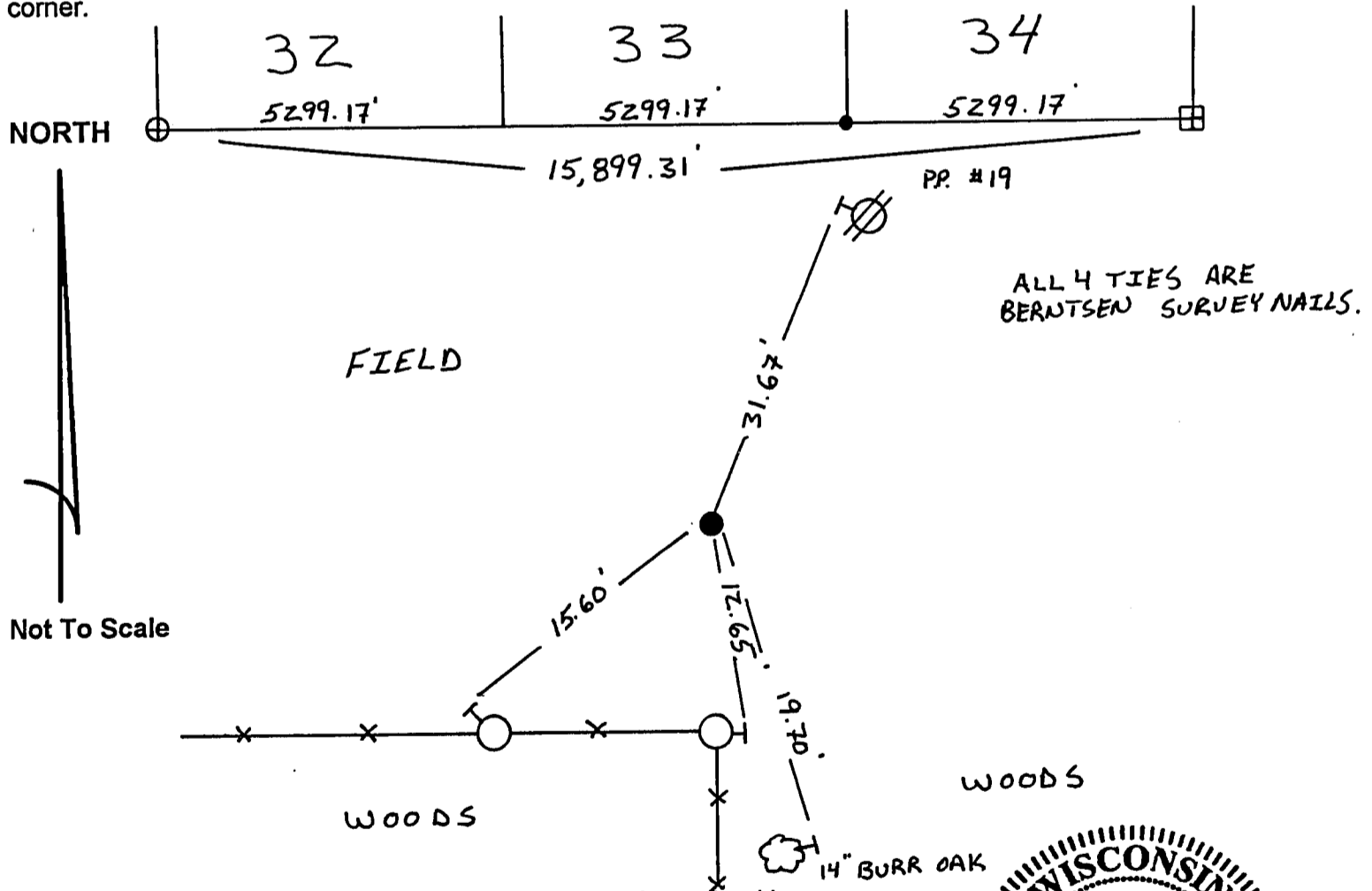
Datum: _____ E _____



(b)(f)(h) Description of monument found at this corner and if it was accepted, state all evidence (material, testimonial, occupational, plats records, other monuments) used as a basis for accepting. If not accepted or nothing was found, state evidence used as basis for establishing location and what was set. If re-established through lost corner proportionate methods, indicate all monuments, distances and directions used.

After extensive field research and testimony from the adjacent property owners the corner location was considered lost. I then prorated on a straight line between the SE of Section 34, a limestone monument, and the SW of Section 32, a 2" Iron Pipe. The corner location fits a fenceline to the south and falls in an area where property owners said they remembered there being a stone but was disturbed and then removed during tree clearing. I set a 1 1/4" Rebar.

(c)(d)(e) Plan view of corner with ties to at least four (4) witness monuments. If in disagreement with previously established corner, show the distances between the two corners and also indicate ties to disputed corner.



(I) Certify that the corner location on this record was determined by me or under my direction and control and that this U.S. Public Land survey Monument Record is correct and complete to the best of my knowledge and belief.

Math D. Reigel Signature 12/15/98 Date



Filed for record in Grant County Surveyor's Office on _____ INDEX NO. _____

FOR GRANT COUNTY, WISCONSIN

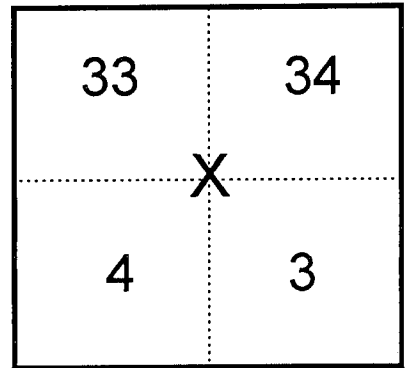
Note: This form is intended and designed to fulfill all requirements of Wisconsin Administrative Code, Chapter AE-7.08, U.S. Public Land Survey Monument Record (3)(a)(b)(c)(d)(e)(f)(g)(h)(i). Use additional sheets if necessary.

(a) The X Section, One Quarter corner common to Sections 3,4,33,34,

Township(s) 06,07 North, Range(s) 02 West.

State Plane Coordinates: N _____

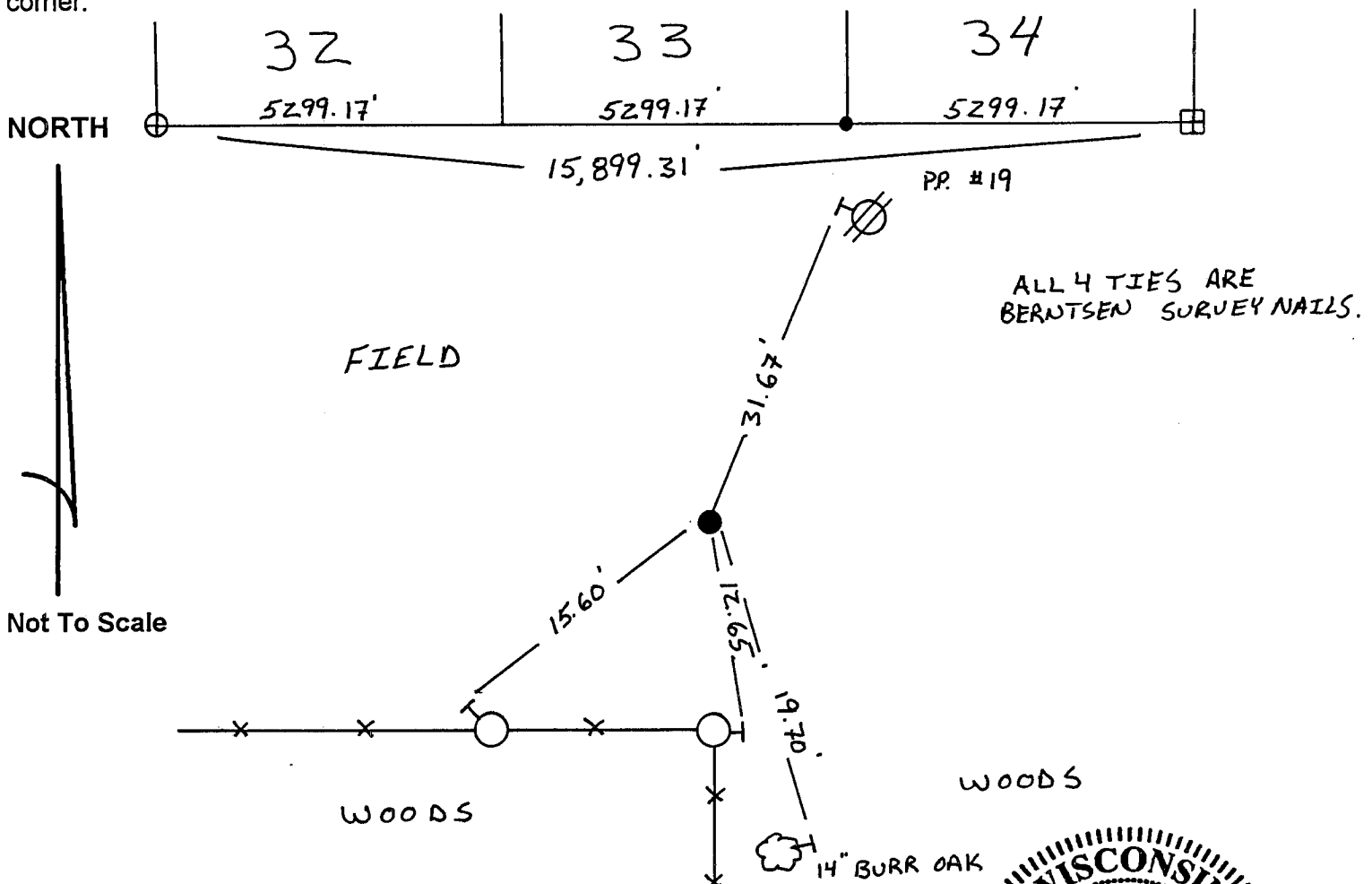
Datum: _____ E _____



(b)(f)(h) Description of monument found at this corner and if it was accepted, state all evidence (material, testimonial, occupational, plats records, other monuments) used as a basis for accepting. If not accepted or nothing was found, state evidence used as basis for establishing location and what was set. If re-established through lost corner proportionate methods, indicate all monuments, distances and directions used.

After extensive field research and testimony from the adjacent property owners the corner location was considered lost. I then prorated on a straight line between the SE of Section 34, a limestone monument, and the SW of Section 32, a 2" Iron Pipe. The corner location fits a fenceline to the south and falls in an area where property owners said they remembered there being a stone but was disturbed and then removed during tree clearing. I set a 1 1/4" Rebar.

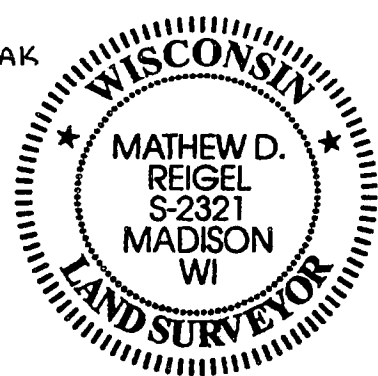
(c)(d)(e) Plan view of corner with ties to at least four (4) witness monuments. If in disagreement with previously established corner, show the distances between the two corners and also indicate ties to disputed corner.



Not To Scale

ALL 4 TIES ARE BERNTSEN SURVEY NAILS.

(I) Certify that the corner location on this record was determined by me or under my direction and control and that this U.S. Public Land survey Monument Record is correct and complete to the best of my knowledge and belief.



Math D. Reigel Signature 12/15/98 Date

Filed for record in Grant County Surveyor's Office on _____ INDEX NO. _____