

GRANT COUNTY CERTIFIED LAND CORNER

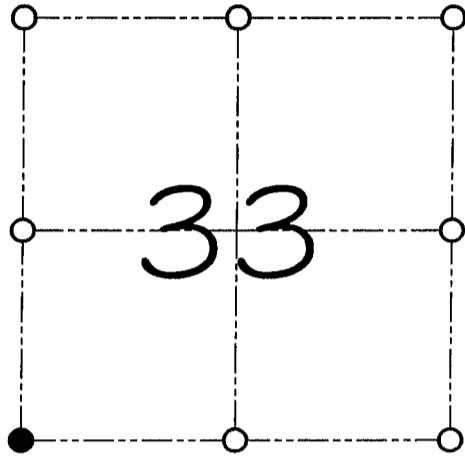
CORNER NUMBER 129

CERTIFICATE:

I, Larry L. Austin, do hereby certify that on the 14th day of January, 2000, I found no evidence of the Southwest corner of Section 33, Town 7 North, Range 2 West, of the 4th Principal Meridian, and I re-established said corner according to the Wisconsin statutes as shown and described hereon.

Dated this 3rd day of February, 2000

Larry L. Austin
Larry L. Austin S-1903



● = CORNER LOCATION

**SOUTHWEST CORNER OF
SECTION 33, T 7 N R 2 W
TOWN OF HICKORY GROVE**

HISTORY OF ORIGINAL CORNER ESTABLISHMENT:

Corner was originally set in 1832 by Sibley.
No other record of the corner was found.

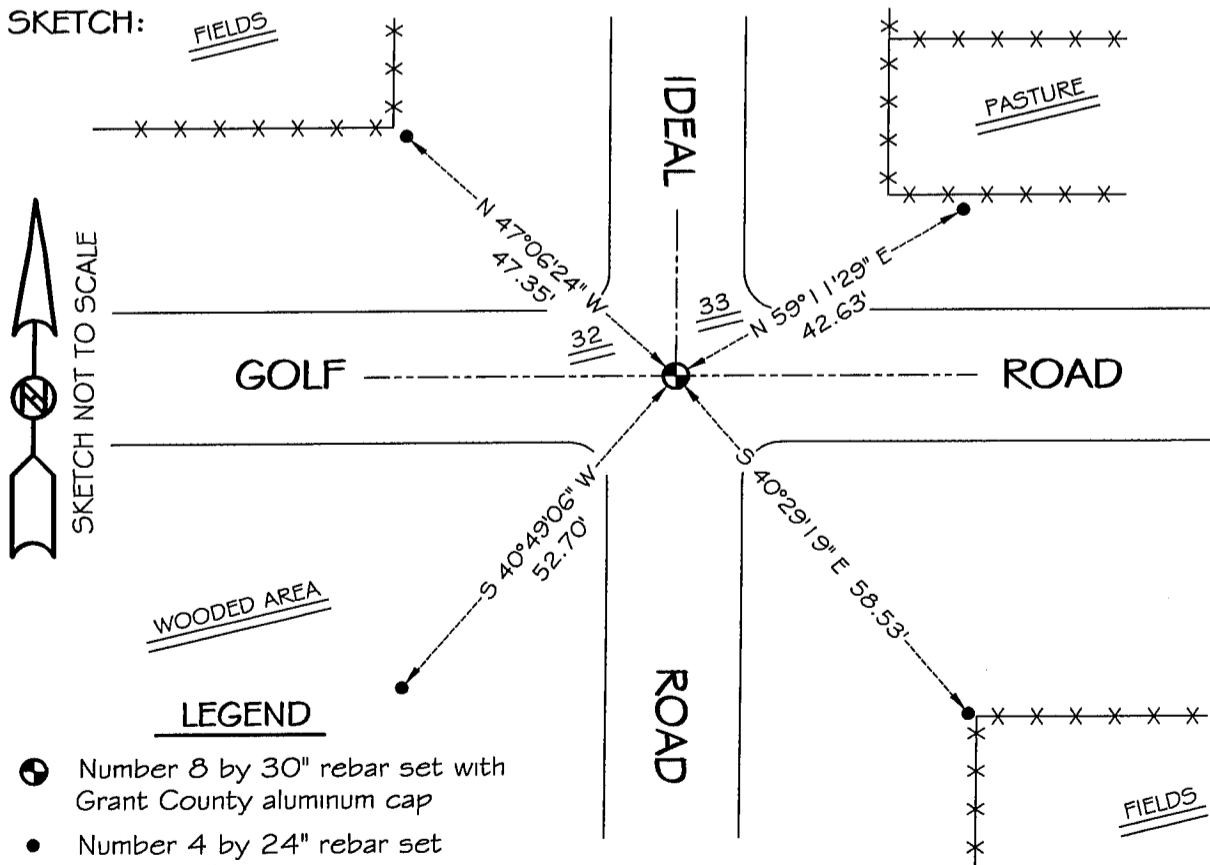
DESCRIPTION OF CORNER EVIDENCE FOUND:

I found no evidence to the location of the corner. I reset the corner based of evidence of the German cemetery for Northing. I proportioned the Easting between the Southwest corner of Section 32 and the South 1/4 corner of Section 33. Verified this location using E.D.M. and G.P.S. methods.

DESCRIPTION OF CORNER AND WITNESS MONUMENTS, references and accessories used to perpetuate the original or re-established location of this corner

WITNESS TO THE CORNER LOCATION: SHELBY BLINDERT & BRIAN WINKERS

SKETCH:



LEGEND

- Number 8 by 30" rebar set with Grant County aluminum cap
- Number 4 by 24" rebar set with red plastic cap
- x-x Existing fence location

* SEE SECTION SUMMARY FOR *
RELATIONSHIP TO AREA CORNERS