

# GRANT COUNTY CERTIFIED LAND CORNER

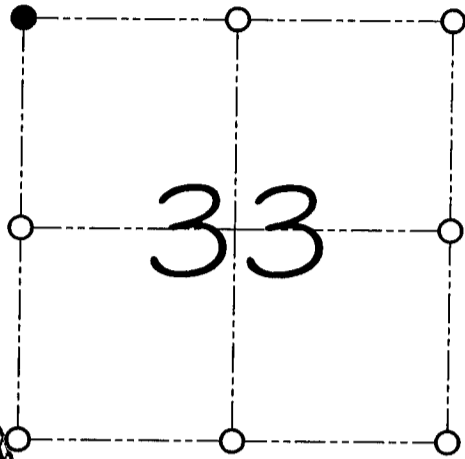
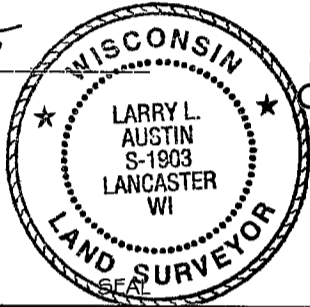
CORNER NUMBER 109

**CERTIFICATE:**

I, Larry L. Austin, do hereby certify that on the 14th day of January, 2000, I found evidence of the Northwest corner of Section 33, Town 7 North, Range 2 West, of the 4th Principal Meridian, and I re-established said corner according to the Wisconsin statutes as shown and described hereon.

Dated this 3rd day of February, 2000

*Larry L. Austin*  
Larry L. Austin S-1903



● = CORNER LOCATION

**NORTHWEST CORNER OF  
SECTION 33, T 7 N R 2 W  
TOWN OF HICKORY GROVE**

**HISTORY OF ORIGINAL CORNER ESTABLISHMENT:**

Corner was originally set in 1832 by Sibley. Larry Schmit found a 3/4" iron rod in 1994 and accepted it as the corner.

**DESCRIPTION OF CORNER EVIDENCE FOUND:**

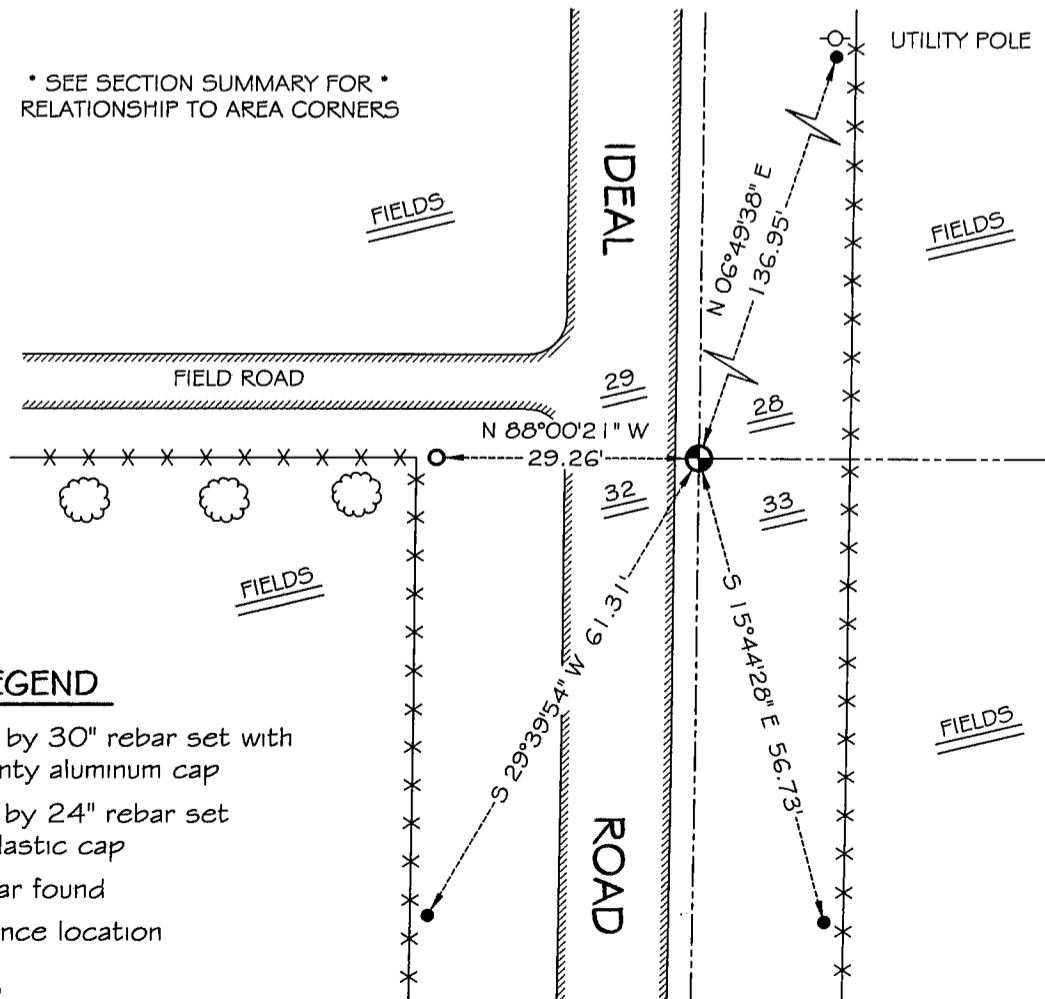
I found the 3/4" iron bar and did not accept it's location. I re-established the corner location based on proportioning between the occupied North 1/4 of Section 32 and the monumented North 1/4 of Section 33. I held the 3/4" iron bar and fence West for Northing. Verified this location using E.D.M. and G.P.S. methods.

**DESCRIPTION OF CORNER AND WITNESS MONUMENTS, references and accessories used to perpetuate the original or re-established location of this corner**

WITNESS TO THE CORNER LOCATION: SHELBY BLINDERT & BRIAN WINKERS

**SKETCH:**

\* SEE SECTION SUMMARY FOR \*  
RELATIONSHIP TO AREA CORNERS



**LEGEND**

- Number 8 by 30" rebar set with Grant County aluminum cap
- Number 4 by 24" rebar set with red plastic cap
- No. 6 rebar found
- x-x Existing fence location