

U.S. PUBLIC LAND SURVEY MONUMENT RECORD - GRANT COUNTY, WI

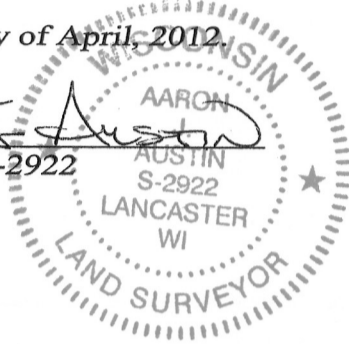
Section 27, Town 7 North Range 2 West, Town of Hickory Grove

CERTIFICATE:

I, Aaron J. Austin, do hereby certify that the corner location on this record was determined by me and/or under my direct supervision and that this U.S. Public Land Survey Monument Record is correct and complete to the best of my knowledge and belief.

Dated this 11th day of April, 2012

Aaron J. Austin
 Aaron J. Austin, S-2922



● = CORNER LOCATION

HISTORY OF CORNER ESTABLISHMENT:

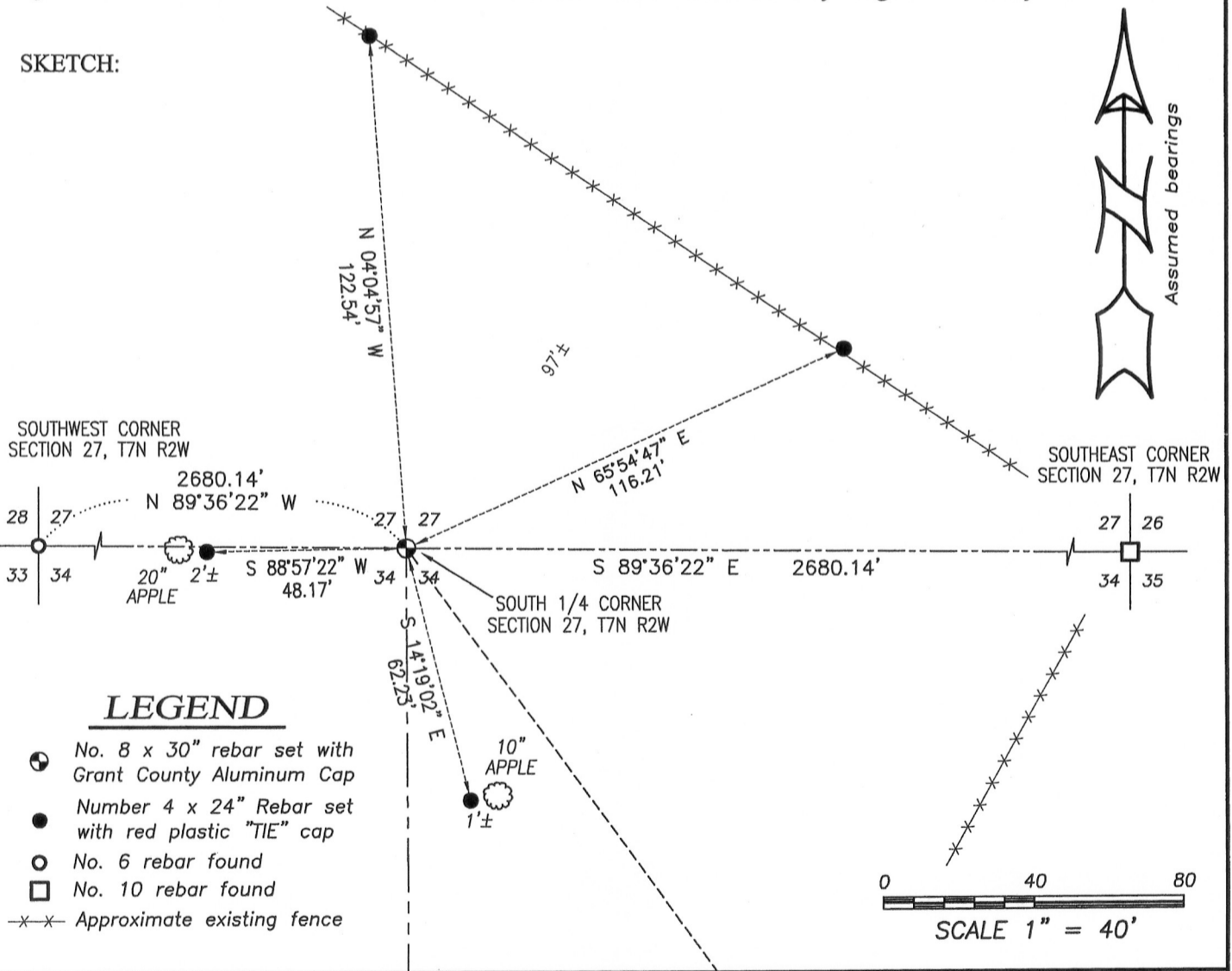
Corner originally set by Harvey Parke in 1833.
 No other record of the corner was found.

DESCRIPTION OF CORNER EVIDENCE FOUND:

No evidence of the corner was found. I reset the corner online and equidistant from the Southwest corner of Section 27 and the Southeast corner of Section 27. I verified this location with E.D.M. and G.P.S. methods.

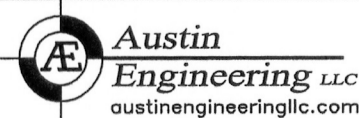
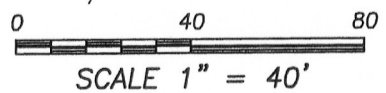
DESCRIPTION OF CORNER AND WITNESS MONUMENTS, references and accessories used to perpetuate the original or re-established location of this corner. Witnesses to corner location Bobby Sedgwick & Shelby Blindert

SKETCH:



LEGEND

- No. 8 x 30" rebar set with Grant County Aluminum Cap
- Number 4 x 24" Rebar set with red plastic "TIE" cap
- No. 6 rebar found
- No. 10 rebar found
- x-x- Approximate existing fence



Austin Engineering LLC
 austinengineeringllc.com

4211 HWY 81 E, LANCASTER, WI 53813
 PHONE: 608-723-6363 FAX: 608-723-6702

JOB NO: 11s256
 G:\T7NR2W\33
 H:\TIE\T7NR2W\106

FIELDBOOK: TDSR
 DRAWN BY: AJ AUSTIN
 CREW: BS-SB