

U.S. PUBLIC LAND SURVEY MONUMENT RECORD

(AS REQUIRED BY s.A-E 7.08, WI. ADM. CODE)

HISTORY OF ORIGINAL CORNER ESTABLISHMENT AND SUBSEQUENT RESTORATIONS AND DESCRIPTION OF ANY RECORD, MONUMENT, OCCUPATION, TESTIMONIAL OR OTHER EVIDENCE CONSIDERED

THE CORNER WAS PREVIOUSLY SET BY BRUCE BOWDEN. TIE SHEET 11-29-96
 THE MONUMENT WAS NOT FOUND BUT SOME OF THE TIES WERE FOUND & GRANT CO. COORDINATES WERE ATTACHED TO CORNER. I SET THE MONUMENT AT ITS RECORDED COORDINATES

COORDINATES ARE ESTABLISHED TO THE CORNER AND WITNESS TIES AS SHOWN BELOW

BEARING REFERENCE AND COORDINATES ARE GRANT COUNTY COORDINATE SYSTEM
 NAD 83(91) ENGLISH SYSTEM NORTH 595913.8 EASTING 854705.16

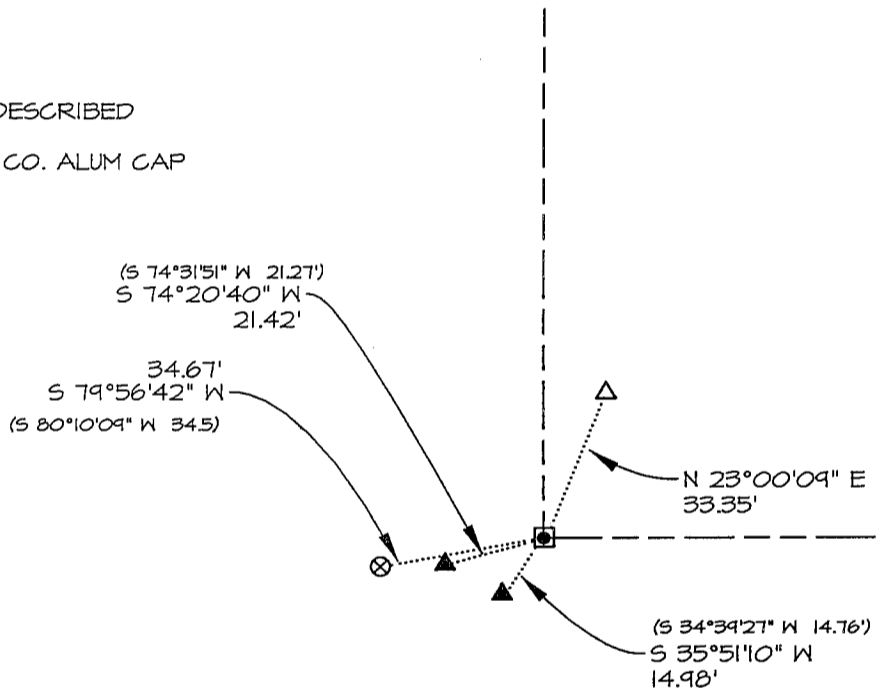
CORNER WAS: (CHECK ALL THAT APPLY)

- RESTORED THROUGH ACCEPTANCE OF AN OBLITERATED EVIDENCE LOCATION
- RESTORED THROUGH ACCEPTANCE OF A FOUND PERPETUATED LOCATION
 CONSIDERED A LOST CORNER AND REESTABLISHED THROUGH LOST CORNER PROPORTIONATE METHODS
 (INCLUDE A PLAN VIEW DRAWING SHOWING BEARING & DISTANCE TO OTHER PUBLIC LAND SURVEY CORNERS
 USED FOR PROPORTIONING AND DETERMINING THE CORNER LOCATION)
- USED FOR PROPORTIONING AND DETERMINING THE CORNER LOCATION
- RESTORED OR REESTABLISHED IN A LOCATION THAT DIFFERS FROM A PREVIOUS RESTORATION OR REESTABLISHMENT
 (INCLUDE A PLAN VIEW DRAWING AND INDICATE WHAT WAS SET AND/OR FOUND)

Describe the monument and accessories used to perpetuate the location of the corner. (Include a plan view drawing and indicated what was set and/or found)

LEGEND:

- △ SET 5/8"φ REBAR TIE
- FOUND STONE MONUMENT
- ⊗ EX. SECTION COR. MONUMENT AS DESCRIBED
- SET 7/8"X24" REBAR WITH GRANT. CO. ALUM CAP
- () RECORDED AS
- ⊗ FD. RING SHANK NAIL
- x—x— FENCE
- ▲ FOUND 3/4" REBAR
- ⊗ FOUND POLE BARN SPIKE



SECT <u>27</u>	SECT <u>26</u>
TOWN <u>7</u> N	TOWN <u>7</u> N
RANGE <u>2W</u>	RANGE <u>2W</u>
●	
SECT <u>34</u>	SECT <u>35</u>
TOWN <u>7</u> N	TOWN <u>7</u> N
RANGE <u>2W</u>	RANGE <u>2W</u>

● = LOCATION OF CORNER

THE N1/4 COR. OF SECT 35 T 7 N, R 2W

THE S1/4 COR. OF SECT 26 T 7 N, R 2W

THE ___ COR. OF SECT ___ T ___ N, R ___

THE ___ COR. OF SECT ___ T ___ N, R ___

GRANT _____ COUNTY, WISCONSIN

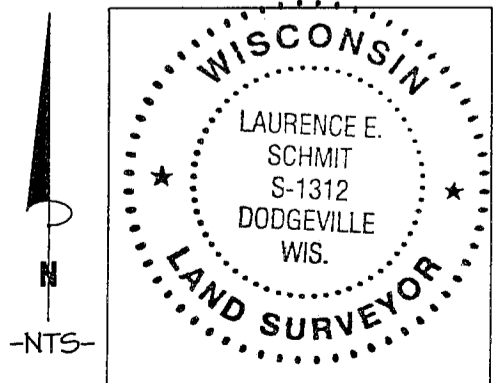
JOB ID: 045-164 BOOK #: 2005-1 p 10

I, LAURENCE E SCHMIT CERTIFY THAT THE CORNER LOCATION SHOWN ON THIS RECORD WAS DETERMINED BY ME OR UNDER MY DIRECTION AND CONTROL AND THAT THIS U.S. PUBLIC LAND SURVEY MONUMENT RECORD IS CORRECT AND COMPLETE TO THE BEST OF MY KNOWLEDGE AND BELIEF.

Laurence E Schmit 6-14-05

SIGNATURE

DATE:



LAND SURVEYORS SEAL

INDEX NUMBER 104

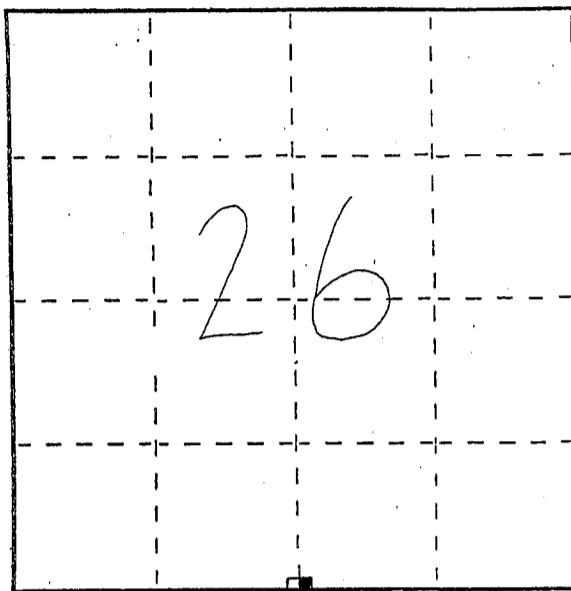
U. S. PUBLIC LAND SURVEY MONUMENT RECORD

INSTRUCTIONS: This record shall show the location of the corner and shall include all of the following nine elements (a through i).

(a) Identify the corner by reference to the U.S. public land survey system.

○ = Corner monument restored.

South 1/4 Cor Sec. 26
Town 7 North,
Range 2 West
Hickory Grove Twp.,
Grant Co. WI.



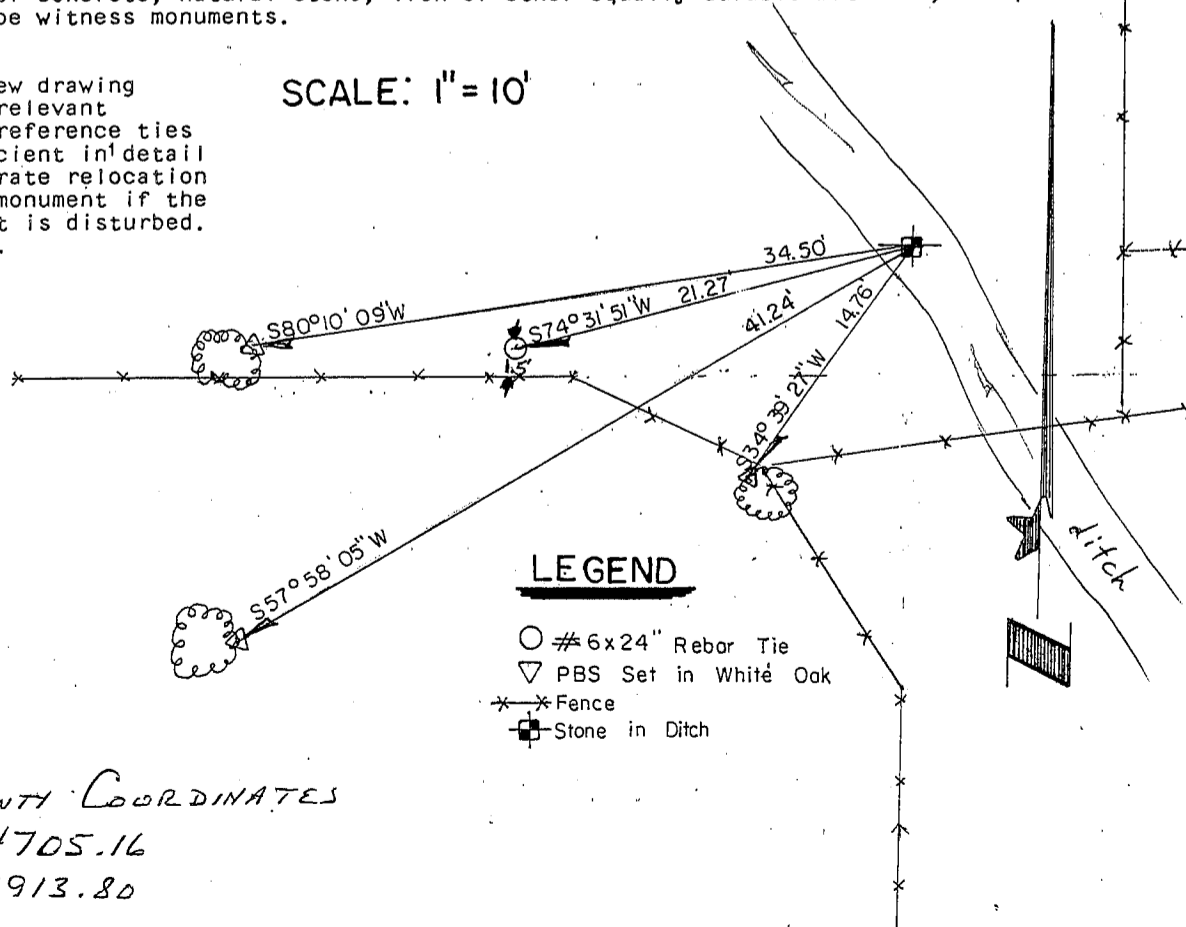
(b) Describe any record evidence, monument evidence, occupational evidence, testimonial evidence or any other material evidence you considered, and whether the monument was found or placed.

STONE Monument Found & Accepted After Comparison to Existing Physical Evidence of Roads & Fences & Verification by Proportionate Measurements From EDM & GPS Surveys of the Area.

(c) In the plan view drawing below, provide reference ties to at least 4 witness monuments, or, if the location is within a municipality, to at least 2 witness monuments. (Witness monuments shall be made of concrete, natural stone, iron or other equally durable material, ~~except wood.~~) Describe witness monuments.

(d) Show a plan view drawing depicting the relevant monuments and reference ties which is sufficient in detail to enable accurate relocation of the corner monument if the corner monument is disturbed. Indicate north.

SCALE: 1" = 10'



GRANT COUNTY COORDINATES
X 854705.16
Y 595913.80

(e) Describe any material discrepancy between the location of the corner as restored or reestablished and the location of that corner as previously restored or reestablished by distance and direction. Show the discrepancy on the plan view drawing under (d), above. Show the distances between the corner as previously restored or reestablished and (1) the corner as restored or reestablished, and (2) to at least 2 of the witness monuments shown on the drawing in (d), above.

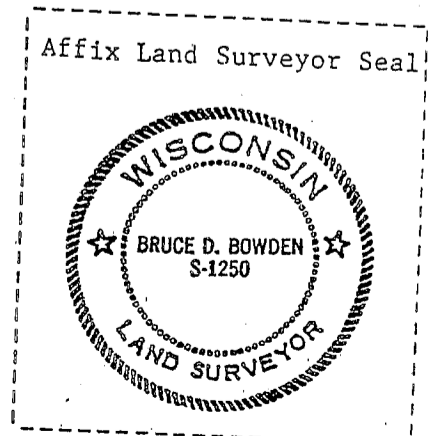
NONE.

(f) Was the corner restored through acceptance of (1) an obliterated evidence location, or, (2) a found perpetuated location?

(2) A Found Perpetuated Location

(g&h) Was the corner reestablished through lost corner proportionate methods? If so, show the method, including the directions and distances to other public land survey corners used as evidence or used for proportioning in determining the corner location?

NO



(i) I, BRUCE D. BOWDEN,
(type or print name) certify that the corner location shown on this record was determined by me or under my direction and control and that this U.S. Public Land Survey Monument Record is correct and complete to the best of my knowledge and belief.

Bruce D. Bowden
Signature

Nov-29, 1996
Date