

GRANT COUNTY CERTIFIED LAND CORNER

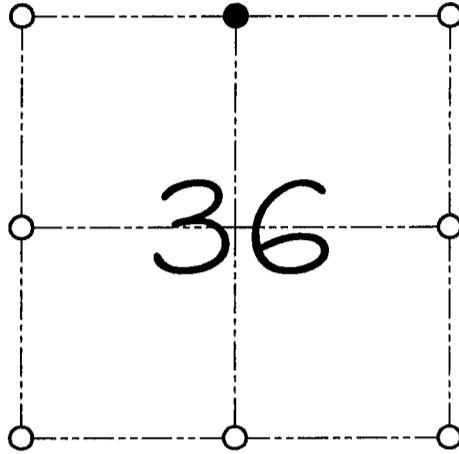
CORNER NUMBER 102

CERTIFICATE:

I, Larry L. Austin, do hereby certify that on the 17th day of March, 2000, I found evidence of the North 1/4 corner of Section 36, Town 7 North, Range 2 West, of the 4th Principal Meridian, and I re-established said corner according to the Wisconsin statutes as shown and described hereon.

Dated this 31st day of March, 2000

Larry L. Austin
Larry L. Austin S-1903



● = CORNER LOCATION

NORTH 1/4 CORNER OF SECTION 36, T.7 N R.2 W TOWN OF HICKORY GROVE

HISTORY OF ORIGINAL CORNER ESTABLISHMENT:

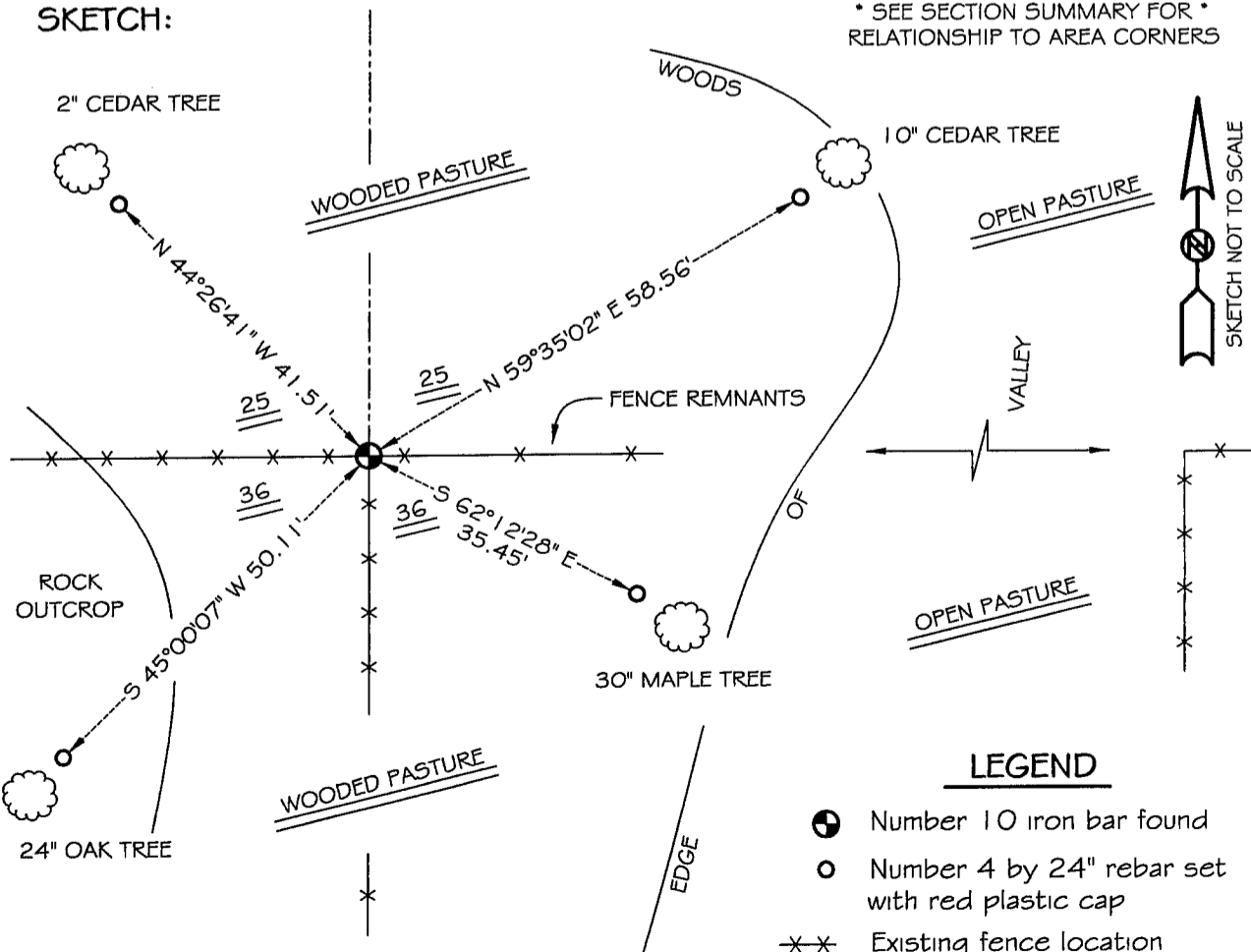
Corner was originally set in 1832 by Harvey Parke.
In 1979 Bruce Bowden set a #10 iron bar at this location.

DESCRIPTION OF CORNER EVIDENCE FOUND:

I found the #10 iron bar and accepted it's location after an E.D.M. & G.P.S. traverse of the Section.

DESCRIPTION OF CORNER AND WITNESS MONUMENTS, references and accessories used to perpetuate the original or re-established location of this corner
WITNESS TO THE CORNER LOCATION: CODY AUSTIN & SHANE AUSTIN

SKETCH:



LEGEND

- Number 10 iron bar found
- Number 4 by 24" rebar set with red plastic cap
- ×× Existing fence location