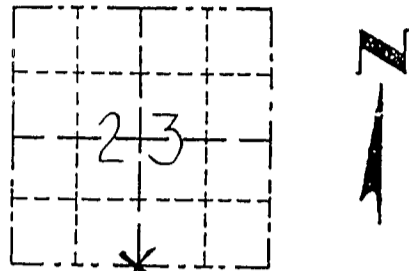


Survey Monument Record

TYPE OF MONUMENT 1 1/4" IRON PIPE  
 STATE PLANE COORDINATES: N \_\_\_\_\_  
 E \_\_\_\_\_  
 ELEVATION — M.S.L. DATUM: \_\_\_\_\_  
 THETA ANGLE: \_\_\_\_\_  
 FIELD BOOK: 95-5  
 PAGE \_\_\_\_\_

CORNER NO. \_\_\_\_\_ JUN 21 1995  
 SECTION 23  
 TOWN 7N  
 RANGE 2W

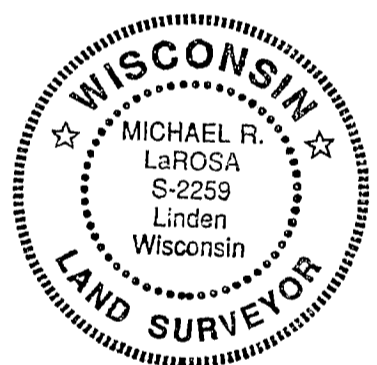


LOCATION  
 (Indicated by "X")  
 FOUND PERPETUATED LOCATION  
 OBLITERATED EVIDENCE LOCATION  
 LOST CORNER (RESTORED BY PROPORTIONATE METHODS)

BASIS FOR MONUMENT LOCATION

(Use reverse side if necessary)  
 Show info such as: History of corner, with reference to Vol. and pg., dates, surveyor; exact description of monument replaced; if location computed, by taped or EDM traverse; landowner, remarks, etc.

There are no recent survey records of this corner. The occupied location of a 3 way fence intersection was accepted and monumented after it fit well with the restored SW and occupied SE corners of the section.



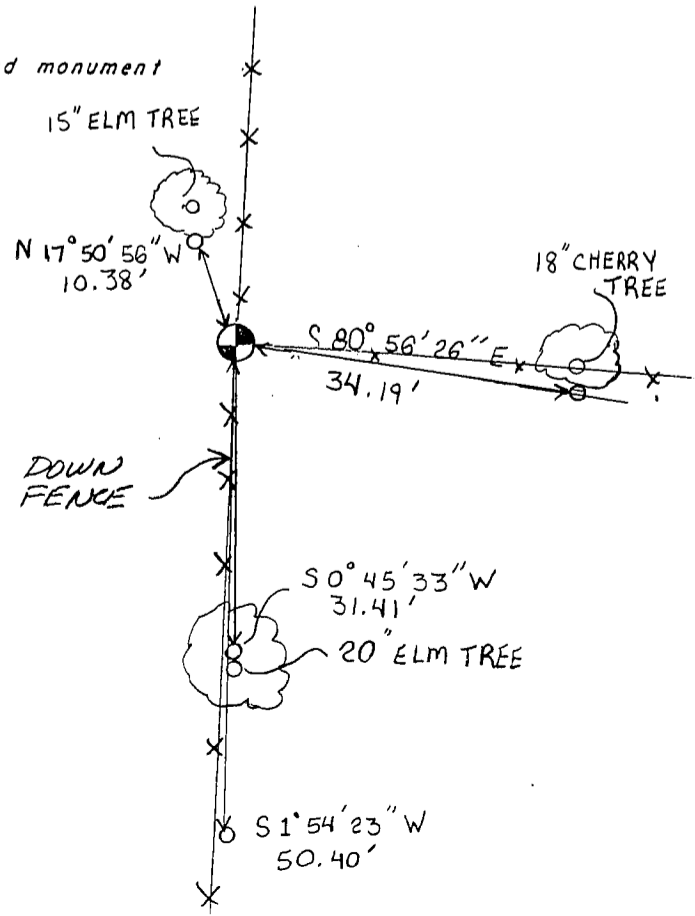
CERTIFIED CORRECT TO THE BEST OF MY KNOWLEDGE AND BELIEF

*Michael R. LaRosa*  
 Registered Land Surveyor

DATE: 6/19/1995

TIE SKETCH

Show at least three (4) ties and monument



Scale 1" = 20' ±

