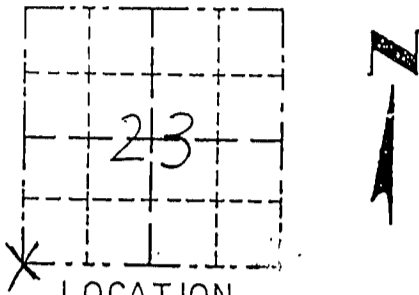


Survey Monument Record

CORNER NO. _____ JUN 21 1995
 SECTION 23
 TOWN 7N
 RANGE 2W

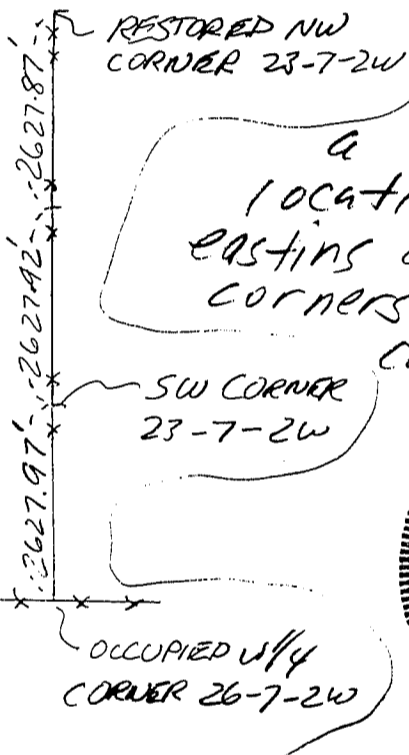
TYPE OF MONUMENT Grant Co. Driveable Aluminum
 STATE PLANE COORDINATES: N _____
 E _____
 ELEVATION — M.S.L. DATUM: _____
 THETA ANGLE: _____
 FIELD BOOK: 95-5
 PAGE _____



BASIS FOR MONUMENT LOCATION

(Use reverse side if necessary)
 Show info such as: History of corner, with reference to Vol. and pg., dates, surveyor; exact description of monument replaced; if location computed, by taped or EDM traverse; landowner, remarks, etc.

- LOCATION (Indicated by "X")
- FOUND PERPETUATED LOCATION
 - OBLITERATED EVIDENCE LOCATION
 - LOST CORNER (RESTORED BY PROPORTIONATE METHODS)



There are no recent survey records of this corner. Occupational evidence is a north-south fence line at the corner location. This fence was accepted for eastings as it checked out well with adjacent corners East and West. The northings of the corner was based on a prorate as shown.



CERTIFIED CORRECT TO THE BEST OF MY KNOWLEDGE AND BELIEF

Michael R. LaRosa
 Registered Land Surveyor
 DATE: 6/19/1995

TIE SKETCH

Show at least three (4) ties and monument

