

Survey Monument Record

CORNER NO. \_\_\_\_\_ APR 24 1985

TYPE OF MONUMENT Grant Co. Alum. Mon. Set

SECTION 22

STATE PLANE COORDINATES: N \_\_\_\_\_  
E \_\_\_\_\_

TOWN 7 N

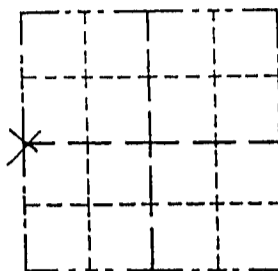
RANGE 2 W

ELEVATION — M.S.L. DATUM: \_\_\_\_\_

THETA ANGLE: \_\_\_\_\_

FIELD BOOK: 94-9

PAGE \_\_\_\_\_



LOCATION  
(Indicated by "X")

BASIS FOR MONUMENT LOCATION

(Use reverse side if necessary)

Show info such as: History of corner, with reference to Vol. and pg., dates, surveyor; exact description of monument replaced; if location computed, by taped or EDM traverse; landowner, remarks, etc.

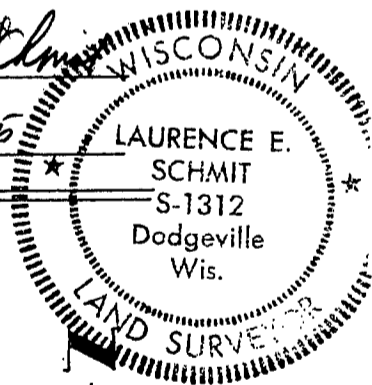
SEAL:

The only recorded survey records of this corner since the original Govt. were by Krohn (3/1977) and Sampson (12/1/1902). Sampson made no reference of monuments placed and noted that the original bearing trees were dead or stumps. There is no occupational evidence at the corner and extensive logging has destroyed any evidence of bearing trees. There is a long standing 3 way fence intersection approximately 60' north of the corner. The restored corner location was based a prorate between the NW corner of the SW 1/4 of the NW 1/4 and a pipe found at the SW corner. It was placed on line with the fence to north extended southerly.

CERTIFIED CORRECT

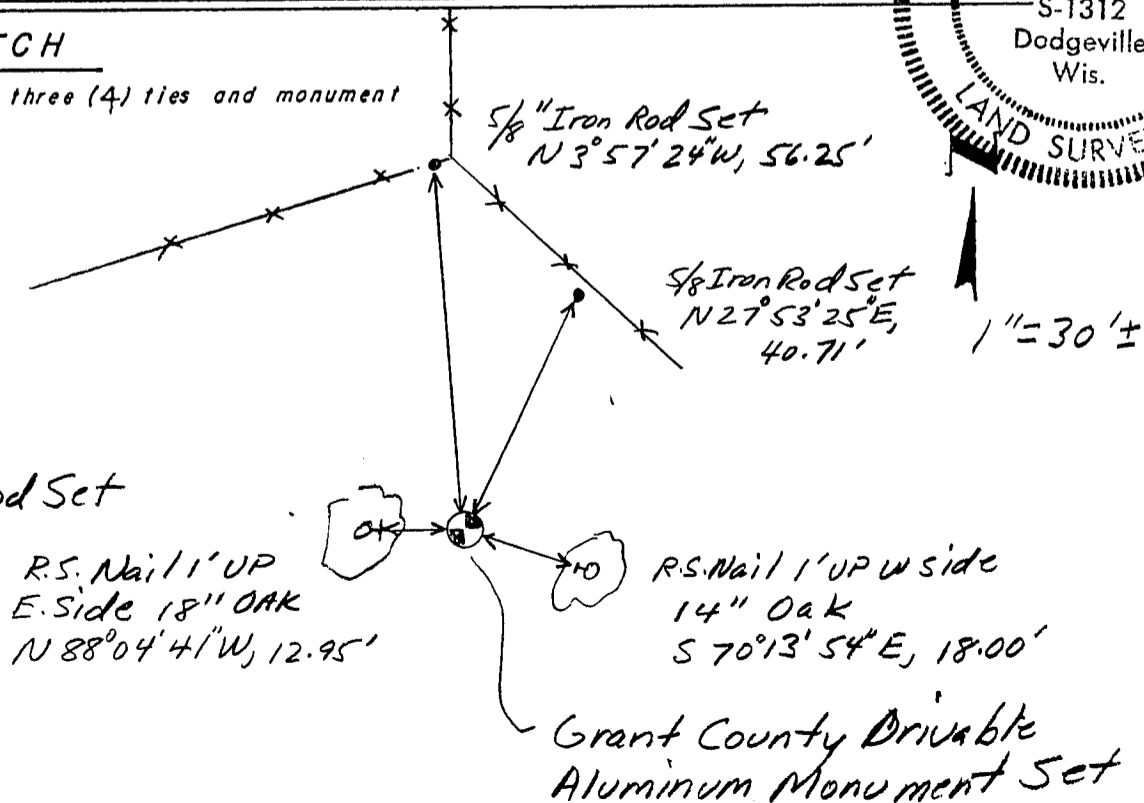
*Laurence E. Schmit*  
Registered Land Surveyor

DATE: 4-14-85



TIE SKETCH

Show at least three (4) ties and monument



Legend

- x — x — Fence
- Iron Rod Set