

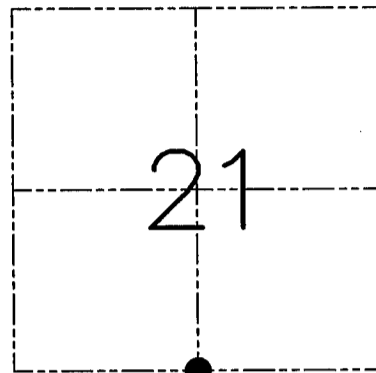
U.S. PUBLIC LAND SURVEY MONUMENT RECORD - GRANT COUNTY, WI
 Section 21, Town 7 North Range 2 West, Town of Hickory Grove

CERTIFICATE

I, Larry L. Austin, do hereby certify that the corner location on this record was determined by me and/or under my direct supervision and that this U.S. public land survey monument record is correct and complete to the best of my knowledge and belief.

Dated this 19th day of April, 2001

Larry L. Austin
 Larry L. Austin S-1903



● = CORNER LOCATION

HISTORY OF CORNER ESTABLISHMENT

Corner was originally set in 1832 by Harvey Parke. In 1902 Sampson tied to the original corner. I set the corner in 1997 at an occupied location.

DESCRIPTION OF CORNER EVIDENCE FOUND

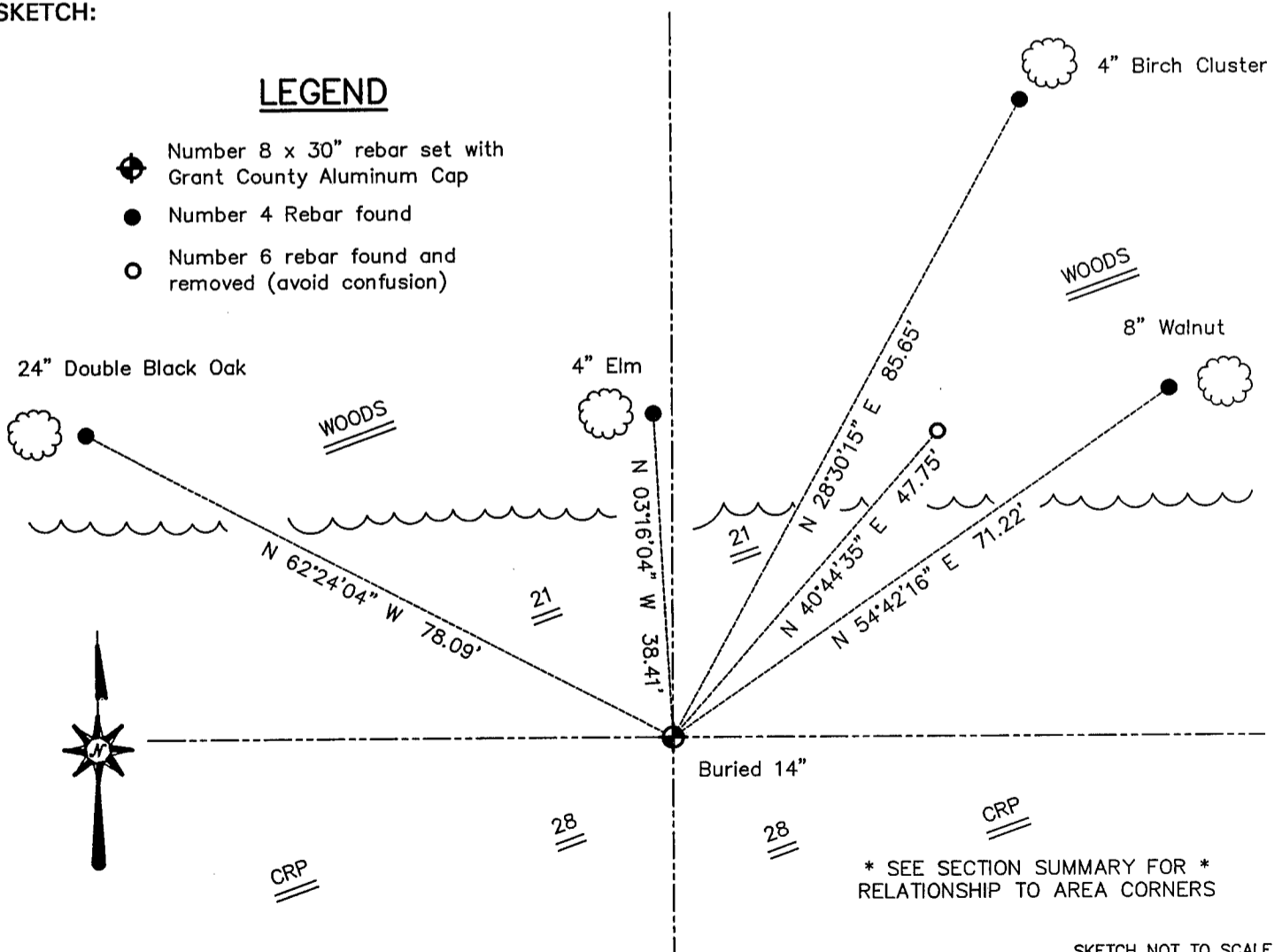
I reset the corner proportionately between the Southwest and Southeast corners of Section 21. My original location was a fence that was temporarily placed to hold cattle out of fields. Local land owners stated that the corner used to be further South. This verified the proportioned location.

DESCRIPTION OF CORNER AND WITNESS MONUMENTS, references and accessories used to perpetuate the original or re-established location of this corner. Witnesses to the corner location Bobby Sedgwick & Shane Austin & Tim Fauver.

SKETCH:

LEGEND

- Number 8 x 30" rebar set with Grant County Aluminum Cap
- Number 4 Rebar found
- Number 6 rebar found and removed (avoid confusion)



* SEE SECTION SUMMARY FOR *
 RELATIONSHIP TO AREA CORNERS

SKETCH NOT TO SCALE

AUSTIN ENGINEERING, LLC

4211 HWY 81 EAST, LANCASTER, WI 53813
 PHONE 608-723-6363 FAX 608-723-6702

FIELDBOOK: SDR33, 2042
 G: \T7NR2W\33
 C: \SWA\TIE\T7NR2W\88
 CREW: BS-SB-SA-TF

DRAWN BY: SW AUSTIN
 APPROVED: LL AUSTIN

CORNER NUMBER 88

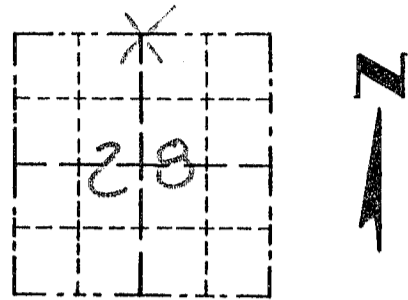
JUN 28 2001

Survey Monument Record

TYPE OF MONUMENT 3/4" X 24" IRON
BAR SET AT CORNER

CORNER NO. 88
 SECTION 28
 TOWN 7N
 RANGE 2W

FIELD BOOK: 97-34
 PAGE _____



LOCATION
 (Indicated by "X")

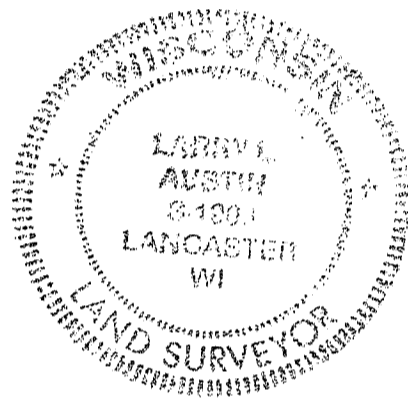
BASIS FOR MONUMENT LOCATION

(Use reverse side if necessary)

Show info such as: History of corner, with reference to Vol. and pg., dates, surveyor; exact description of monument replaced; if location computed, by taped or EDM traverse; landowner, remarks, etc.

CORNER SET IN 1832 BY HARVEY PARKE; NO RECORD OF CORNER FOUND SINCE ORIGINAL SURVEYS; CORNER WAS SET AT AN OCCUPIED FENCE CORNER. VERIFIED THIS LOCATION USING EDM METHODS.

SEAL:



CERTIFIED CORRECT

Larry Austin
 Registered Land Surveyor

DATE: 12/31/97

TIE SKETCH

Show at least three (3) ties and monument

LEGEND

- 3/4" X 24" IRON BAR SET
- 1/2" X 15" IRON BAR SET
- FENCE REMANENCE

