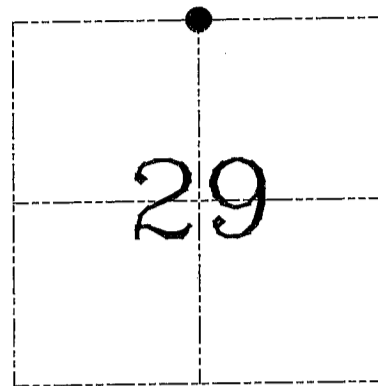
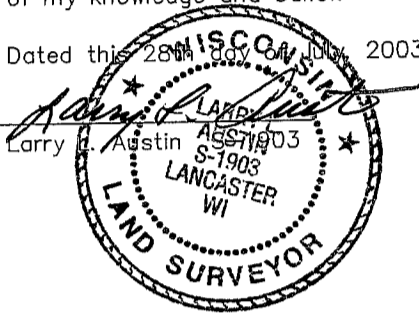


**U.S. PUBLIC LAND SURVEY MONUMENT RECORD – GRANT COUNTY, WI**  
**Section 29, Town 7 North Range 2 West, Town of Hickory Grove**

**CERTIFICATE**

I, Larry L. Austin, do hereby certify that the corner location on this record was determined by me and/or under my direct supervision and that this U.S. public land survey monument record is correct and complete to the best of my knowledge and belief.

Dated this 28th day of July, 2003



● = CORNER LOCATION

**HISTORY OF CORNER ESTABLISHMENT**

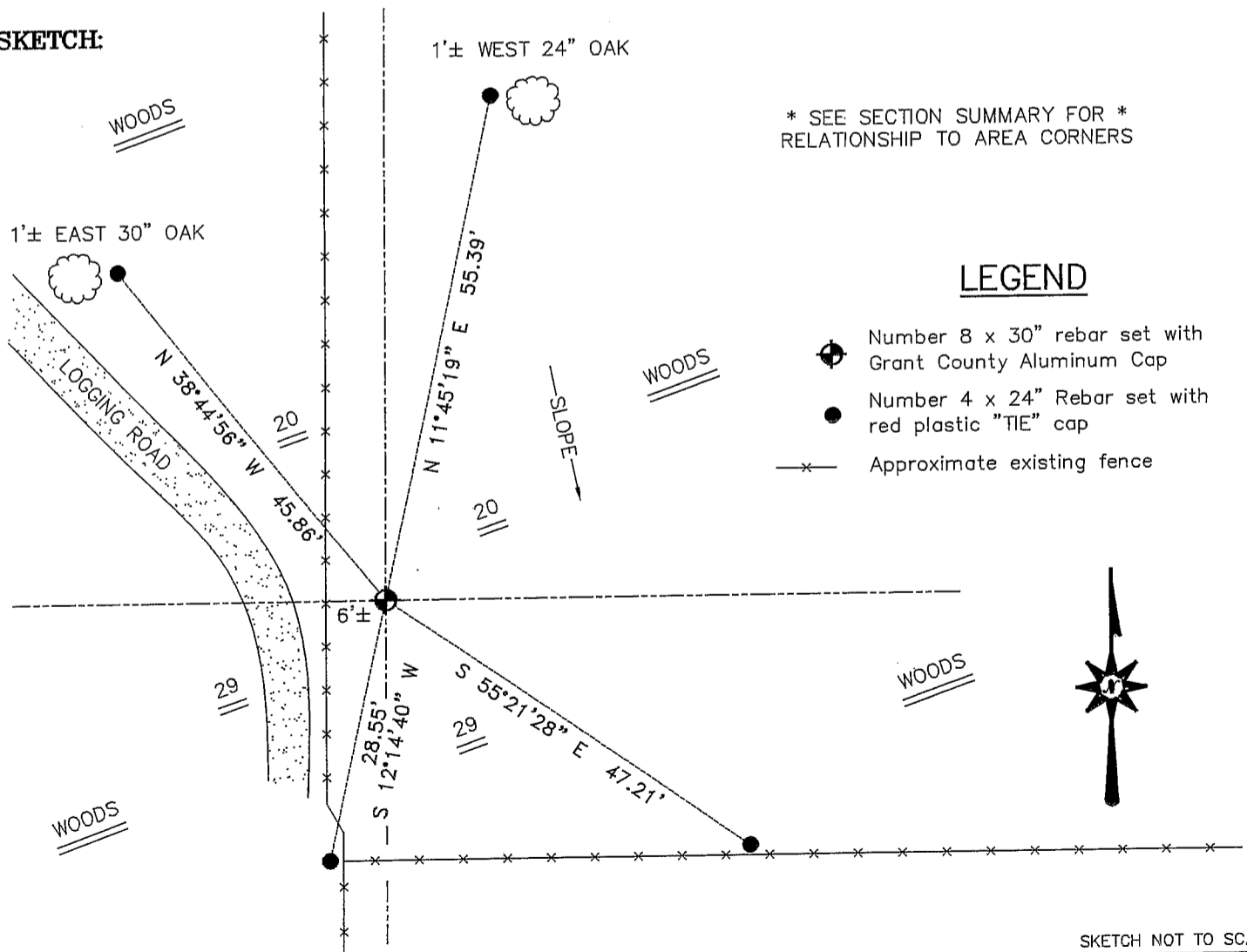
Corner was originally set in 1833 by Parke.  
 No other record of the corner was found.

**DESCRIPTION OF CORNER EVIDENCE FOUND**

I reset the corner on a straight line proportion between the Northwest and Northeast corners of Section 29. Verified this location using EDM & GPS methods.

**DESCRIPTION OF CORNER AND WITNESS MONUMENTS**, references and accessories used to perpetuate the original or re-established location of this corner. Witnesses to corner location Bobby Sedgwick & Shane Austin & Brad Digman

**SKETCH:**



\* SEE SECTION SUMMARY FOR \*  
 RELATIONSHIP TO AREA CORNERS

**LEGEND**

- Number 8 x 30" rebar set with Grant County Aluminum Cap
- Number 4 x 24" Rebar set with red plastic "TIE" cap
- x— Approximate existing fence



SKETCH NOT TO SCALE

**AUSTIN ENGINEERING, LLC**

4211 HWY 81 EAST, LANCASTER, WI 53813  
 PHONE 608-723-6363 FAX 608-723-6702

FIELDBOOK: TDSR, 2313  
 G: \T7NR2W\33  
 H: \TIE\T7NR2W\90  
 JOB NUMBER 03S214

DRAWN BY: SW AUSTIN  
 APPROVED: LL AUSTIN

**CORNER NUMBER 90**