

U.S. PUBLIC LAND SURVEY MONUMENT RECORD

(As Required By s. A-E 7.08, WI Adm. Code)

History of original corner establishment and subsequent restorations and description of any record, monument, occupational, testimonial or other evidence considered:

HISTORY IS THE ORIG. GOVT SURVEY & TIE SHEET FILED FEB 17, 1992.
THE CORNER WAS SET ACCORDING TO TIES FOUND IN PLACE

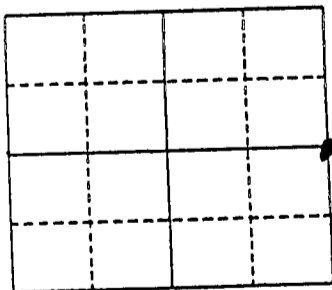
Corner was: (Check All That Apply)

- Restored through acceptance of an obliterated evidence location
- Restored through acceptance of a found perpetuated location
- Considered a lost corner and reestablished through lost corner proportionate methods (include a plan view drawing showing distances and directions to other Public Land Survey Corners used for proportioning and determining the corner location)
- Restored or reestablished in a location that differs from a previous restoration or reestablishment (include a plan view drawing and indicate what was set and /or found)

Describe the monument and accessories used to perpetuate the location of this corner. (Include a plan view drawing and indicate what was set and/or found)

SET 7/8" x 24" REBAR WITH GRANT COUNTY ALUM. CAP

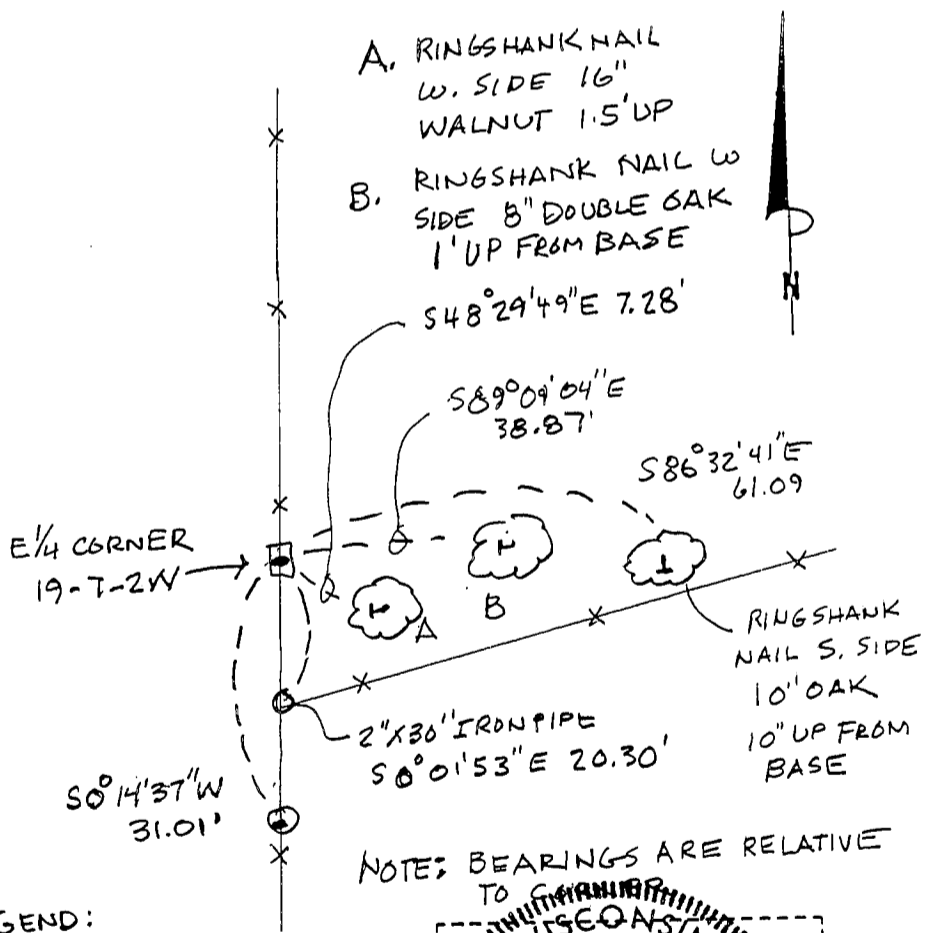
The E 1/4
corner of Section 19
T. 7 N., R. 2W
GRANT County, Wisconsin
Job ID: 995-252
Book # 99-7 p.24



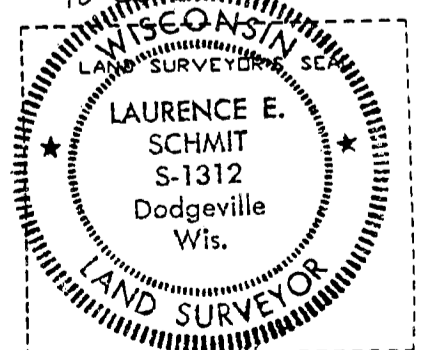
● = Location of Corner

LEGEND:

- SECTION CORNER AS DESCRIBED
- X — FENCE
- ⊙ 1/2" REBAR



NOTE: BEARINGS ARE RELATIVE TO GRANITE



I, LAURENCE E. SCHMIT
Type or print name certify that the corner location shown on this record was determined by me or under my direction and control and that this U.S. Public Land Survey Monument Record is correct and complete to the best of my knowledge and belief.

Laurence E. Schmit 2-29-2000
Signature Date

Index No. 75

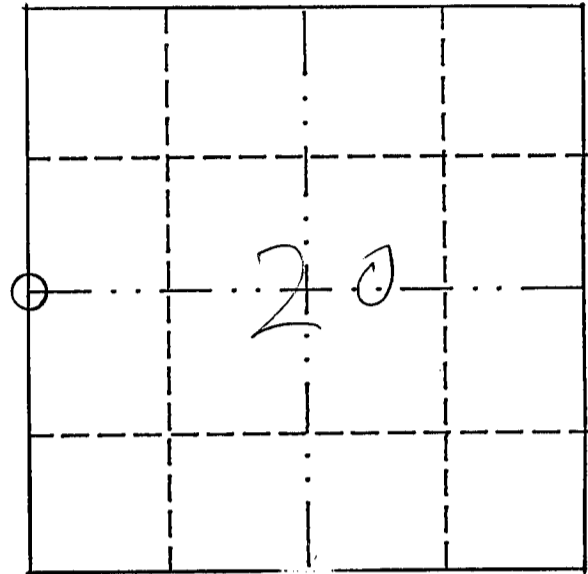
U.S. PUBLIC LAND SURVEY MONUMENT RECORD

THIS RECORD SHALL SHOW THE LOCATION OF THE CORNER AND SHALL INCLUDE ALL OF THE FOLLOWING NINE ELEMENTS (A THROUGH I). FEB 17 1992

(a) Identify the corner by reference to the U.S. public land survey system.

W¹/₄ CORNER T7N R2W

T7N R2W



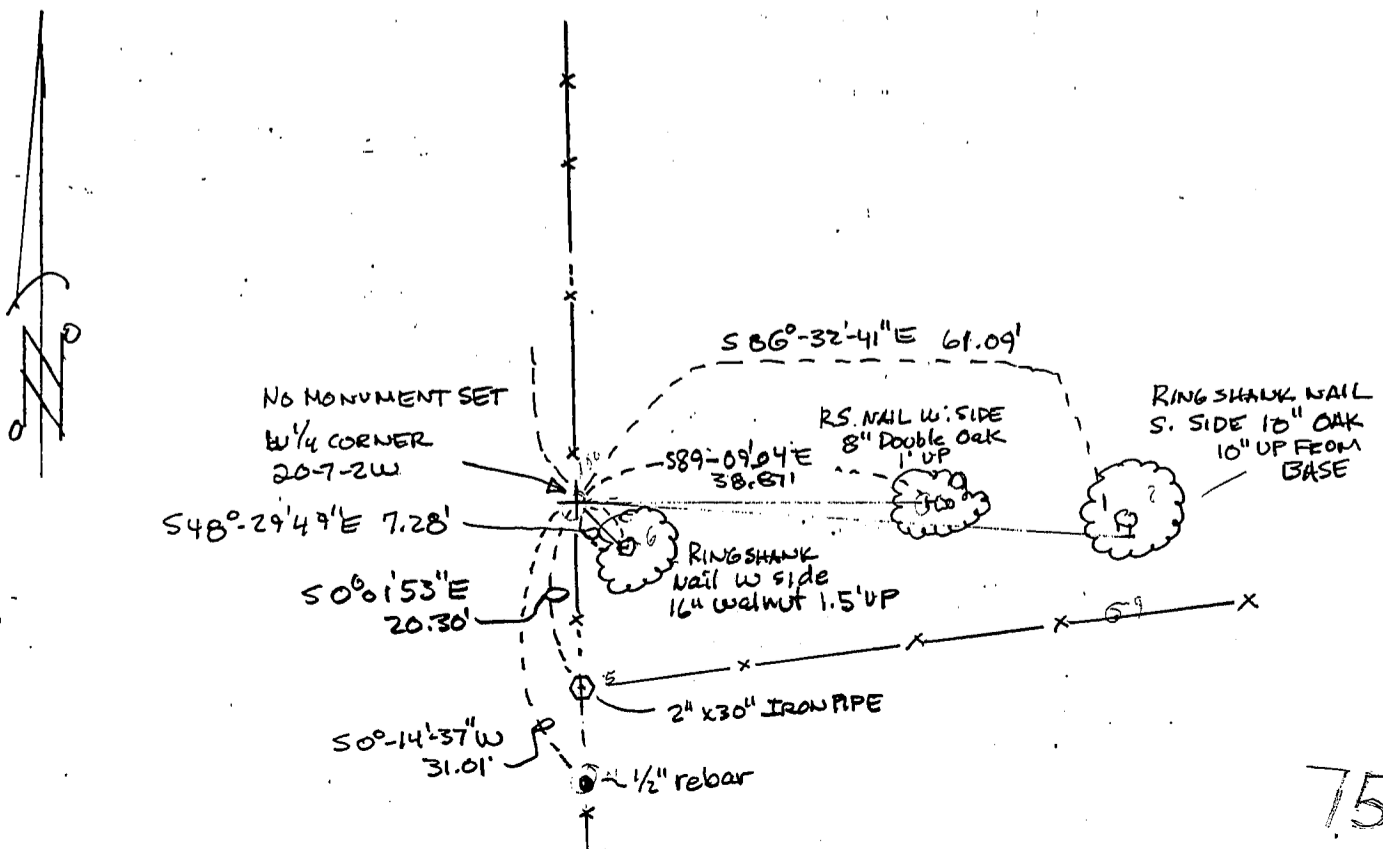
○ = corner monument restored.

(b) Describe any record evidence, monument evidence, occupational evidence, testimonial evidence or any other material evidence you considered, and whether the monument was found or placed.

NO MONUMENT EVIDENCE. OCCUPATIONAL EVIDENCE IS FL E WHICH IS NOT AT CORRECT CORNER LOCATION AS INDICATED BY LAND OWNER E TRAVERSE OF W LINE OF SECTION 20. MONUMENT WAS NOT SET BUT TIES INDICATE EXACT LOCATION OF CORNER

(c) In the plan view drawing below, provide reference ties to at least four witness monuments, or, if the location is within a municipality, to at least two witness monuments. (Witness monuments shall be made of concrete, natural stone, iron or other equally durable material.) Describe witness monuments.

(d) Show a plan view drawing depicting the relevant monuments and reference ties which is sufficient in detail to enable accurate relocation of the corner monument if the corner monument is disturbed. Indicate north.



Describe any material discrepancy between the location of the corner as restored or reestablished and the location of that corner as previously restored or reestablished by distance and direction. Show the discrepancy on a plan view drawing under (d), above. Show the distances between the corner as previously restored or reestablished and (1) the corner as restored or reestablished, and (2) to at least two of the witness monuments shown on the drawing in (d), above.

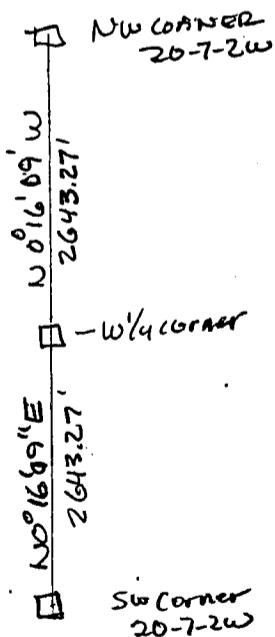
NONE

(f) Was the corner restored through acceptance of (1) an obliterated evidence location, or (2) a found perpetuated location?

1)

(g) & (h) Was the corner reestablished through lost corner proportionate methods? If so, show the method, including the directions and distances to other public land survey corners used as evidence or used for proportioning in determining the corner location?

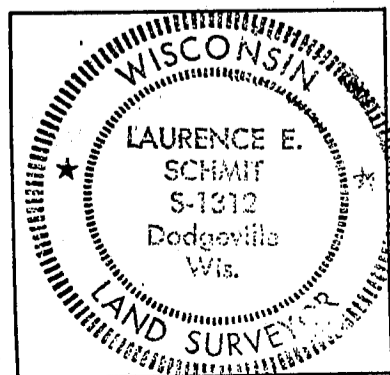
CORNER WAS ESTABLISHED BY SINGLE PROPORTIONATE MEASUREMENT BETWEEN ESTABLISHED SW SECTION CORNER & FOUND MONUMENT AT NW SECTION CORNER & ADJUSTED Easterly to Existing N-S Fenceline.



(i) I, LAURENCE E. SCHMIT
 (type or print name) certify that the corner location shown on this record was determined by me or under my direction and control and that this U.S. Public Land Survey Monument Record is correct and complete to the best of my knowledge and belief.

Laurence E. Schmit
 Signature

11/19/90
 Date



affix land surveyor seal