

U.S. PUBLIC LAND SURVEY MONUMENT RECORD

(As Required By s. A-E 7.08, WI Adm. Code)

History of original corner establishment and subsequent restorations and description of any record, monument, occupational, testimonial or other evidence considered:

I SET CORNER BY PROPORTIONATE MEASUREMENT ACCORDING TO THE ORIGINAL GOVT. RECORD AND FILED THE SHEET ON
 I SUBSEQUENTLY LEARNED THAT THE CLOSING DISTANCE IS 21.47 CHAINS, NOT 21.67 AS USED IN MY CALCULATION. THIS SHEET IS PREPARED TO CORRECT AN ERROR. THE CAP WAS REMOVED ON THE EX. MONUMENT & A NEW MONUMENT PLACED AS SHOWN BELOW

Corner was: (Check All That Apply)

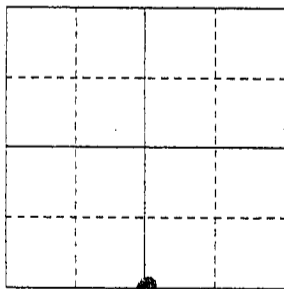
- Restored through acceptance of an obliterated evidence location
- Restored through acceptance of a found perpetuated location
- Considered a lost corner and reestablished through lost corner proportionate methods (include a plan view drawing showing distances and directions to other Public Land Survey Corners used for proportioning and determining the corner location)
- Restored or reestablished in a location that differs from a previous restoration or reestablishment (include a plan view drawing and indicate what was set and/or found)

Describe the monument and accessories used to perpetuate the location of this corner. (Include a plan view drawing and indicate what was set and/or found)

238-81 N82°00'05"W 65.55'	238-235 S60°17'47"E 35.19'
238-82 N2°15'25"W 121.77'	238-236 S7°06'25"W 127.26'
238-83 N15°21'16"E 180.73'	238-237 N52°47'39"E 70.07'
238-84 S49°34'25"W 16.74'	
238-234 N21°58'45"E 88.95'	

The 5/4
 corner of Section 19
 T. 7 N., R. 2W #.,
GRANT County, Wisconsin

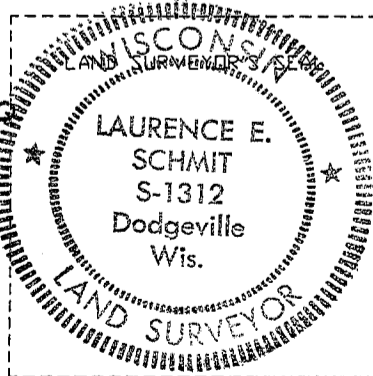
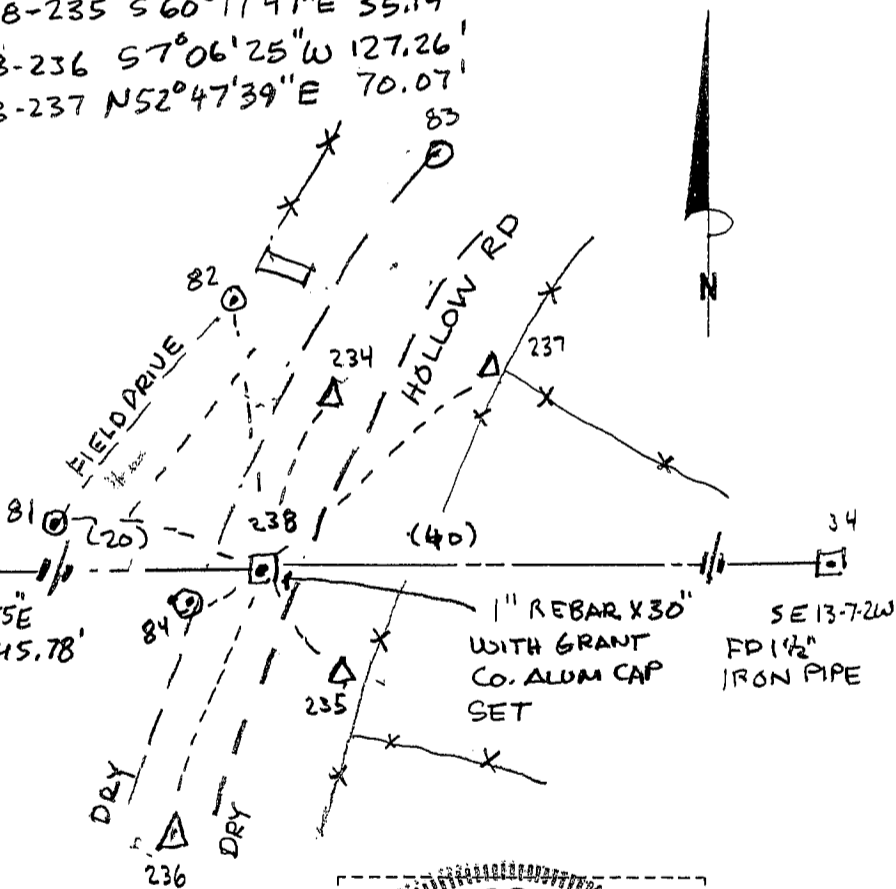
Job ID: 995-252
 Book # 99-7 p 35



● = Location of Corner

LEGEND:

- SECTION COR. AS DESCRIBED
- ⊙ SET 5/8" REBAR
- △ #6 REBAR X 24" WITH YELLOW PLASTIC CAP
- () RECORDED AS



I, LAURENCE E. SCHMIT
 (Type or print name) certify that the corner location shown on this record was determined by me or under my direction and control and that this U.S. Public Land Survey Monument Record is correct and complete to the best of my knowledge and belief.

Laurence E. Schmit 8-17-2000
 Signature Date

Index No. 92