

U.S. PUBLIC LAND SURVEY MONUMENT RECORD

(As Required By s. A-E 7.08, WI Adm. Code)

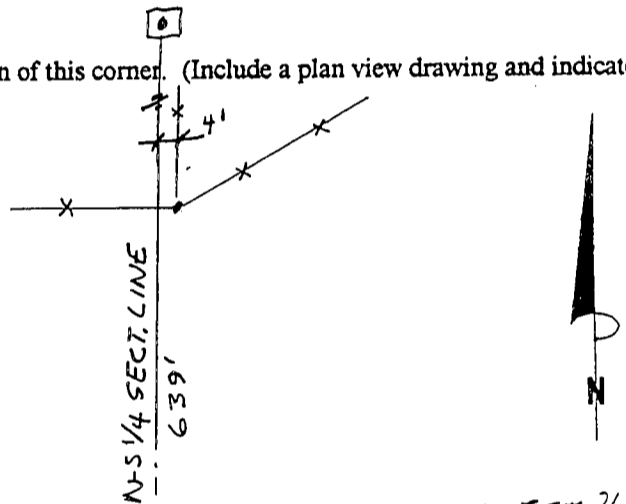
History of original corner establishment and subsequent restorations and description of any record, monument, occupational, testimonial or other evidence considered:

HISTORY IS ORIGINAL GOV'T SURVEY. NO MONUMENT FOUND. OCCUPATIONAL EVIDENCE IS E-W FENCE NEAR CORNER LOCATION & A NORTH-WEST & NE FENCE INTERSECTION 639' N OF THE CORNER. A N-S-E FENCE INTERSECTION EXISTS AT THE OCCUPIED SE COR. OF THE FRACTIONAL SW-SW 18-7-2W. THE CORNER WAS PLACED ON A STRAIGHT LINE BETWEEN SE & SW CORNERS WITH DISTANCE PRORATED BETWEEN SE & OCCUPIED 40 COR. THIS FITS BETTER TO EX. PHYSICAL EVIDENCE AS COMPARED TO PRORATION BETWEEN SE & SW SECTION Corner was: (Check All That Apply) **CORNERS TO ORIG. GOV'T RECORD (1332.22' PER 40)**

- Restored through acceptance of an obliterated evidence location
- Restored through acceptance of a found perpetuated location
- Considered a lost corner and reestablished through lost corner proportionate methods (include a plan view drawing showing distances and directions to other Public Land Survey Corners used for proportioning and determining the corner location)
- Restored or reestablished in a location that differs from a previous restoration or reestablishment (include a plan view drawing and indicate what was set and/or found)

Describe the monument and accessories used to perpetuate the location of this corner. (Include a plan view drawing and indicate what was set and/or found)

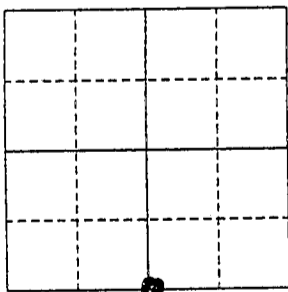
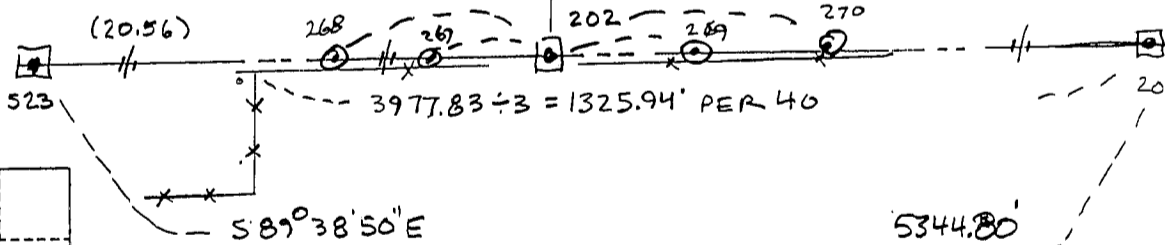
202-267 N 84° 43' 38" W 17.03
 202-268 N 87° 18' 03" W 40.65
 202-269 S 88° 11' 24" E 26.04'
 202-270 S 88° 38' 17" E 50.21'



S 1/4 COR 18-7-2W SET 7/8" x 24" REBAR ON E-W FENCE

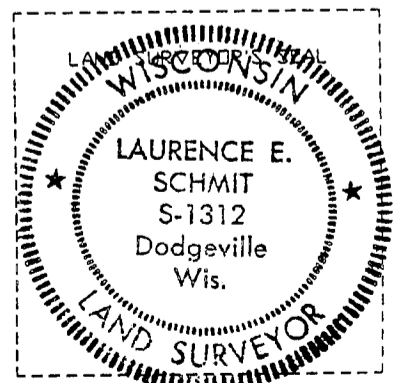
The S 1/4
 corner of Section 18
 T. 7 N., R. 2 W W.
GRANT County, Wisconsin

Job ID: 995-252
 Book # _____



LEGEND:

- SECTION CORNER AS DESCRIBED
- FENCE
- () RECORDED AS
- = Location of Corner



I, LAURENCE E. SCHMIT
 Type or print name) certify that the corner location shown on this record was determined by me or under my direction and control and that this U.S. Public Land Survey Monument Record is correct and complete to the best of my knowledge and belief.

Laurence E. Schmit 9-29-2000
 Signature Date

Index No. 72