

U.S. PUBLIC LAND SURVEY MONUMENT RECORD – GRANT COUNTY, WI

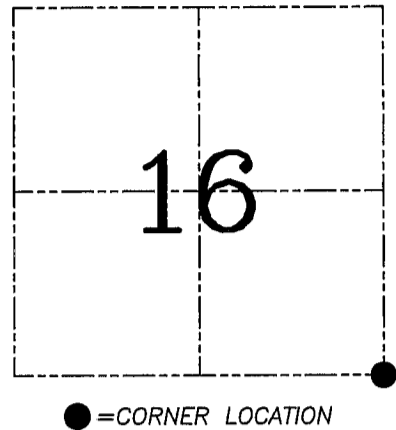
Section 16, Town 7 North Range 2 West, Town of Hickory Grove

CERTIFICATE

I, Larry L. Austin, do hereby certify that the corner location on this record was determined by me and/or under my direct supervision and that this U.S. public land survey monument record is correct and complete to the best of my knowledge and belief.

Dated this 1st day of February, 2006

Larry L. Austin
Larry L. Austin S-1903



HISTORY OF CORNER ESTABLISHMENT

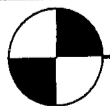
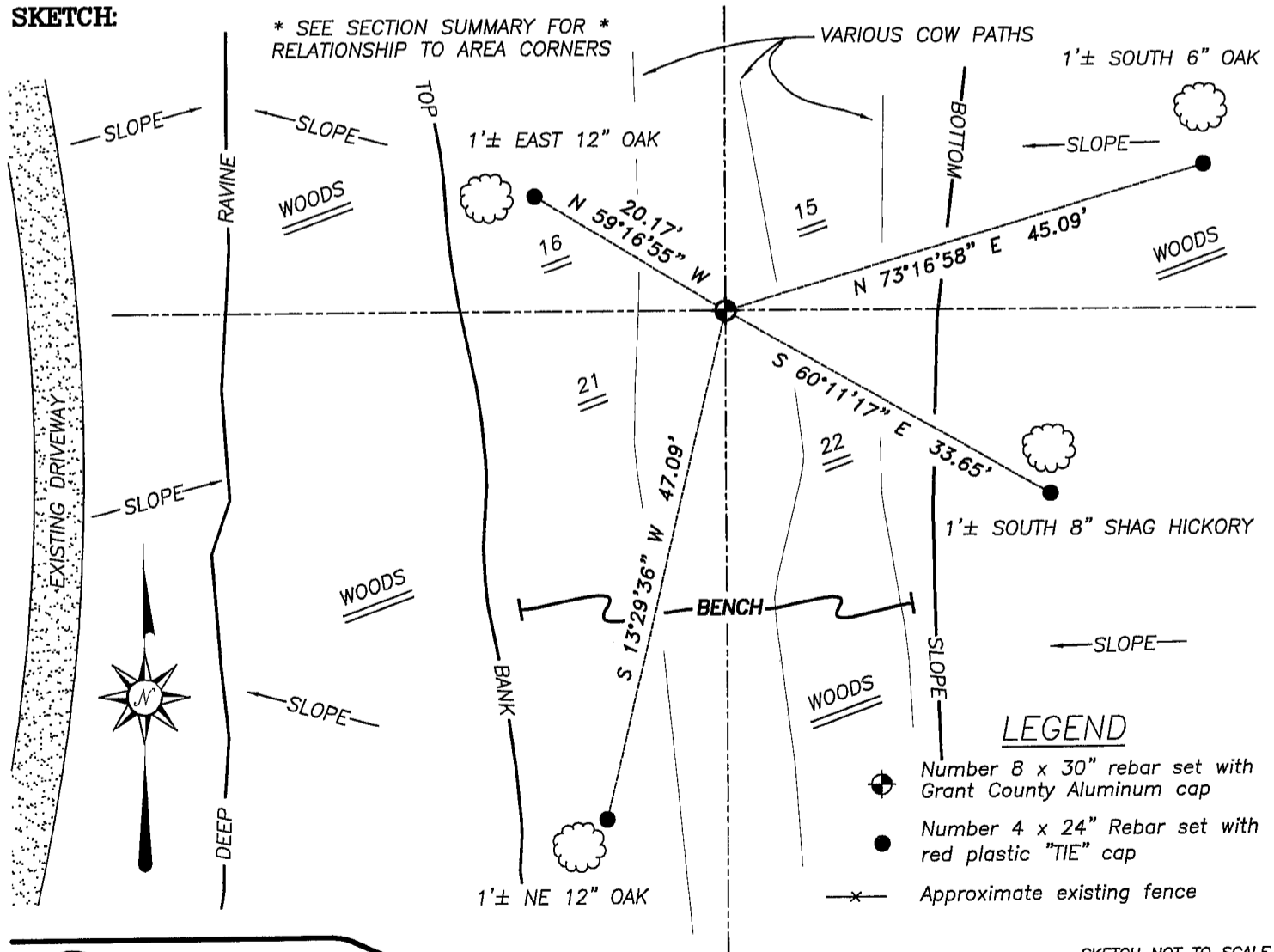
Corner was originally set in 1833 by Harvey Parke.
No other record of the corner was found.

DESCRIPTION OF CORNER EVIDENCE FOUND

I reset the corner at a projection of the fence from the West for Northing. The Easting was established proportionately between the South 1/4 of Section 16 and South 1/4 of 15. Verified this location using EDM & GPS methods.

DESCRIPTION OF CORNER AND WITNESS MONUMENTS, references and accessories used to perpetuate the original or re-established location of this corner. Witnesses to corner location Bobby Sedgwick & Brad Digman & Shane Austin

SKETCH:



Austin Engineering LLC

4211 HWY 81 E, LANCASTER, WI 53813
PHONE 608-723-6363 FAX 608-723-6702

JOB NUMBER 06S001
FIELDBOOK: TDSR, 2209
G:\T7NR2W\16A
H:\TIE\T7NR2W\67

DRAWN BY: SW AUSTIN
APPROVED: LL AUSTIN