

MAR 28 1995

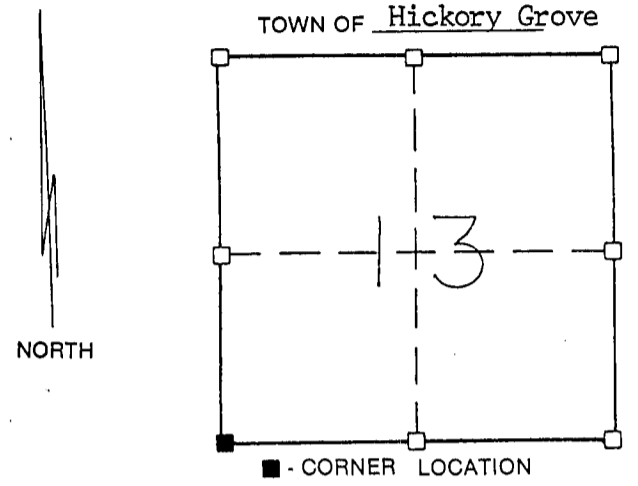
GOVERNMENT CORNER RECORD

Southwest CORNER, SECTION 13, TOWNSHIP 7 NORTH, RANGE 2 EAST - WEST,
TOWN, CITY OR VILLAGE OF Hickory Grove
TYPE OF MONUMENT: 3/4" x 24" Iron Rod Placed ELEVATION - M.S.L. DATUM _____

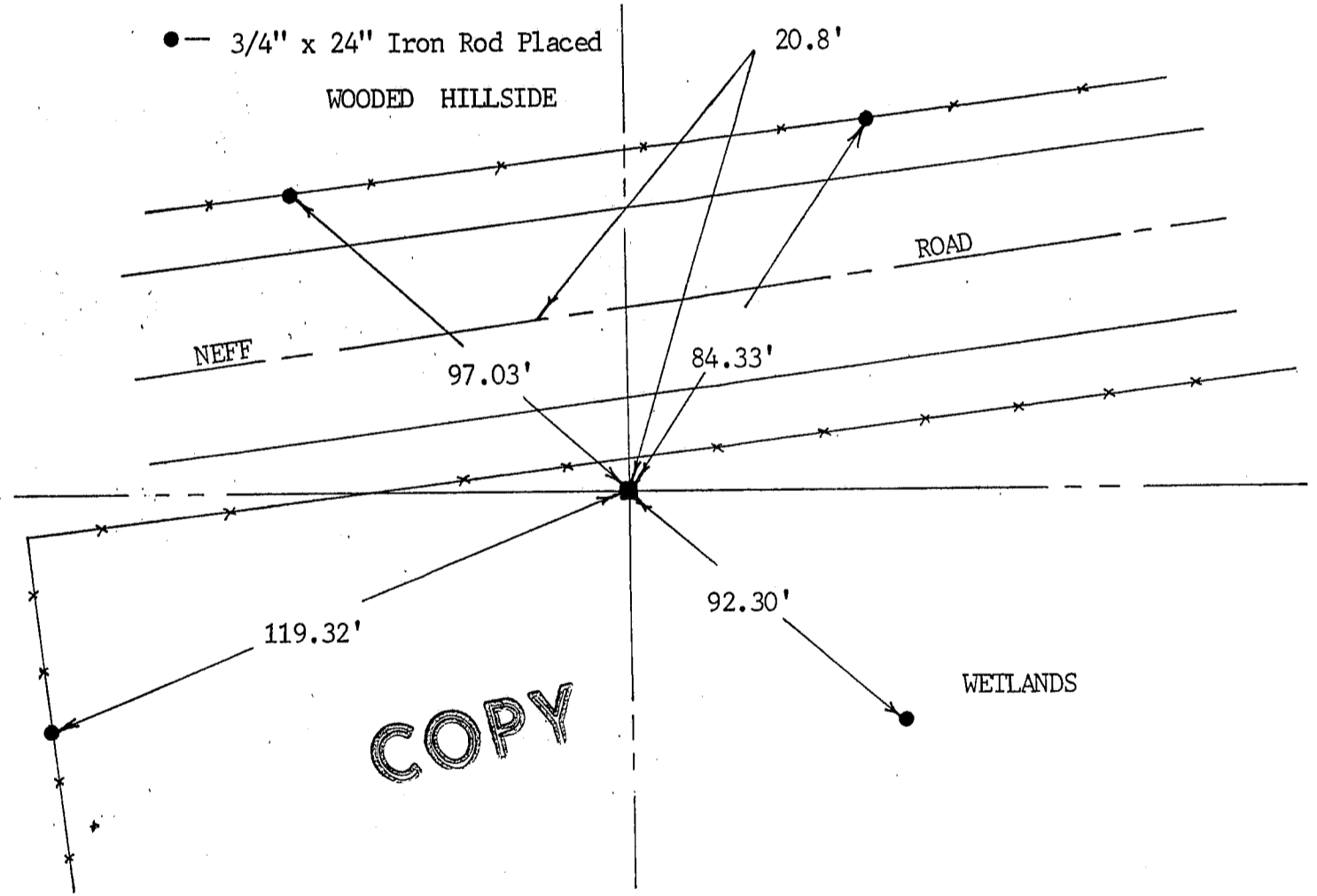
WITNESSES TO CORNER LOCATION

Sean M. Walsh
Christopher G. Reedy
Curtis J. Cummer

SECTION 13, T. 7 N, R. 2 EW
TOWN OF Hickory Grove



TIE SKETCH
(SHOW ALL HELPFUL FEATURES)



SURVEYOR'S CERTIFICATE

SEAL S- 2016

I, Sean M. Walsh, DO HEREBY CERTIFY THAT I have established this corner at a location which is at the projected occupied lines from the North, South and East from the monumented corners in those respective directions. This information is correct and true to the best of my knowledge, information and belief.

DATED THIS 15 DAY OF MARCH, 1995

Sean M. Walsh
REGISTERED LAND SURVEYOR

