

MAR 28 1995

GOVERNMENT CORNER RECORD

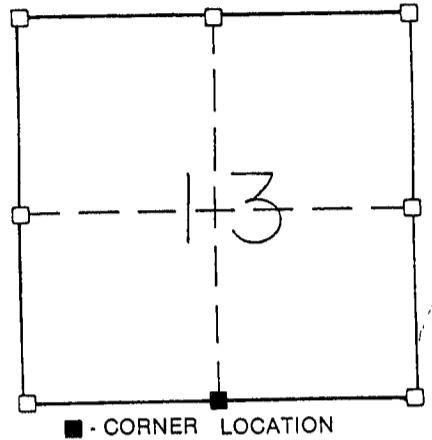
South 1/4 CORNER, SECTION 13, TOWNSHIP 7 NORTH, RANGE 2 EAST-WEST,
TOWN, CITY OR VILLAGE OF Hickory Grove
TYPE OF MONUMENT: 3/4" x 24" Iron Rod Placed ELEVATION - M.S.L. DATUM _____

SECTION 13, T 7 N, R 2 EW
TOWN OF Hickory Grove

WITNESSES TO CORNER LOCATION

Sean M. Walsh

Christopher G. Reedy

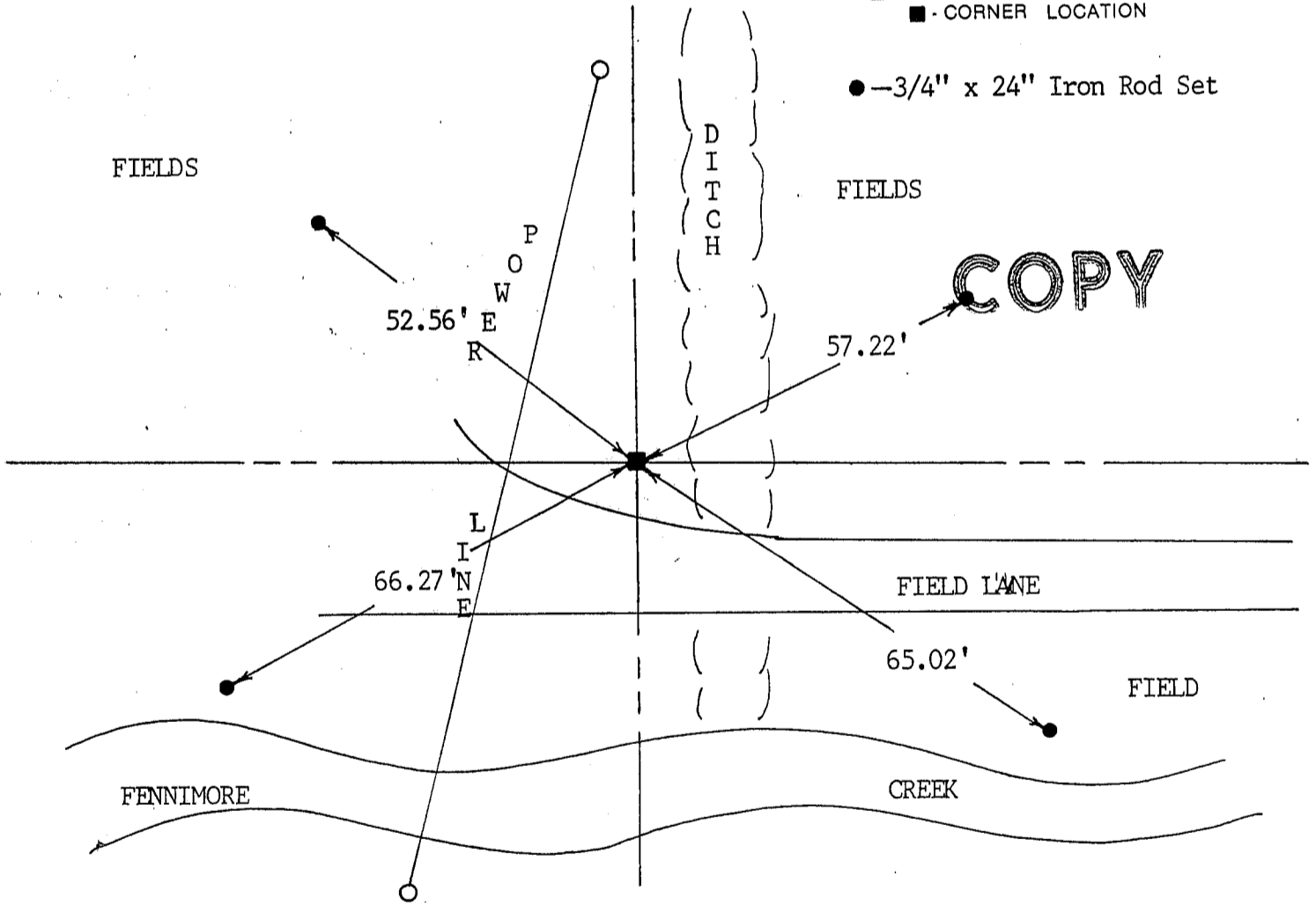


TIE SKETCH
(SHOW ALL HELPFUL FEATURES)

FIELDS

FIELDS

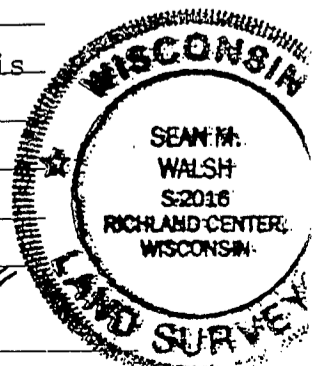
COPY



SURVEYOR'S CERTIFICATE

SEAL S- 2016

I, Sean M. Walsh, DO HEREBY CERTIFY THAT I have established this corner at a location where I found the remains of an old fence post. this location fits well with the remainder of Section 13, thus I accepted it as the best available evidence. This information is correct and true to the best of my knowledge and belief.



DATED THIS 15 DAY OF MARCH, 19 95

Sean M. Walsh
REGISTERED LAND SURVEYOR