

MAR 28 1995

GOVERNMENT CORNER RECORD

SOUTHEAST CORNER, SECTION 13, TOWNSHIP 7 NORTH, RANGE 2 EAST - WEST,

TOWN, CITY OR VILLAGE OF HICKORY GROVE

TYPE OF MONUMENT: 3/4" X 24" IRON ROD ELEVATION - M.S.L. DATUM

WITNESSES TO CORNER LOCATION

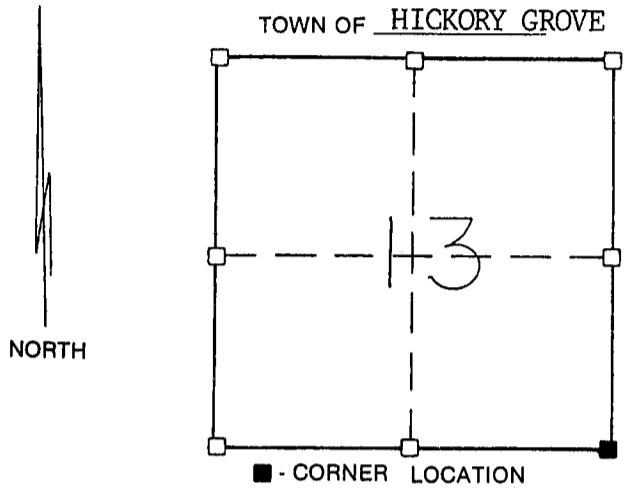
Christopher G. Reedy

Curtis J. Cumber

Sean M. Walsh

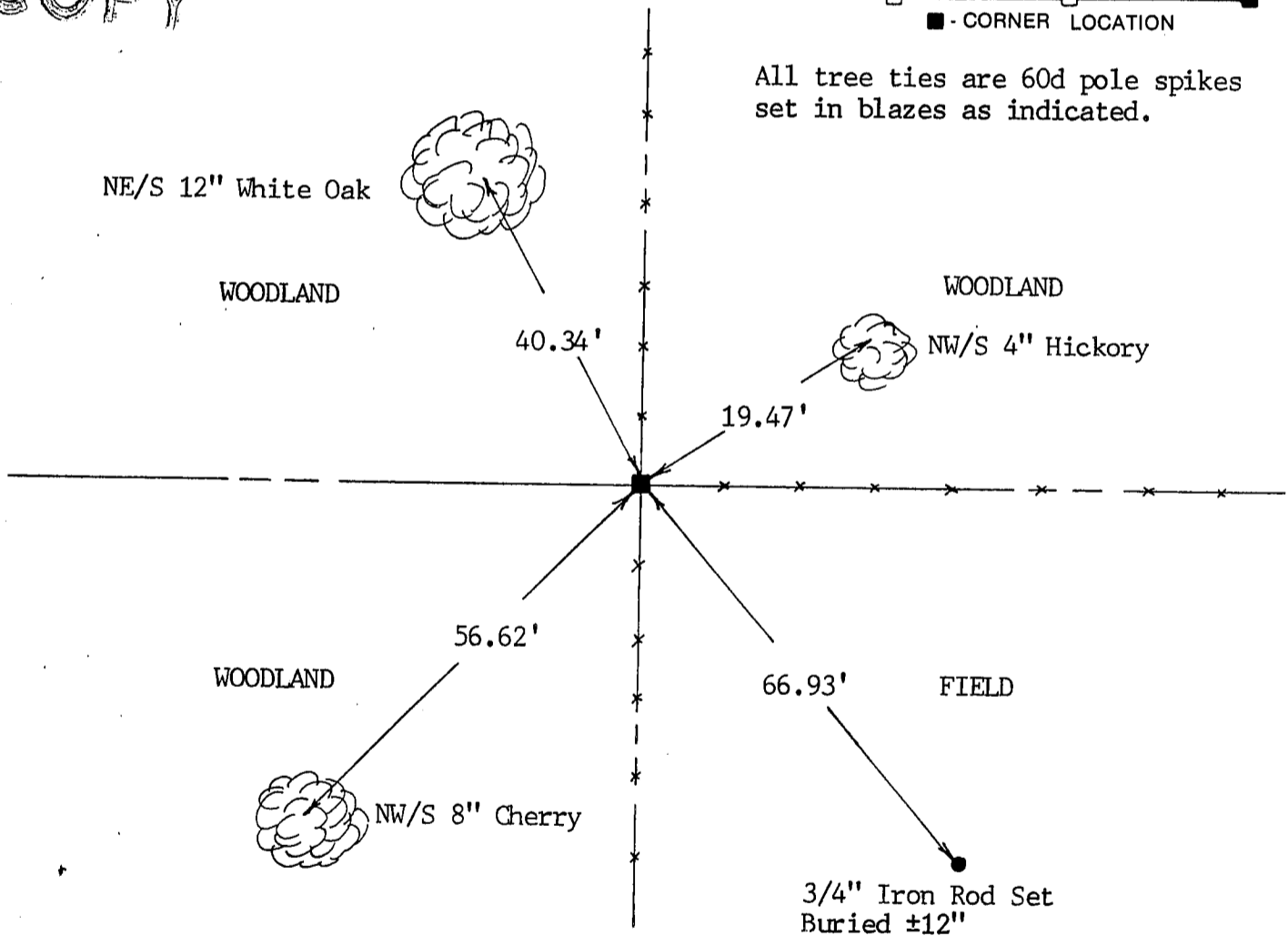
SECTION 13, T 7 N, R 2 EW

TOWN OF HICKORY GROVE



TIE SKETCH (SHOW ALL HELPFUL FEATURES)

COPY

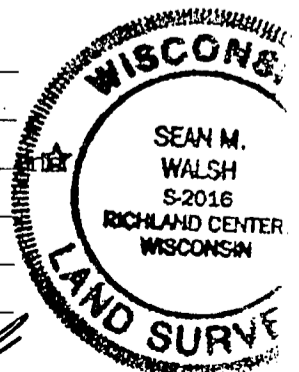


All tree ties are 60d pole spikes set in blazes as indicated.

SURVEYOR'S CERTIFICATE

SEAL S. 2016

I, Sean M. Walsh, DO HEREBY CERTIFY THAT I have established this corner at the location of physical occupation as it provides the only acceptable evidence of this corner location. This information is correct true to the best of my knowledge, information and belief.



DATED THIS 15 DAY OF MARCH, 1995

REGISTERED LAND SURVEYOR