

MAR 28 1995

GOVERNMENT CORNER RECORD

NORTH 1/4 CORNER, SECTION 13, TOWNSHIP 7 NORTH, RANGE 2 EAST - WEST,

TOWN, CITY OR VILLAGE OF HICKORY GROVE

TYPE OF MONUMENT: 3/4" X 24" IRON ROD

ELEVATION - M.S.L. DATUM _____

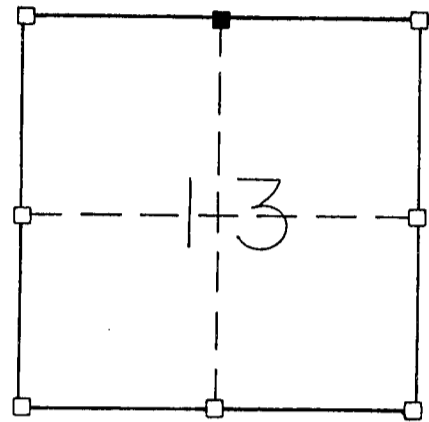
WITNESSES TO CORNER LOCATION

Sean M. Walsh

Christopher G. Reedy

SECTION 13, T. 7 N, R. 2 EW

TOWN OF HICKORY GROVE



TIE SKETCH
(SHOW ALL HELPFUL FEATURES)

All tree ties are 60d pole spikes set in blazes as indicated.

SW/S 14" White Oak



44.81'

77.52'



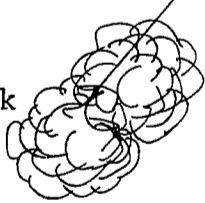
3/4" Iron Rod Set
W/S 14" Black Walnut

WOODLAND

COPY

62.70'

NW/S 16" Twin White Oak



WOODLAND

56.11'

SW/S 13" White Oak



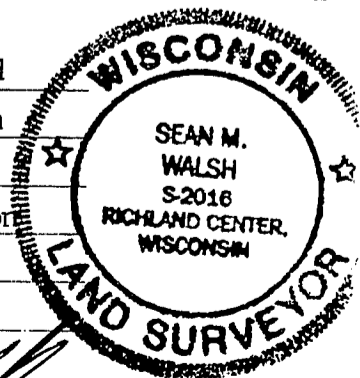
WOODLAND

RAVINE

SURVEYOR'S CERTIFICATE

SEAL S. 2016

I, Sean M. Walsh, DO HEREBY CERTIFY THAT I have monumented and perpetuated this corner according to the information contained hereon and that such information is correct and true to the best of my knowledge and belief. I accepted this location of physical occupation as the best available evidence. No other acceptable evidence was located, record or physical.



DATED THIS 15 DAY OF MARCH, 19 95

Sean M. Walsh
REGISTERED LAND SURVEYOR