

U.S. PUBLIC LAND SURVEY MONUMENT RECORD

(As Required By s. A-E 7.08, WI Adm. Code)

History of original corner establishment and subsequent restorations and description of any record, monument, occupational, testimonial or other evidence considered: *I found no survey records of this corner since the original government record. The corner was obliterated long ago. I computed the corner at 1/2 the distance on line between adjacent corners on the town line.*

Corner was: (Check All That Apply)

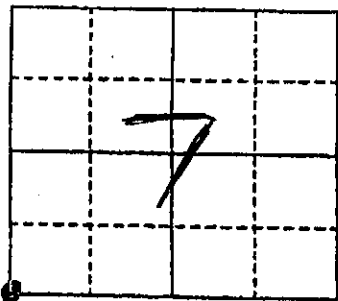
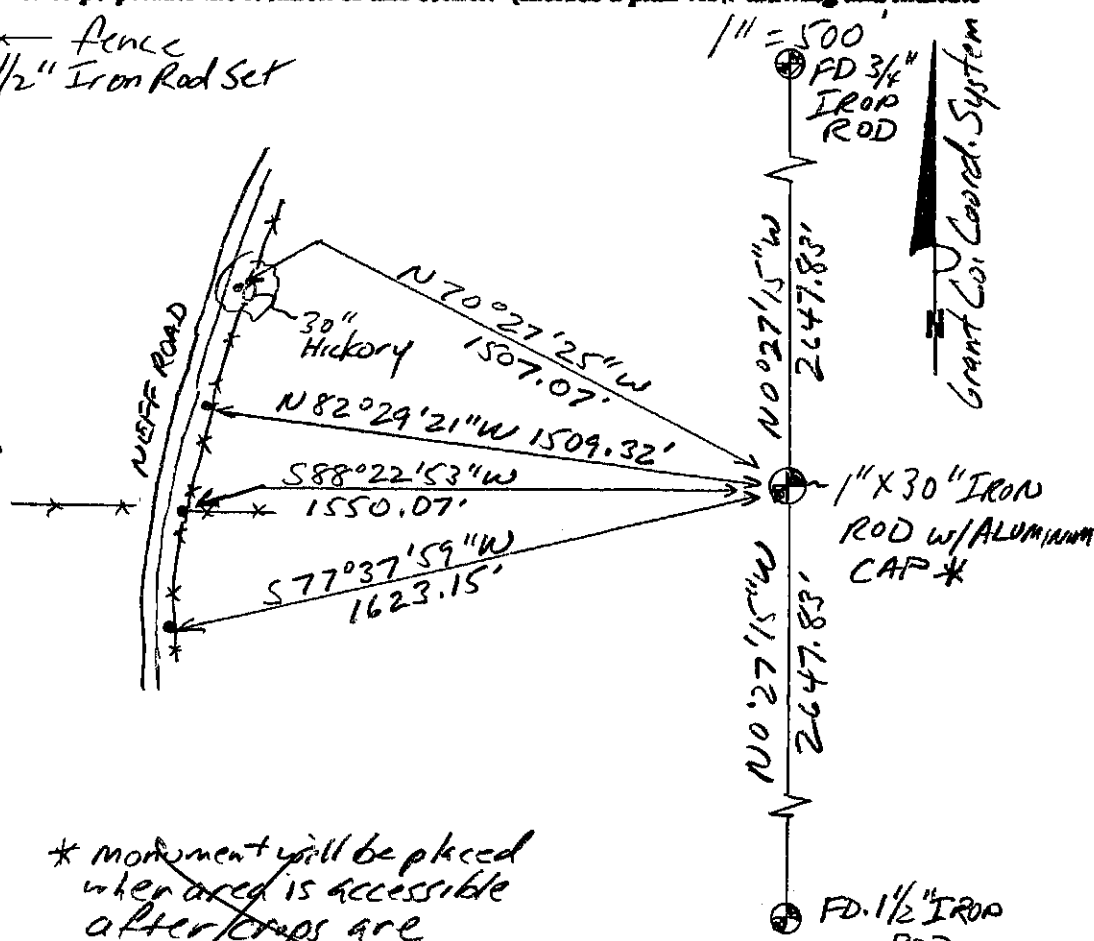
- Restored through acceptance of an obliterated evidence location
- Restored through acceptance of a found perpetuated location
- Considered a lost corner and reestablished through lost corner proportionate methods (include a plan view drawing showing distances and directions to other Public Land Survey Corners used for proportioning and determining the corner location)
- Restored or reestablished in a location that differs from a previous restoration or reestablishment (include a plan view drawing and indicate what was set and/or found)

Describe the monument and accessories used to perpetuate the location of this corner. (Include a plan view drawing and indicate what was set and/or found)

Grant Co. Coords
 (N) 611775.93
 (E) 862537.26

*x x x Fence
 • 1/2" Iron Rod Set*

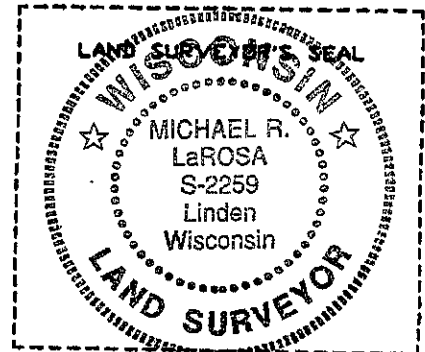
The SW
 corner of Section 7
 T. 7 N., R. 1 W
Grant County, Wisconsin
 Job ID: 2003-38
 Book # 6



** monument will be placed when area is accessible after crops are harvested.
 set & revised 10/15/03
 MRZ*

● = Location of Corner

Michael R. LaRosa
 Type or print name) certify that the corner location shown on this record was determined by me or under my direction and control and that this U.S. Public Land Survey Monument Record is correct and complete to the best of my knowledge and belief.



Michael R. LaRosa 8/21/2003
 Signature Date

Index No. 53

OCT 16 2003