

U.S. PUBLIC LAND SURVEY MONUMENT RECORD

(As Required By s. A-E 7.08, WI Adm. Code)

History of original corner establishment and subsequent restorations and description of any record, monument, occupational, testimonial or other evidence considered:

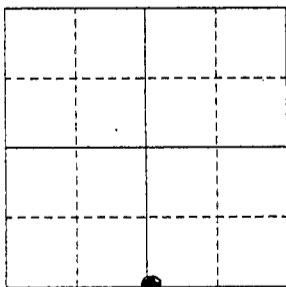
HISTORY IS THE ORIG. GOVT SURVEY & SURVEY BY CLARK DATED 1854
 FOUND NO MONUMENT, BUT A 4 WAY FENCE INTERSECTION EXISTS AT
 THE CORNER. ACCEPTED THE FENCE INTERSECTION AFTER AN EDM
 & GPS TRAVERSE OF SECTIONS 10 & 15 FOR PHYSICAL EVIDENCE

Corner was: (Check All That Apply)

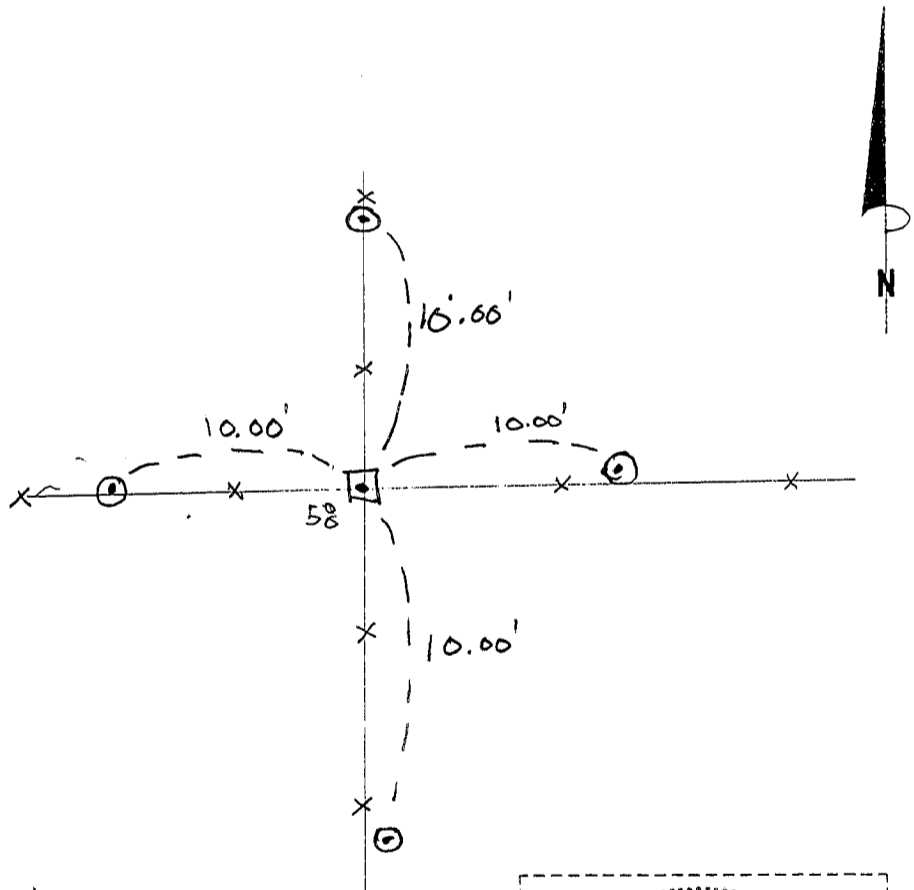
- Restored through acceptance of an obliterated evidence location
- Restored through acceptance of a found perpetuated location
- Considered a lost corner and reestablished through lost corner proportionate methods (include a plan view drawing showing distances and directions to other Public Land Survey Corners used for proportioning and determining the corner location)
- Restored or reestablished in a location that differs from a previous restoration or reestablishment (include a plan view drawing and indicate what was set and /or found)

Describe the monument and accessories used to perpetuate the location of this corner. (Include a plan view drawing and indicate what was set and/or found)

The S 1/4 COR
 corner of Section 10
 T. 7 N., R. 2 W E.,
GRANT County, Wisconsin
 Job ID: 2000S-77
 Book # 2000.4 p. 19

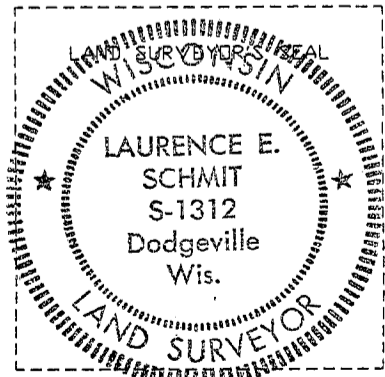


● = Location of Corner



LEGEND

- SET 7/8" x 24" REBAR WITH GRANT CO. ALUM. CAP
- x— FENCE
- 1/2" IRON PIPE SET



I, LAURENCE E. SCHMIT
 Type or print name) certify that the corner location shown on this record was determined by me or under my direction and control and that this U.S. Public Land Survey Monument Record is correct and complete to the best of my knowledge and belief.

Laurence E. Schmit 8-17-2000
 Signature Date

Index No. 46