

# GRANT COUNTY CERTIFIED LAND CORNER

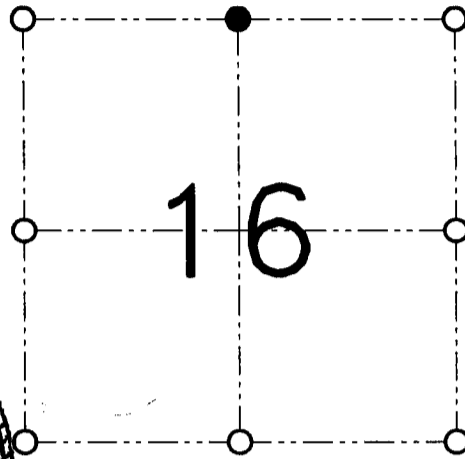
CORNER NUMBER 48

**CERTIFICATE:**

I, Larry L. Austin, do hereby certify that on the 20th day of February, 2001, I found no evidence of the North 1/4 corner of Section 16, Town 7 North, Range 2 West, of the 4th Principal Meridian, and I re-established said corner according to the Wisconsin statutes as shown and described hereon.

Dated this 26th day of February, 2001

*Larry L. Austin*  
Larry L. Austin, S-1903



● = CORNER LOCATION  
NORTH 1/4 CORNER OF SECTION 16, T 7 N R 2 W TOWN OF HICKORY GROVE

**HISTORY OF ORIGINAL CORNER ESTABLISHMENT:**

Corner was originally set in 1833 by Harvey Parke.  
No other record of the corner was found.

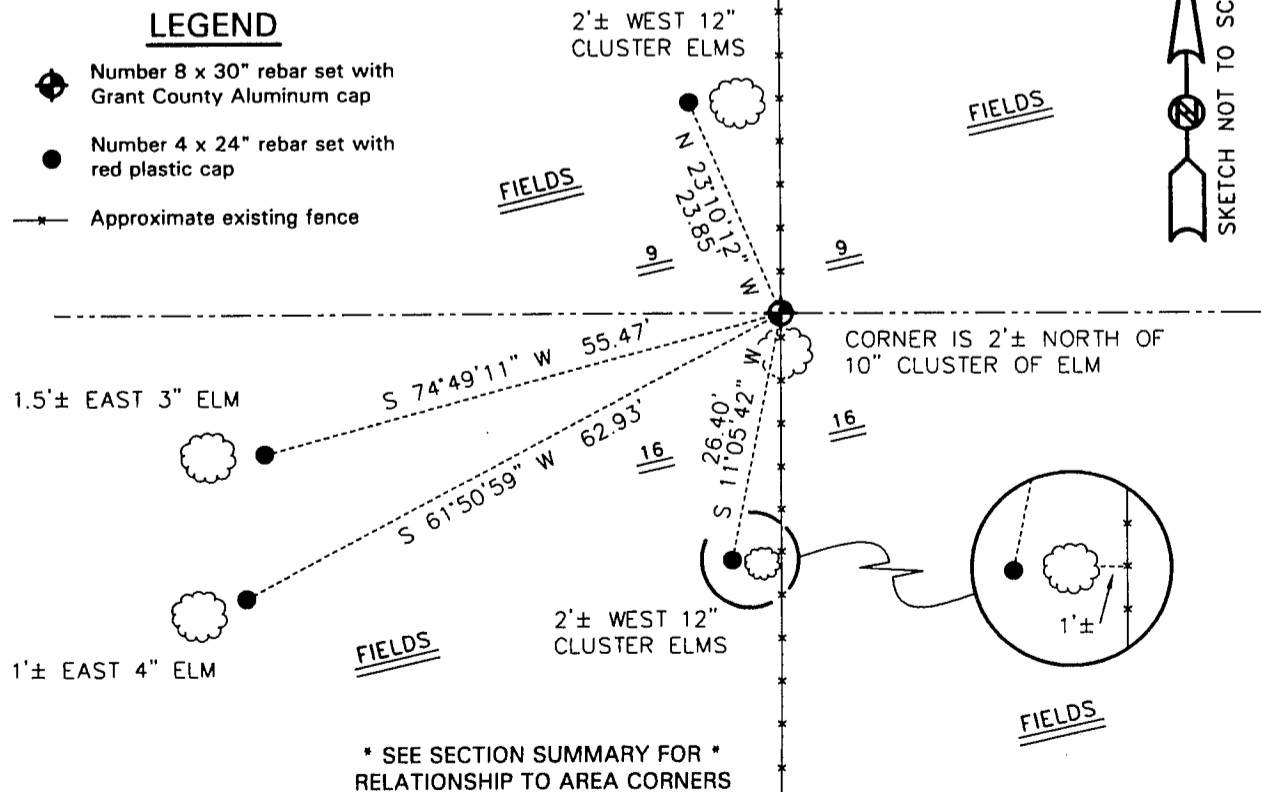
**DESCRIPTION OF CORNER EVIDENCE FOUND:**

I reset the corner online between the Northwest and Northeast corners of Section 16 for Northing. Easting was established in a North-South fence. Verified this location using EDM & GPS methods.

**DESCRIPTION OF CORNER AND WITNESS MONUMENTS**

references and accessories used to perpetuate the original or re-established location of this corner.  
WITNESS TO THE CORNER LOCATION: SHANE AUSTIN & SHELBY BLINDERT & BOBBY SEDGWICK

**SKETCH:**



**AUSTIN ENGINEERING, LLC**  
4211 HWY 81 E, LANCASTER, WI 53813  
PHONE 608-723-6363 FAX 608-723-6702

FIELDBOOK: SDR33, 2042  
G:\T7NR2W\02  
G:\SWA\TIE\T7NR2W\48

DRAWN BY: SW AUSTIN  
APPROVED: LL AUSTIN  
CREW: BS-SB-SA-TF  
SHEET 1 OF 1

JUN 14 2001