

GRANT COUNTY CERTIFIED LAND CORNER

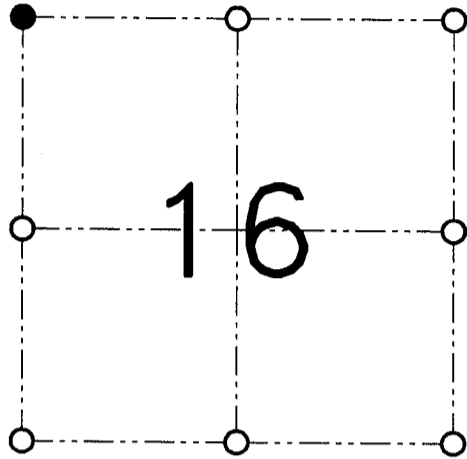
CORNER NUMBER 49

CERTIFICATE:

I, Larry L. Austin, do hereby certify that on the 21st day of February, 2001, I found no evidence of the Northwest corner of Section 16, Town 7 North, Range 2 West, of the 4th Principal Meridian, and I re-established said corner according to the Wisconsin statutes as shown and described hereon.

Dated this 27th day of February, 2001

Larry L. Austin
Larry L. Austin, S-1903



● = CORNER LOCATION

NORTHWEST CORNER OF SECTION 16, T 7 N R 2 W TOWN OF HICKORY GROVE

HISTORY OF ORIGINAL CORNER ESTABLISHMENT:

Corner was originally set in 1833 by Harvey Parke.
In 1992 I set a Number 7 iron bar with Aluminum Cap.

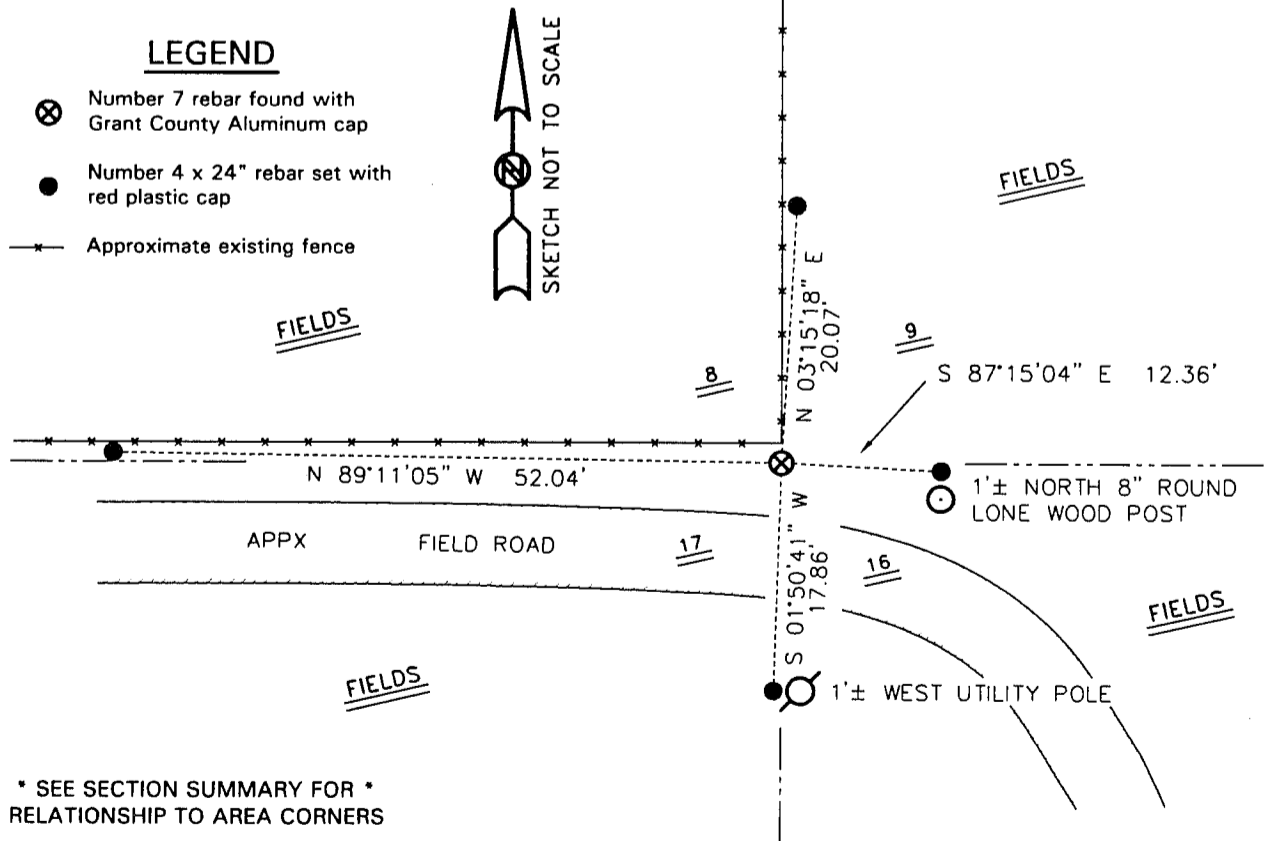
DESCRIPTION OF CORNER EVIDENCE FOUND:

I found the existing Number 7 iron bar with Aluminum Cap and accepted it's location after an EDM & GPS traverse of the area.

DESCRIPTION OF CORNER AND WITNESS MONUMENTS

references and accessories used to perpetuate the original or re-established location of this corner.
WITNESS TO THE CORNER LOCATION: SHANE AUSTIN & SHELBY BLINDERT & BOBBY SEDGWICK

SKETCH:



* SEE SECTION SUMMARY FOR *
RELATIONSHIP TO AREA CORNERS

AUSTIN ENGINEERING, LLC
4211 HWY 81 E, LANCASTER, WI 53813
PHONE 608-723-6363 FAX 608-723-6702

FIELDBOOK: SDR33, 2042
G:\T7NR2W\02
G:\SWA\TIE\T7NR2W\49

DRAWN BY: SW AUSTIN
APPROVED: LL AUSTIN
CREW: BS-SB-SA-TF
SHEET 1 OF 1

JUN 14 2001