

GRANT COUNTY CERTIFIED LAND CORNER

CORNER NO. 17

CERTIFICATE:

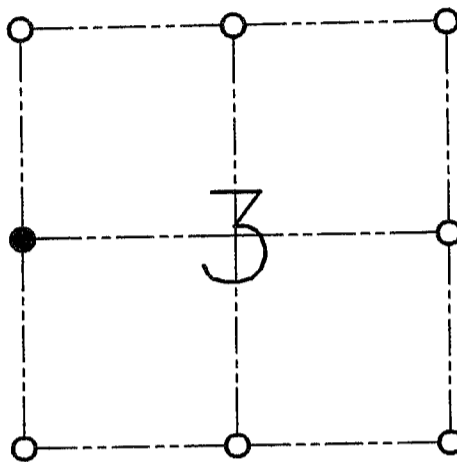
I, LARRY L. AUSTIN, DO HEREBY CERTIFY THAT ON FIFTEENTH DAY OF MARCH, 1999, I FOUND OCCUPATIONAL EVIDENCE OF THE WEST 1/4 CORNER SECTION 3, TOWN 7 NORTH, RANGE 2 WEST, OF THE FOURTH PRINCIPAL MERIDIAN, AND I RE-ESTABLISHED SAID CORNER ACCORDING TO THE WISCONSIN STATUTES AS SHOWN AND DESCRIBED HEREON.

DATED THIS TWENTY-SIXTH DAY OF MARCH, 1999

Larry L. Austin
LARRY L. AUSTIN S-1903



SEAL



● = CORNER LOCATION

WEST 1/4 CORNER OF
SECTION 3, T 7 N R 2 W
TOWN OF HICKORY GROVE

HISTORY OF ORIGINAL CORNER ESTABLISHMENT:

CORNER WAS SET IN 1832 BY HARVEY PARKE.

DESCRIPTION OF CORNER EVIDENCE FOUND:

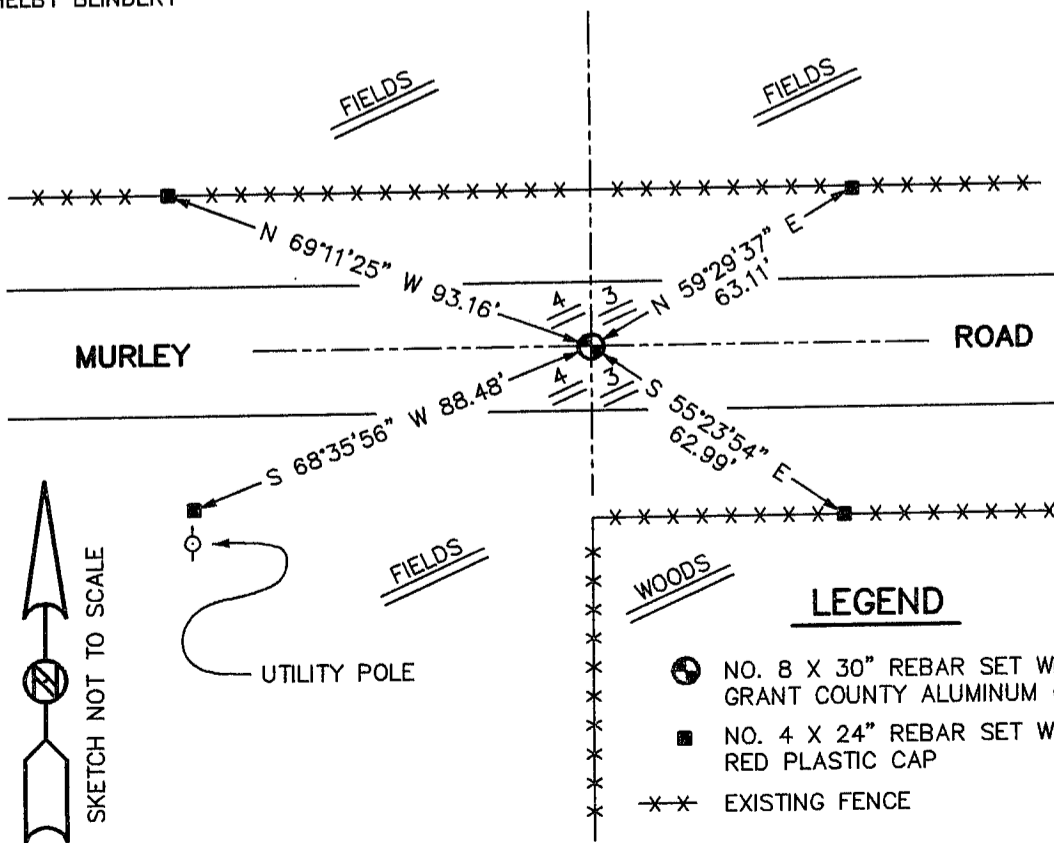
I SET THE CORNER AT AN OCCUPIED LOCATION.
VERIFIED THIS LOCATION USING E.D.M. AND G.P.S. METHODS.

DESCRIPTION OF CORNER AND WITNESS MONUMENTS, REFERENCES AND ACCESSORIES USED TO PERPETUATE THE ORIGINAL OR RE-ESTABLISHED LOCATION OF THIS CORNER:

WITNESS TO THE CORNER LOCATION:

BOBBY SEDGWICK
SHELBY BLINDERT

SKETCH:



LEGEND

- NO. 8 X 30" REBAR SET WITH GRANT COUNTY ALUMINUM CAP
- NO. 4 X 24" REBAR SET WITH RED PLASTIC CAP
- x-x- EXISTING FENCE