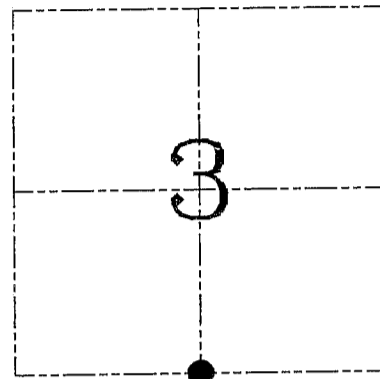
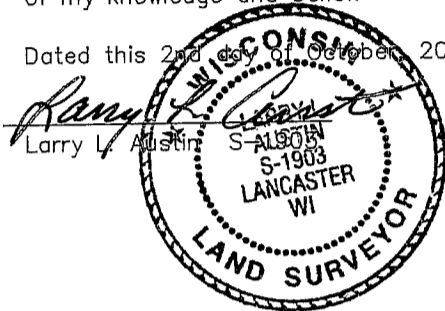


**U.S. PUBLIC LAND SURVEY MONUMENT RECORD – GRANT COUNTY, WI**  
**Section 3, Town 7 North Range 2 West, Town of Hickory Grove**

**CERTIFICATE**

I, Larry L. Austin, do hereby certify that the corner location on this record was determined by me and/or under my direct supervision and that this U.S. public land survey monument record is correct and complete to the best of my knowledge and belief.

Dated this 2nd day of October, 2003



● = CORNER LOCATION

**HISTORY OF CORNER ESTABLISHMENT**

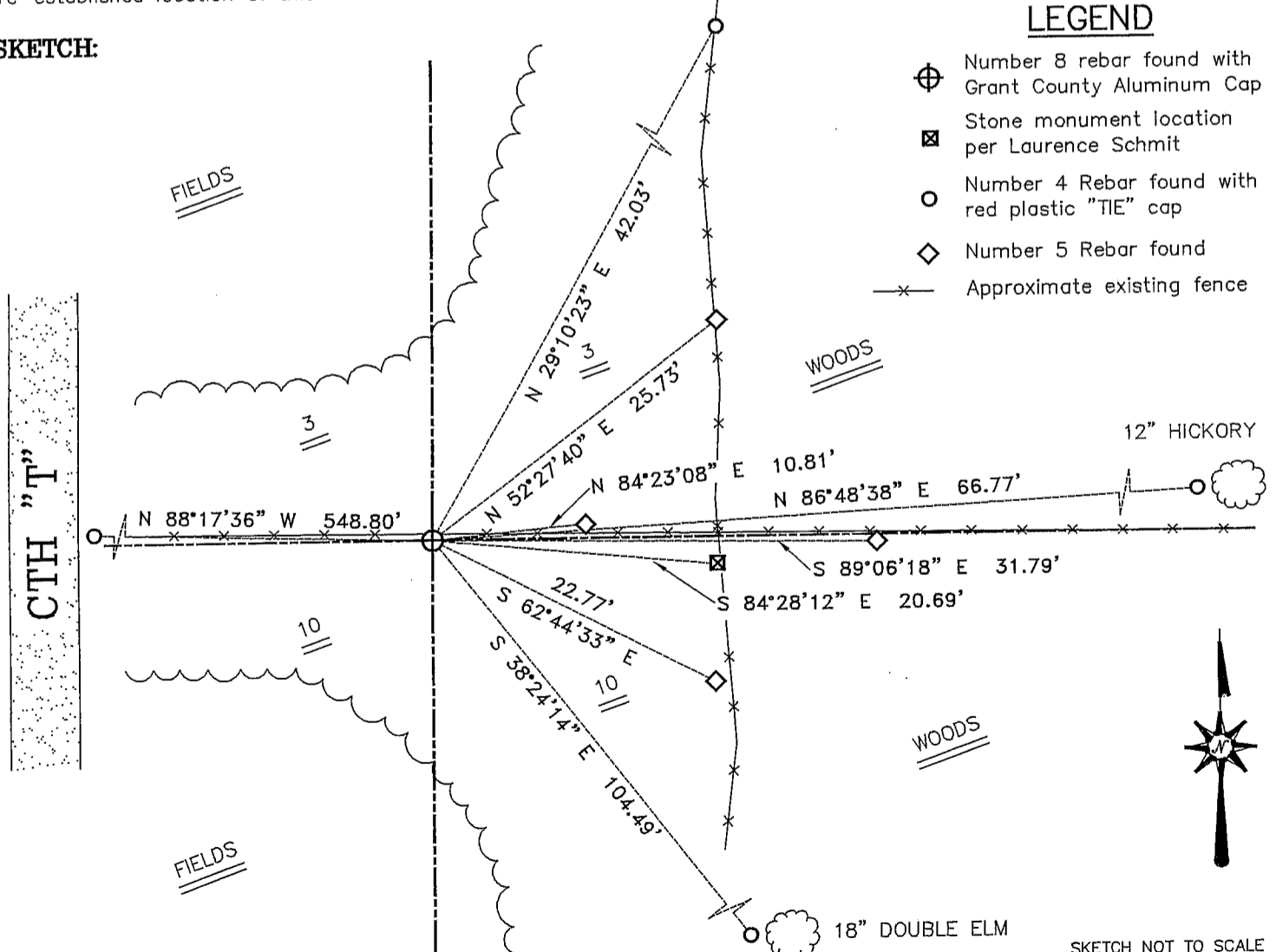
Corner was originally set in 1833 by Parke.  
 In 1854 Clark measured to the corner.  
 In 2000 Schmit found a stone and accepted it.

**DESCRIPTION OF CORNER EVIDENCE FOUND**

I set the corner proportionately between the Southwest and Southeast corners of Section 3. This location fit occupational evidence East-West and North of the corner. Verified this location using EDM & GPS methods.

**DESCRIPTION OF CORNER AND WITNESS MONUMENTS**, references and accessories used to perpetuate the original or re-established location of this corner. Witnesses to corner location Bobby Sedgwick & Shane Austin & Brad Digman

**SKETCH:**



**LEGEND**

- ⊕ Number 8 rebar found with Grant County Aluminum Cap
- ⊠ Stone monument location per Laurence Schmit
- Number 4 Rebar found with red plastic "TIE" cap
- ◇ Number 5 Rebar found
- x— Approximate existing fence

SKETCH NOT TO SCALE

**AUSTIN ENGINEERING, LLC**  
 4211 HWY 81 EAST, LANCASTER, WI 53813  
 PHONE 608-723-6363 FAX 608-723-6702

FIELDBOOK: TDS RNGR, 9825B, 2308  
 G: \T7NR2W\26DOT  
 H: \TIE\T7NR2W\26  
 JOB NUMBER 03S128

DRAWN BY: SW AUSTIN  
 APPROVED: LL AUSTIN

**CORNER NUMBER 26**

**U.S. PUBLIC LAND SURVEY MONUMENT RECORD**

(As Required By s. A-E 7.08, WI Adm. Code)

History of original corner establishment and subsequent restorations and description of any record, monument, occupational, testimonial or other evidence considered:

HISTORY IS THE ORIGINAL GOVT. SURVEY & SURVEY OF CLARK DATED 1854  
I FOUND AND ACCEPTED A STONE OF UNKNOWN ORIGIN FOUND AT THE CORNER

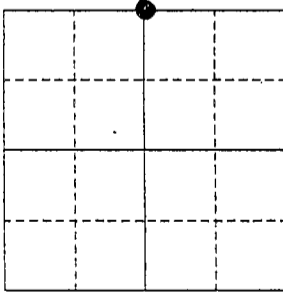
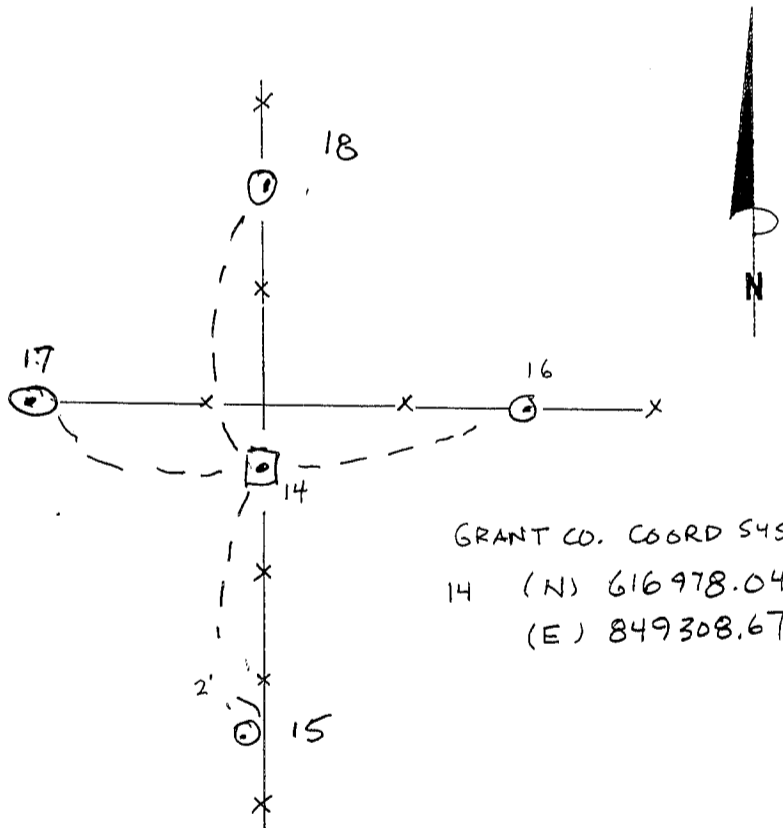
Corner was: (Check All That Apply)

- Restored through acceptance of an obliterated evidence location
- Restored through acceptance of a found perpetuated location
- Considered a lost corner and reestablished through lost corner proportionate methods (include a plan view drawing showing distances and directions to other Public Land Survey Corners used for proportioning and determining the corner location)
- Restored or reestablished in a location that differs from a previous restoration or reestablishment (include a plan view drawing and indicate what was set and/or found)

Describe the monument and accessories used to perpetuate the location of this corner. (Include a plan view drawing and indicate what was set and/or found)

14-15 S 2° 55' 02" W 8.44  
14-16 N 82° 28' 11" E 11.15'  
14-17 N 73° 15' 09" W 10.30'  
14-18 N 00° 57' 33" W 17.59'

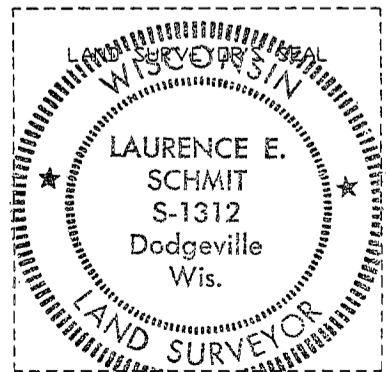
The N 1/4  
corner of Section 10  
T. 7 N., R. 2W #,  
GRANT County, Wisconsin  
Job ID: 2000S-77  
Book # 2600-3 p. 14



● = Location of Corner

**LEGEND**

- FOUND TRIANGULAR STONE
- FENCE
- SET 5/8" REBAR TIE



I, LAURENCE E. SCHMIT  
(Type or print name) certify that the corner location shown on this record was determined by me or under my direction and control and that this U.S. Public Land Survey Monument Record is correct and complete to the best of my knowledge and belief.

Laurence E. Schmit 8-17-2000  
Signature Date

Index No. 26