

U. S. PUBLIC LAND SURVEY MONUMENT RECORD

INSTRUCTIONS: This record shall show the location of the corner and shall include all of the following nine elements (a through i).

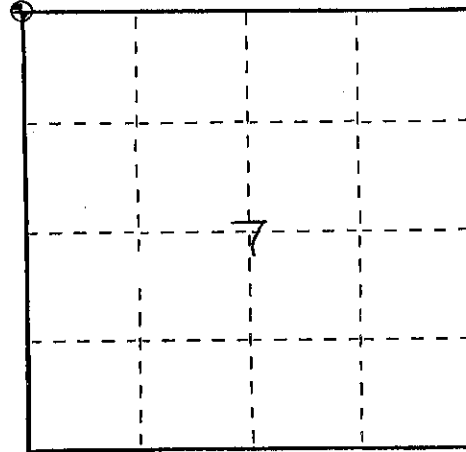
- (a) Identify the corner by reference to the U.S. public land survey system.
 ⊕ = Corner monument restored.

Northwest corner
 Section 7, Town 7 North, Range 1 East,
 Town of Highland

COUNTY COORDINATES

N 206092.21
 E 299244.86

Set 1½"x30" Solid Iron Rebar

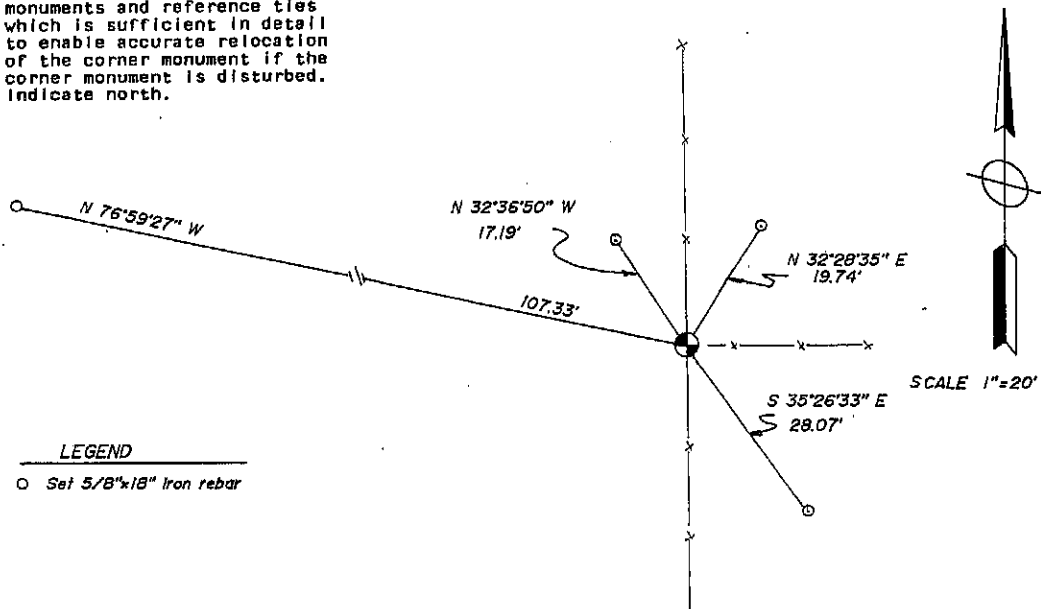


- (b) Describe any record evidence, monument evidence, occupational evidence, testimonial evidence or any other material evidence you considered, and whether the monument was found or placed.

I located an existing fence north-south-east at this corner. A Plat of Survey completed by David Davis in 1980 has a tie to this corner. Found no evidence of anything being set. I set a 1½"x30" solid iron rebar at fence location. Fit the tie from Davis survey very good.

- (c) In the plan view drawing below, provide reference ties to at least 4 witness monuments, or, if the location is within a municipality, to at least 2 witness monuments. (Witness monuments shall be made of concrete, natural stone, iron or other equally durable material.) Describe witness monuments.

- (d) Show a plan view drawing depicting the relevant monuments and reference ties which is sufficient in detail to enable accurate relocation of the corner monument if the corner monument is disturbed. Indicate north.



LEGEND

○ Set 5/8"x18" Iron rebar

U.S. PUBLIC LAND SURVEY MONUMENT RECORD

(As Required By s. A-E 7.08, WI Adm. Code)

History of original corner establishment and subsequent restorations and description of any record, monument, occupational, testimonial or other evidence considered:

A 2" Iron Pipe as set in a survey by Douglas Malliet dated 7/28/1987 and also noted in a revised survey, dated 12/29/87 and in surveys by Larry Austin (4/7/1999 & 8/19/1999) was found at the corner.

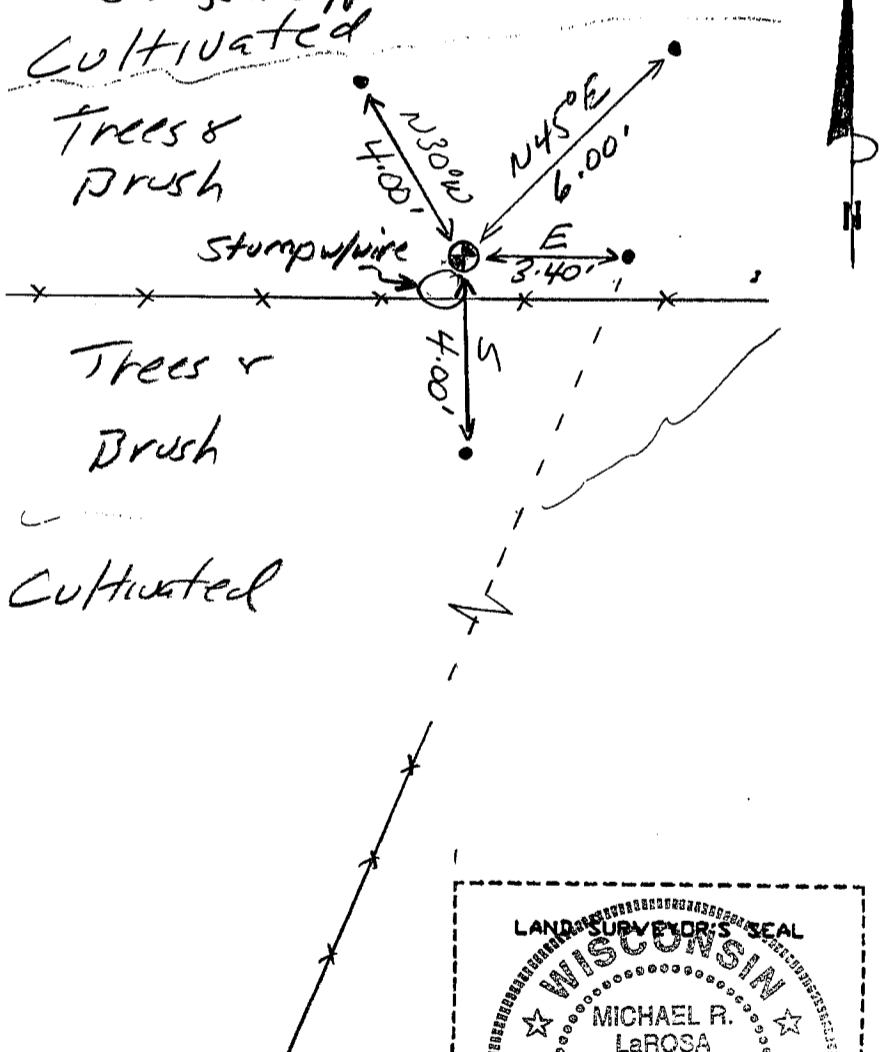
Corner was: (Check All That Apply)

- Restored through acceptance of an obliterated evidence location
- Restored through acceptance of a found perpetuated location
- Considered a lost corner and reestablished through lost corner proportionate methods (include a plan view drawing showing distances and directions to other Public Land Survey Corners used for proportioning and determining the corner location)
- Restored or reestablished in a location that differs from a previous restoration or reestablishment (include a plan view drawing and indicate what was set and /or found)

Describe the monument and accessories used to perpetuate the location of this corner. (Include a plan view drawing and indicate what was set and/or found)

Grant County Coordinates
(W) 617068.18
(E) 862491.95

• Pole Barn Spike Set
x x Fence
NOTE: Bearings are approximate



The NE

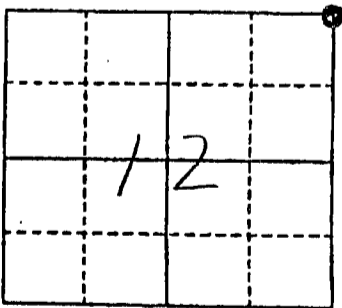
corner of Section 12

T. 7 N., R. 2 W.

Grant County, Wisconsin

Job ID: 2003-6

Book # L.L.



● - Location of Corner

Michael R. LaRosa

Type or print name) certify that the corner location shown on this record was determined by me or under my direction and control and that this U.S. Public Land Survey Monument Record is correct and complete to the best of my knowledge and belief.

Michael R. LaRosa 4/21/2003

Signature

Date



Index No. 21

MAY 23 2003