

U.S. PUBLIC LAND SURVEY MONUMENT RECORD – GRANT COUNTY, WI

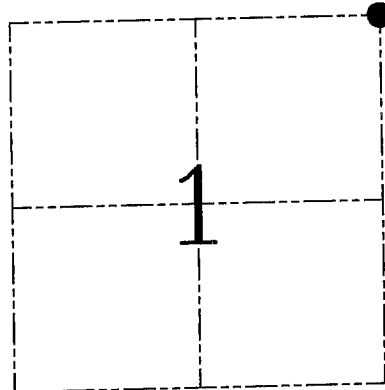
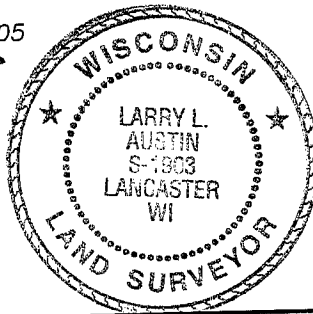
Section 1, Town 6 North Range 1 West, Town of Wingville

CERTIFICATE

I, Larry L. Austin, do hereby certify that the corner location on this record was determined by me and/or under my direct supervision and that this U.S. public land survey monument record is correct and complete to the best of my knowledge and belief.

Dated this 13th day of January, 2005

Larry L. Austin
Larry L. Austin S-1903



● = CORNER LOCATION

HISTORY OF CORNER ESTABLISHMENT

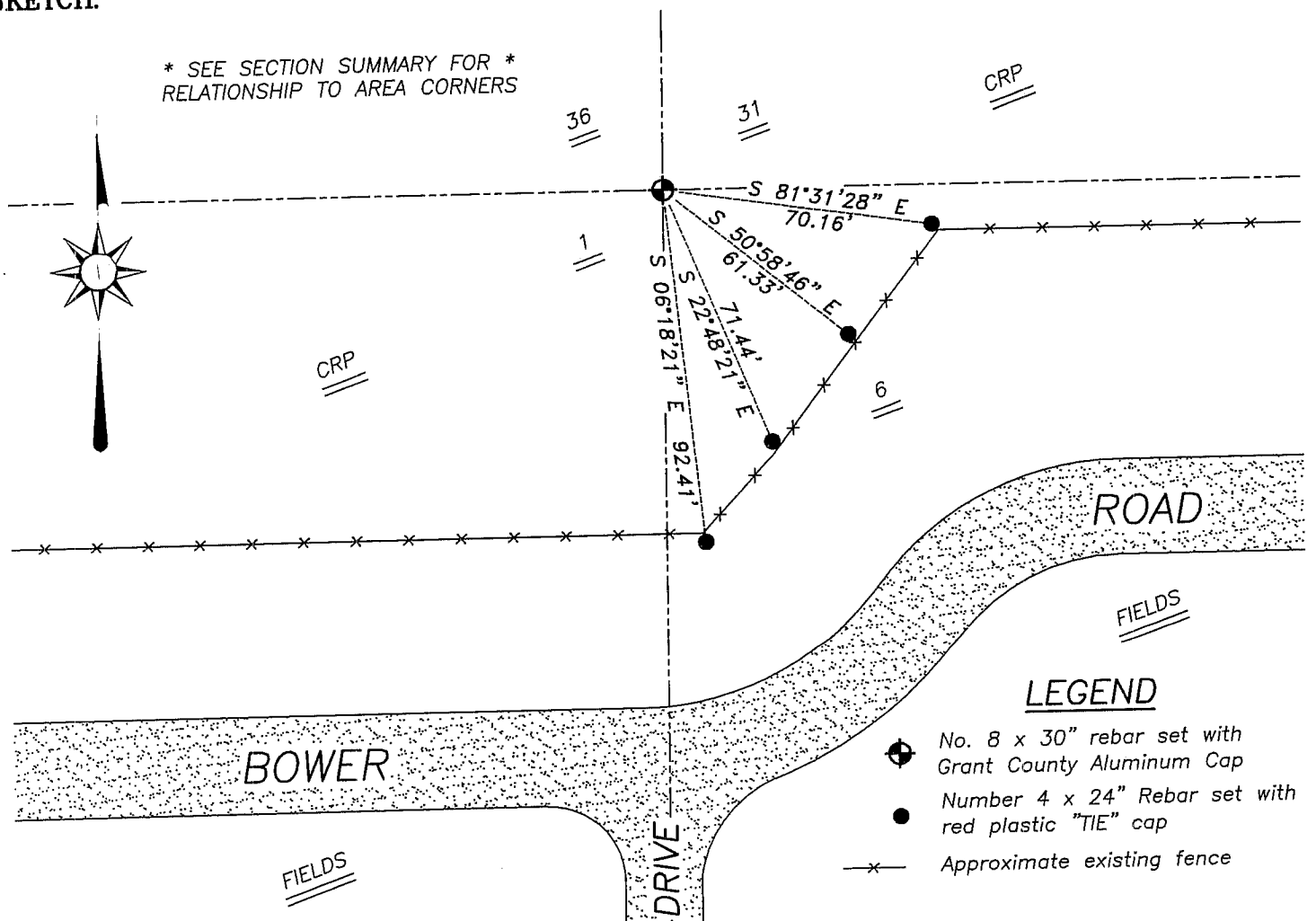
Corner was originally set in 1832 by Lyon. In 1870 Allen found the original corner. Various surveys were found in Iowa County records relating to this corner.

DESCRIPTION OF CORNER EVIDENCE FOUND

I reset the corner proportionately with the Allen survey and measured to corners East and North of this location. This location fit the Allen survey very well. Verified this location using EDM & GPS methods.

DESCRIPTION OF CORNER AND WITNESS MONUMENTS, references and accessories used to perpetuate the original or re-established location of this corner. Witnesses to corner location Bobby Sedgwick & Brad Digman & Shane Austin

SKETCH:



LEGEND

- No. 8 x 30" rebar set with Grant County Aluminum Cap
- Number 4 x 24" Rebar set with red plastic "TIE" cap
- x- Approximate existing fence

SKETCH NOT TO SCALE



Austin Engineering LLC

4211 HWY 81 E, LANCASTER, WI 53813
PHONE 608-723-6363 FAX 608-723-6702

JOB NUMBER: 05S288-ESSER
FIELDBOOK: TDSR, 2514
G:\T6NR1W\01
H:\TIE\T6NR1W\1

DRAWN BY: ML DIGMAN
APPROVED: LL AUSTIN