

U.S. PUBLIC LAND SURVEY MONUMENT RECORD – GRANT COUNTY, WI

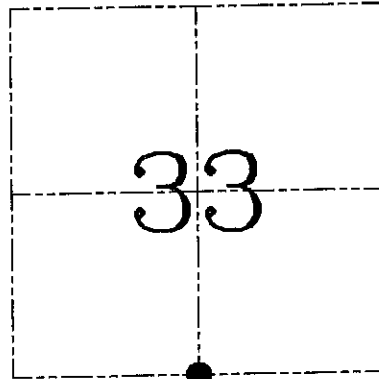
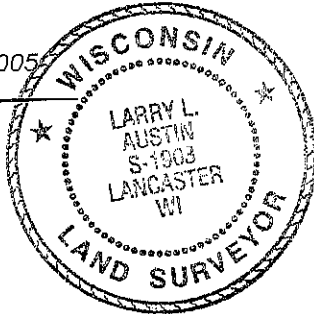
Section 33, Town 7 North Range 1 West, Town of Castle Rock

CERTIFICATE

I, Larry L. Austin, do hereby certify that the corner location on this record was determined by me and/or under my direct supervision and that this U.S. public land survey monument record is correct and complete to the best of my knowledge and belief.

Dated this 19th day of August, 2005

Larry L. Austin
Larry L. Austin S-1903



● = CORNER LOCATION

HISTORY OF CORNER ESTABLISHMENT

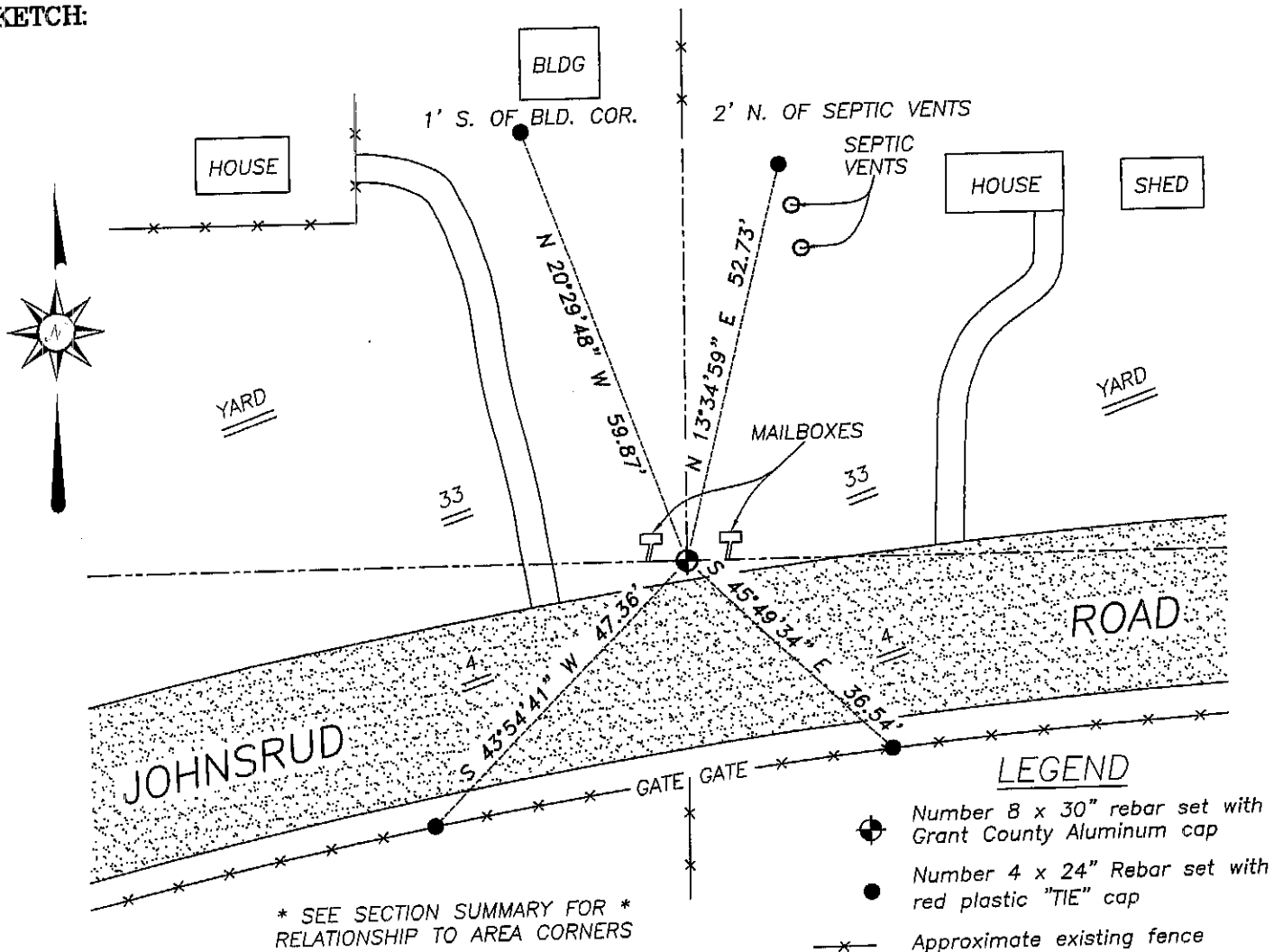
Corner was originally set in 1833 by Sibley. In 1868 Barber surveyed the section and found a stone monument at this location.

DESCRIPTION OF CORNER EVIDENCE FOUND

I was unable to locate the evidence of the stone monument. I reset the corner on-line with fence North for Easting. Northing was established on-line between the Southwest and Southeast corners. Verified this location using EDM & GPS methods.

DESCRIPTION OF CORNER AND WITNESS MONUMENTS, references and accessories used to perpetuate the original or re-established location of this corner. Witnesses to corner location Bobby Sedgwick & Brad Digman & Shane Austin

SKETCH:



SKETCH NOT TO SCALE



Austin
Engineering LLC

4211 HWY 81 E, LANCASTER, WI 53813
PHONE 608-723-6363 FAX 608-723-6702

JOB NUMBER 05s068
FIELDBOOK: TDSR
G:\T7NR1W\29
H:\TIE\T7NR1W\128

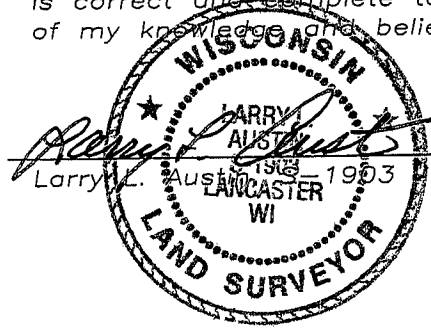
DRAWN BY: ML DIGMAN
APPROVED: LL AUSTIN

U.S. PUBLIC LAND SURVEY MONUMENT RECORD

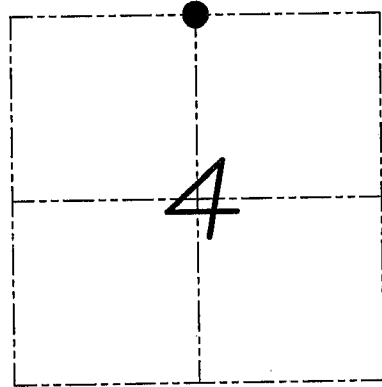
Section 4, Town 6 North Range 1 West, Town of Wingsville, Grant County, Wisconsin

CERTIFICATE

I, Larry L. Austin, do hereby certify that the corner location on this record was determined by me and/or under my direct supervision and that this U.S. public land survey monument record is correct and complete to the best of my knowledge and belief.



10-15-08
date



● = CORNER LOCATION

HISTORY OF CORNER

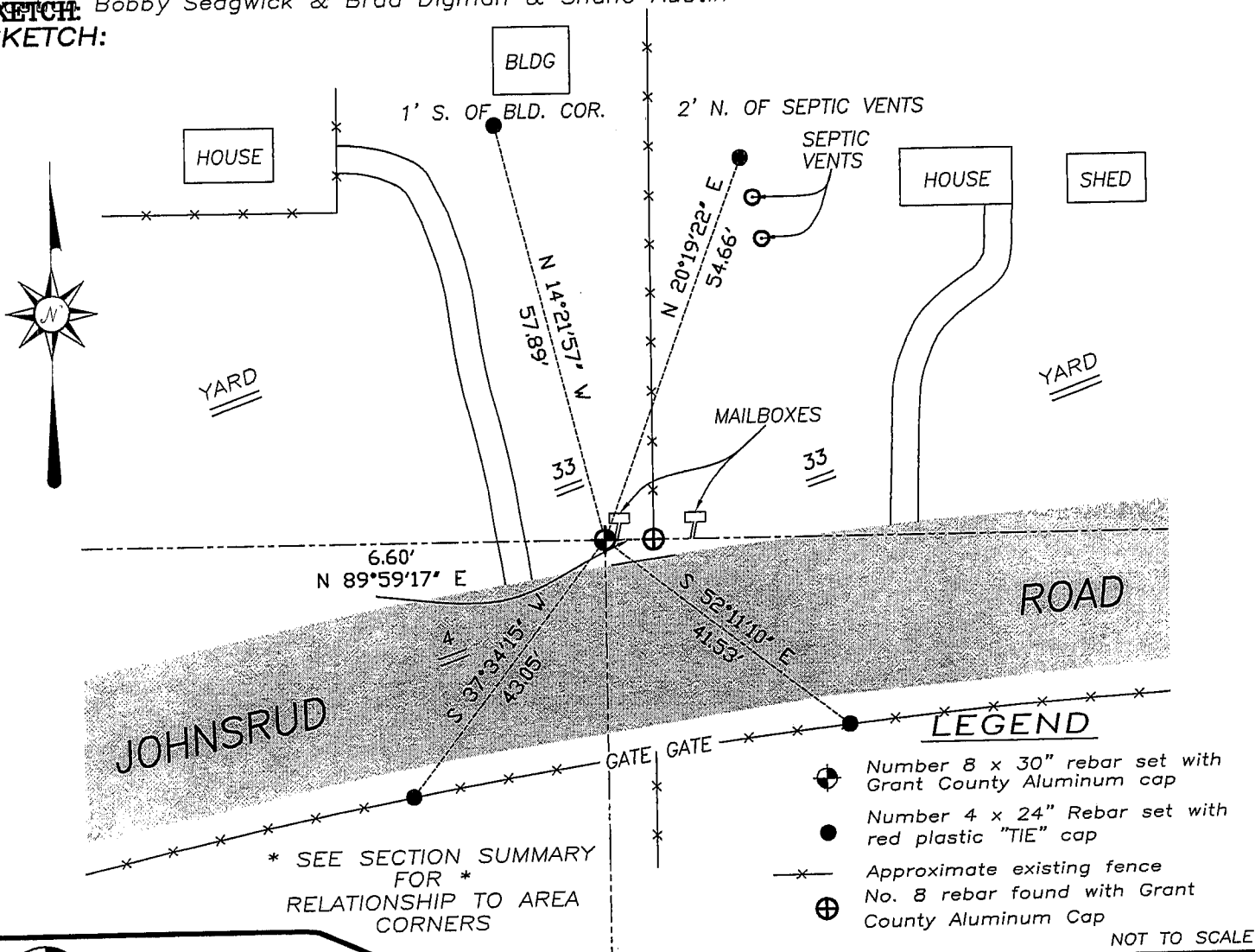
Corner was never originally set.
No other record of the corner was found.

CORNER EVIDENCE FOUND

I set the corner at the proportioned offset from the existing South 1/4 corner of Section 33. Verified this location using EDM & GPS methods.

DESCRIPTION OF CORNER AND WITNESS MONUMENTS, references and accessories used to perpetuate the original or re-established location of this corner. Witnesses to monument set by Bobby Sedgwick & Brad Digman & Shane Austin

SKETCH:
SKETCH:



* SEE SECTION SUMMARY FOR *
RELATIONSHIP TO AREA CORNERS

LEGEND

- (with cap symbol) Number 8 x 30" rebar set with Grant County Aluminum cap
- (solid) Number 4 x 24" Rebar set with red plastic "TIE" cap
- x- Approximate existing fence
- ⊕ (with cap symbol) No. 8 rebar found with Grant County Aluminum Cap

NOT TO SCALE



Austin Engineering LLC

4211 HWY 81 E, LANCASTER, WI 53813
PHONE 608-723-6363 FAX 608-723-6702

JOB NUMBER 07S339
FIELDBOOK: TDSR,
G:\T7NR1W\29
H:\TIE\T6NR1W\08

DRAWN BY: BL STANFLEY
APPROVED: LL AUSTIN

08