

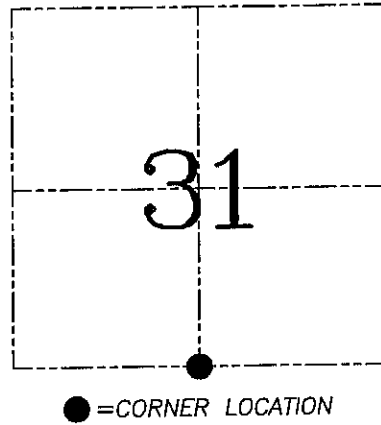
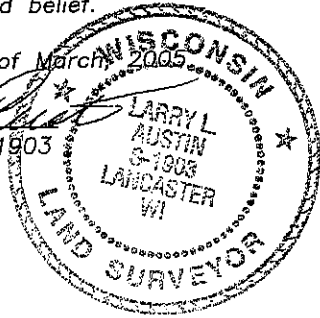
U.S. PUBLIC LAND SURVEY MONUMENT RECORD – GRANT COUNTY, WI
Section 31, Town 7 North Range 1 West, Town of Castle Rock

CERTIFICATE

I, Larry L. Austin, do hereby certify that the corner location on this record was determined by me and/or under my direct supervision and that this U.S. public land survey monument record is correct and complete to the best of my knowledge and belief.

Dated this 5th day of March, 2005

Larry L. Austin
 Larry L. Austin S-1903



HISTORY OF CORNER ESTABLISHMENT

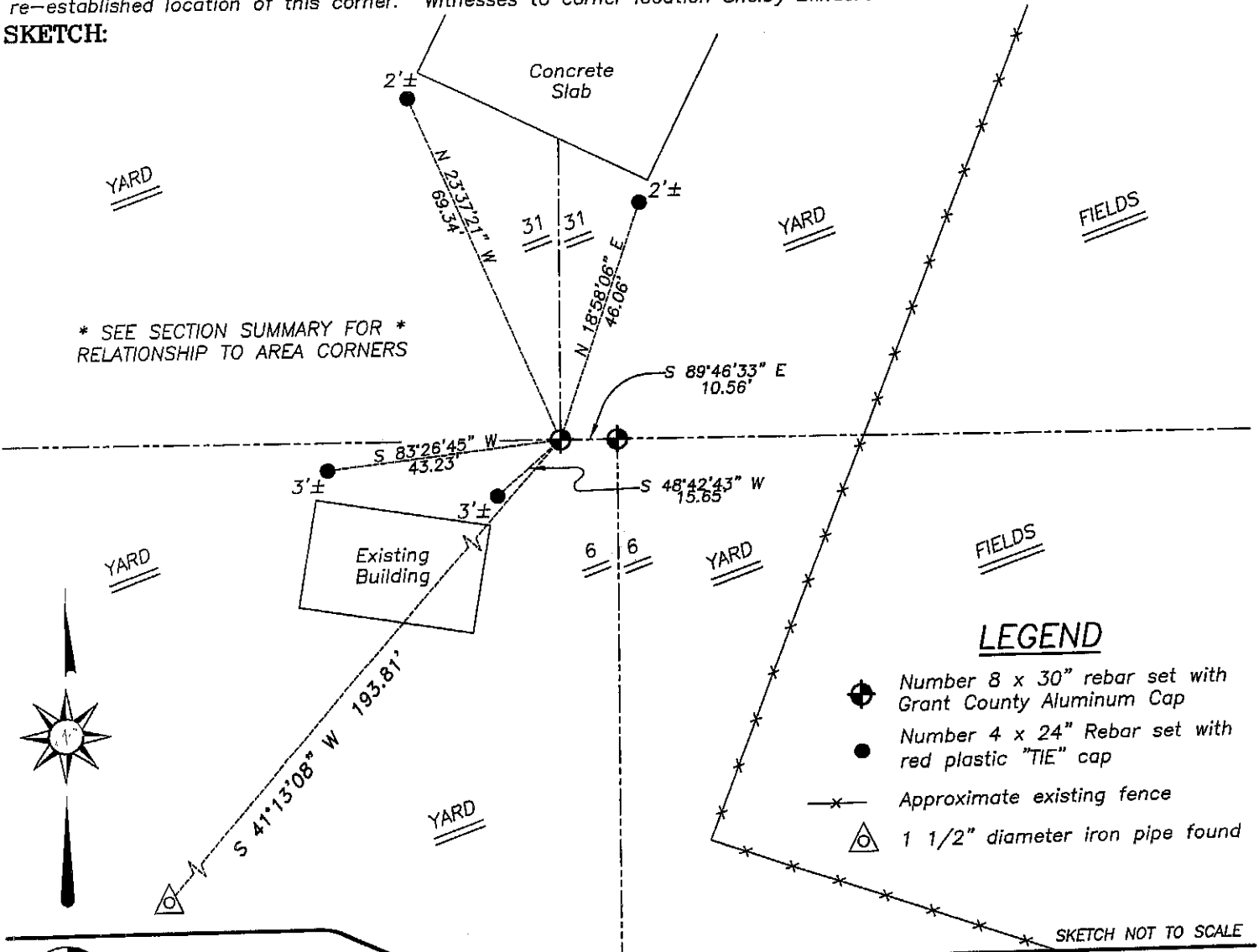
Corner was originally set in 1832 by Sibley. In 1983 Bowden measured to a 1.5" iron pipe at this location.

DESCRIPTION OF CORNER EVIDENCE FOUND

I found the 1.5" iron pipe and found it to be inaccurately set. I reset the corner proportionately and on-line between the Southwest and Southeast corners. Verified this location using EDM & GPS methods.

DESCRIPTION OF CORNER AND WITNESS MONUMENTS, references and accessories used to perpetuate the original or re-established location of this corner. Witnesses to corner location Shelby Blindert & Brad Hazen.

SKETCH:



LEGEND

- Number 8 x 30" rebar set with Grant County Aluminum Cap
- Number 4 x 24" Rebar set with red plastic "TIE" cap
- x- Approximate existing fence
- △ 1 1/2" diameter iron pipe found

SKETCH NOT TO SCALE

Austin Engineering LLC
 4211 HWY 81 E, LANCASTER, WI 53813
 PHONE 608-723-6363 FAX 608-723-6702

JOB NUMBER: 01s054
 FIELDBOOK: TDSR, 2502
 G:\T7NR2W\35
 H:\TIE\T7NR1W\132

DRAWN BY: BJ HAZEN
 APPROVED: LL AUSTIN

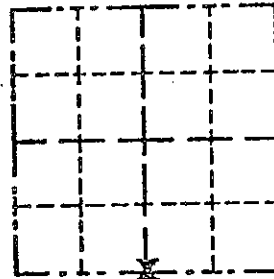
GRANT COUNTY

Survey Monument Record

TYPE OF MONUMENT 1 1/2" x 24" Iron Pipe
 STATE PLANE COORDINATES: N _____
 E _____
 ELEVATION — M.S.L. DATUM: _____
 THETA ANGLE: _____
 FIELD BOOK: _____
 PAGE _____

CORNER NO. 132
 SECTION 31
 TOWN 7 N
 RANGE 1 W

*Castle
Road
207*



LOCATION
(Indicated by "X")

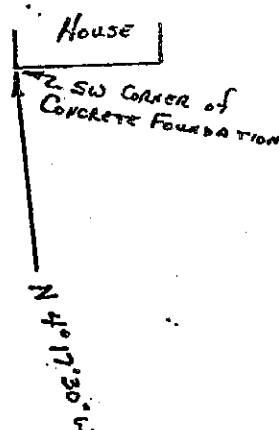
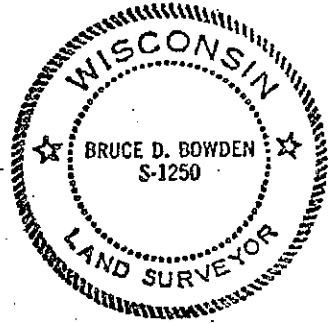
BASIS FOR MONUMENT LOCATION

(Use reverse side if necessary)

Show info such as: History of corner, with reference to Vol. and pg., dates, surveyor; exact description of monument replaced; if location computed, by taped or EDM traverse; landowner, remarks, etc.

SEAL:

Corner set by single proportionate measurement and checked with existing physical evidence within the section.



CERTIFIED CORRECT

Bruce D. Bowden
 Registered Land Surveyor

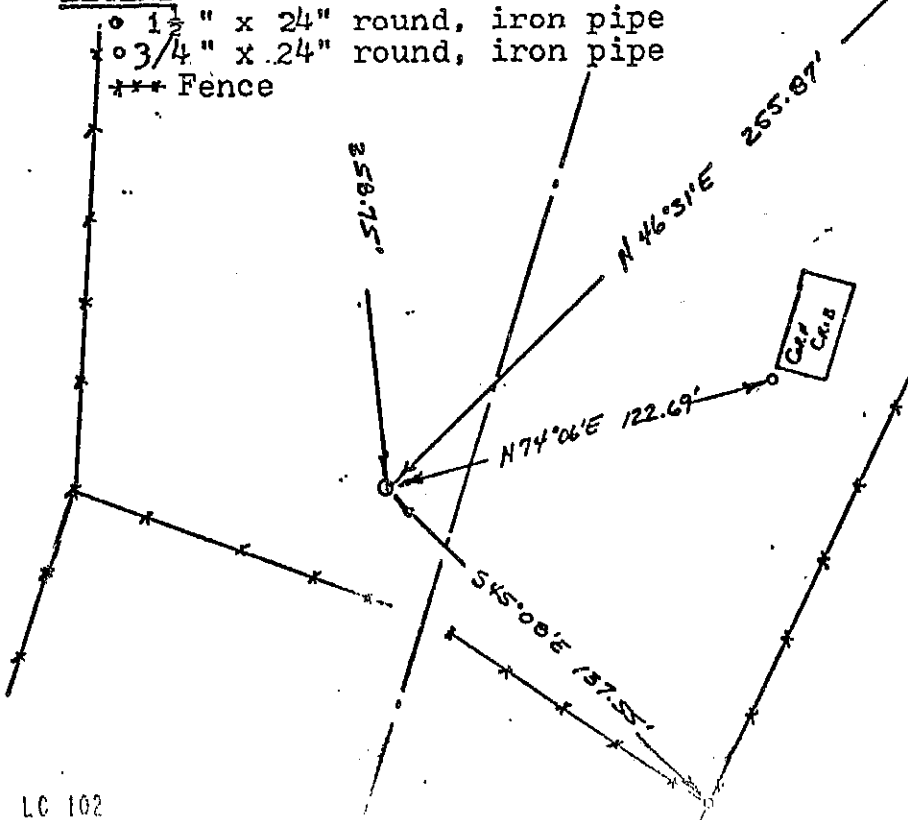
DATE: AUGUST 2, 1983

TIE SKETCH

Show at least three (3) ties and monument

LEGEND

- 1 1/2" x 24" round, iron pipe
- 3/4" x 24" round, iron pipe
- *** Fence



SCALE : 1" = 30'

AUG 8 1983

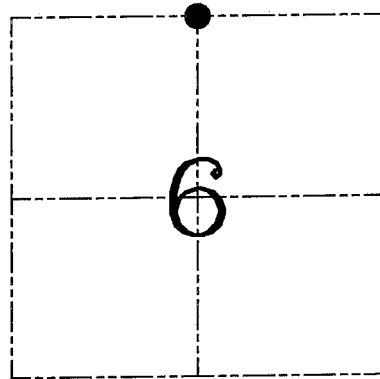
U.S. PUBLIC LAND SURVEY MONUMENT RECORD – GRANT COUNTY, WI
Section 6, Town 6 North Range 1 West, Town of Wingville

CERTIFICATE

I, Larry L. Austin, do hereby certify that the corner location on this record was determined by me and/or under my direct supervision and that this U.S. public land survey monument record is correct and complete to the best of my knowledge and belief.

Dated this 5th day of March, 2005

Larry L. Austin
 Larry L. Austin

● = CORNER LOCATION

HISTORY OF CORNER ESTABLISHMENT

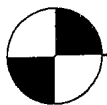
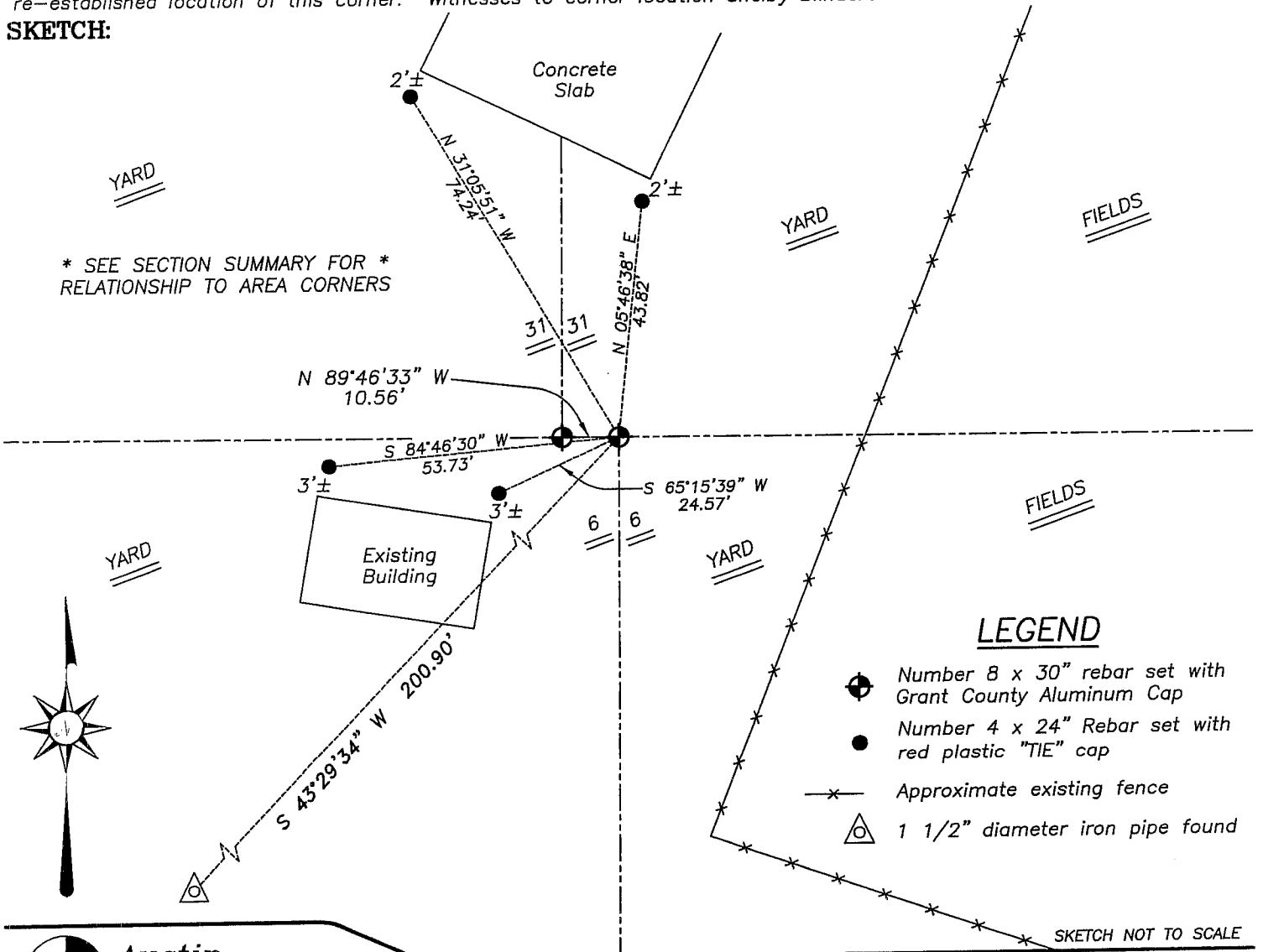
Corner was never originally set.
 No other record of the corner was found.

DESCRIPTION OF CORNER EVIDENCE FOUND

I reset the corner at the correct offset from the South 1/4 of Section 31, T7N R1W. Verified this location using EDM & GPS methods.

DESCRIPTION OF CORNER AND WITNESS MONUMENTS, references and accessories used to perpetuate the original or re-established location of this corner. Witnesses to corner location Shelby Blindert & Brad Hazen.

SKETCH:



Austin Engineering LLC

4211 HWY 81 E, LANCASTER, WI 53813
 PHONE 608-723-6363 FAX 608-723-6702

JOB NUMBER: 01s054
 FIELDBOOK: TDSR, 2502
 G:\T7NR2W\35
 H:\TIE\T6NR1W\12

DRAWN BY: BJ HAZEN
 APPROVED: LL AUSTIN