

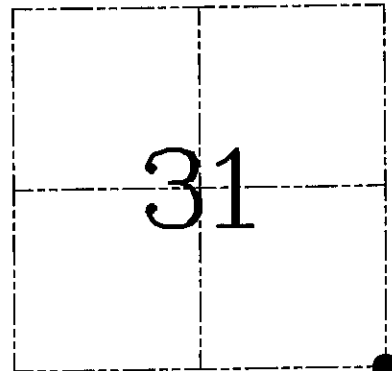
**U.S. PUBLIC LAND SURVEY MONUMENT RECORD – GRANT COUNTY, WI**  
**Section 31, Town 7 North Range 1 West, Town of Castle Rock**

CERTIFICATE

I, Larry L. Austin, do hereby certify that the corner location on this record was determined by me and/or under my direct supervision and that this U.S. public land survey monument record is correct and complete to the best of my knowledge and belief.

Dated this 5th day of March, 2005

*Larry L. Austin*  
 Larry L. Austin  
 St. 1903-1908  
 LANCASTER  
 WI  
 LAND SURVEYOR



● = CORNER LOCATION

HISTORY OF CORNER ESTABLISHMENT

Corner was originally set in 1832 by Sibley. In 1983 Bowden showed a 1 1/2" iron pipe at this location. No other record of the corner was found.

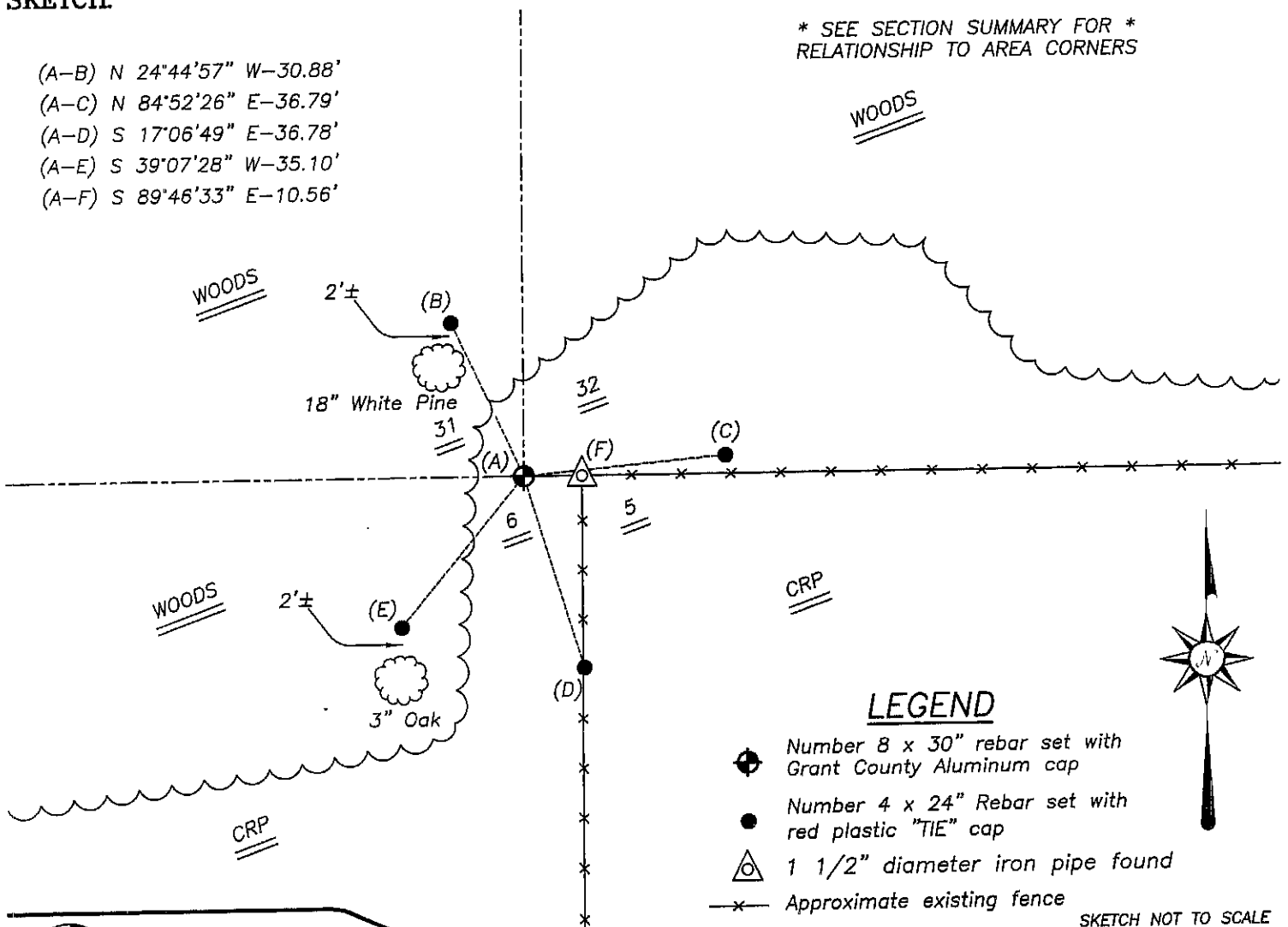
DESCRIPTION OF CORNER EVIDENCE FOUND

I found the 1 1/2" iron pipe but it is marking the Northeast corner of Section 6. I set the corner at the recorded offset from the 1 1/2" iron pipe. Verified this location using EDM & GPS methods.

DESCRIPTION OF CORNER AND WITNESS MONUMENTS, references and accessories used to perpetuate the original or re-established location of this corner. Witnesses to corner location Shelby Blindert and Brad Hazen.

**SKETCH:**

- (A-B) N 24°44'57" W-30.88'
- (A-C) N 84°52'26" E-36.79'
- (A-D) S 17°06'49" E-36.78'
- (A-E) S 39°07'28" W-35.10'
- (A-F) S 89°46'33" E-10.56'



\* SEE SECTION SUMMARY FOR \*  
 RELATIONSHIP TO AREA CORNERS

**LEGEND**

- Number 8 x 30" rebar set with Grant County Aluminum cap
- Number 4 x 24" Rebar set with red plastic "TIE" cap
- △ 1 1/2" diameter iron pipe found
- x- Approximate existing fence

SKETCH NOT TO SCALE



**Austin Engineering LLC**

4211 HWY B1 E, LANCASTER, WI 53813  
 PHONE 608-723-6363 FAX 608-723-6702

JOB NUMBER 01S054  
 FIELDBOOK: TDSR, 2502  
 G:\T7NR2W\35  
 H:\TIE\T7NR1W\131

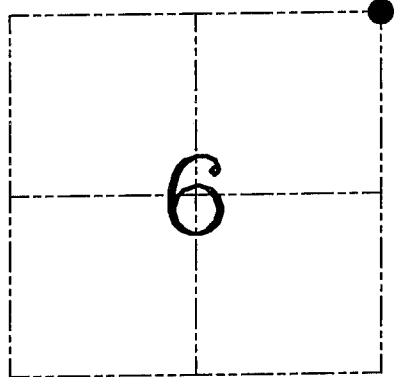
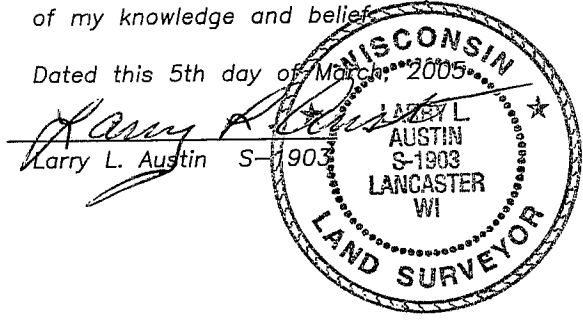
DRAWN BY: BJ HAZEN  
 APPROVED: LL AUSTIN

**U.S. PUBLIC LAND SURVEY MONUMENT RECORD – GRANT COUNTY, WI**  
**Section 6, Town 6 North Range 1 West, Town of Wingville**

CERTIFICATE

I, Larry L. Austin, do hereby certify that the corner location on this record was determined by me and/or under my direct supervision and that this U.S. public land survey monument record is correct and complete to the best of my knowledge and belief.

Dated this 5th day of March, 2005.



● = CORNER LOCATION

HISTORY OF CORNER ESTABLISHMENT

Corner was originally set in 1833 by Sibley. In 1983 Bowden set a 1 1/2" iron pipe at an occupied fence corner. No other record of the corner was found.

DESCRIPTION OF CORNER EVIDENCE FOUND

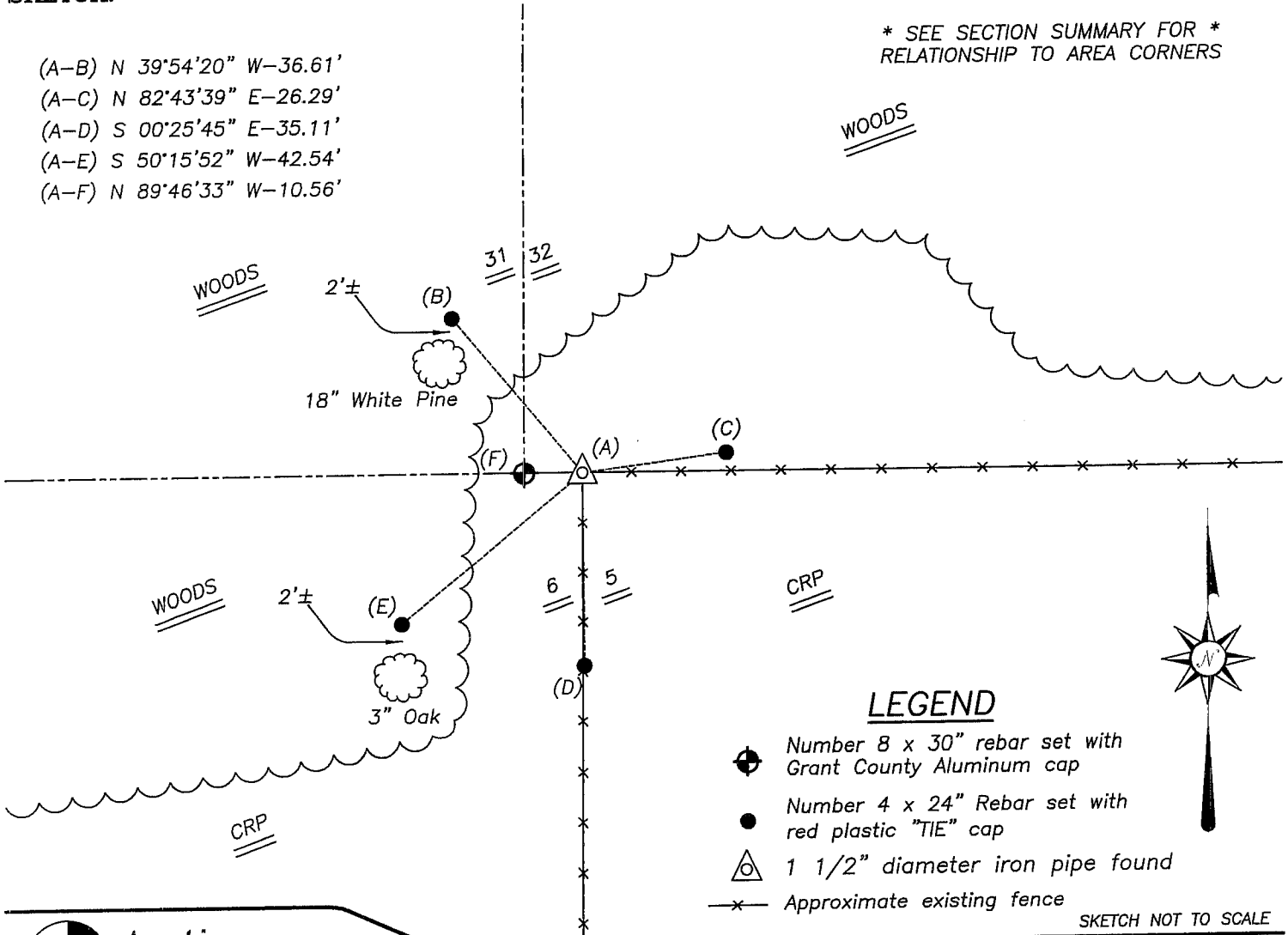
I found and accepted the 1 1/2" iron pipe.  
 Verified this location using EDM & GPS methods.

DESCRIPTION OF CORNER AND WITNESS MONUMENTS, references and accessories used to perpetuate the original or re-established location of this corner. Witnesses to corner location Shelby Blindert and Brad Hazen.

**SKETCH:**

- (A-B) N 39°54'20" W-36.61'
- (A-C) N 82°43'39" E-26.29'
- (A-D) S 00°25'45" E-35.11'
- (A-E) S 50°15'52" W-42.54'
- (A-F) N 89°46'33" W-10.56'

\* SEE SECTION SUMMARY FOR \*  
 RELATIONSHIP TO AREA CORNERS



**LEGEND**

- Number 8 x 30" rebar set with Grant County Aluminum cap
- Number 4 x 24" Rebar set with red plastic "TIE" cap
- △ 1 1/2" diameter iron pipe found
- x- Approximate existing fence

SKETCH NOT TO SCALE

**Austin Engineering LLC**  
 4211 HWY 81 E, LANCASTER, WI 53813  
 PHONE 608-723-6363 FAX 608-723-6702

JOB NUMBER 01S054  
 FIELDBOOK: TDSR, 2502  
 G:\T7NR2W\35  
 H:\TIE\T6NR1W\11

DRAWN BY: BJ HAZEN  
 APPROVED: LL AUSTIN