

CERTIFIED LAND CORNER

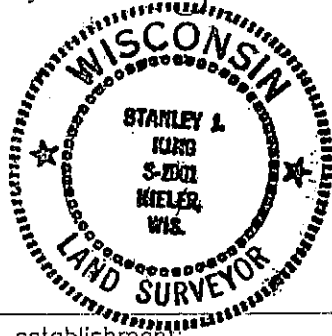
STATE OF WISCONSIN COUNTY OF GRANT

CERTIFICATE

I, Stanley King, do hereby certify that on the 16th day of February, 2000, I found no evidence of the South 1/4 corner of SECTION 23, T7N, R1W, Fourth Principal Meridian, and I re-established said corner according to the Wisconsin Statutes as shown and described hereon.

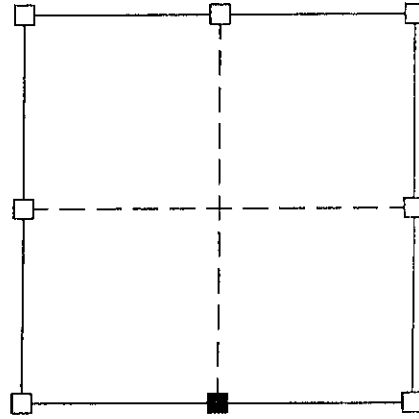
Dated this 17th day of February, 2000

Stanley King
Registered Land Surveyor--S-2001
Title



Seal:

SECTION 23



■ = Corner Location
T7N R1W
Town of: CASTLE ROCK

Original corner establishment:

DIVISION OF SECTION

Description of corner evidence found:

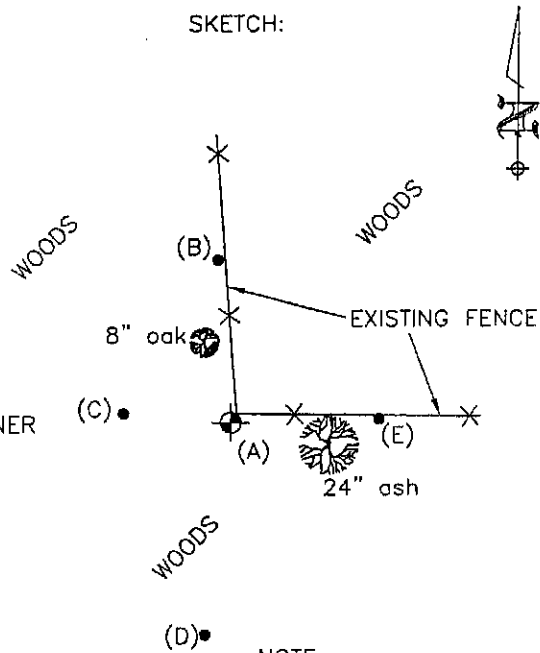
FOUND NO EVIDENCE OF THE CORNER OR ITS WITNESS--
SET A REBAR WEIGHING A MIN. OF 1.50 LBS. PER LINEAL FOOT
WITH GRANT COUNTY MONUMENT CAP.

Description of corner and witness monuments, references, and accessories used to perpetuate the original or re-established location of this corner.

Witnesses to corner location:

Stanley J. King
Brad J. Hazen
Michael M. Miller
.....
.....

SKETCH:



- ⊕ = SECTION CORNER
- = TIE BAR

- (A-B)=28.00'
- (A-C)=18.37'
- (A-D)=36.94'
- (A-E)=25.20'

NOTE:

All points set being a 3/4" rebar weighing 1.50 lbs./lin. ft.

SURVEY CONTROL ORDER

Horizontal:

Vertical:

Corner	East (x)	North (y)	Elevation (z)	Zone
Control Sta. Name				