

# CERTIFIED LAND CORNER

## STATE OF WISCONSIN COUNTY OF GRANT

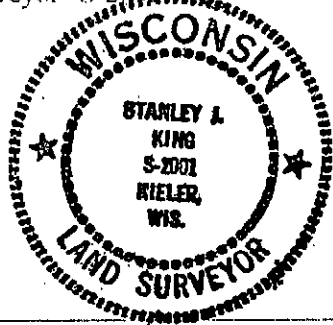
### CERTIFICATE

I, Stanley King, do hereby certify that on the 16th day of February, 2000, I found no evidence of the South East corner of SECTION 23, T7N, R1W, Fourth Principal Meridian, and I re-established said corner according to the Wisconsin Statutes as shown and described hereon.

Dated this 17th day of February, 2000

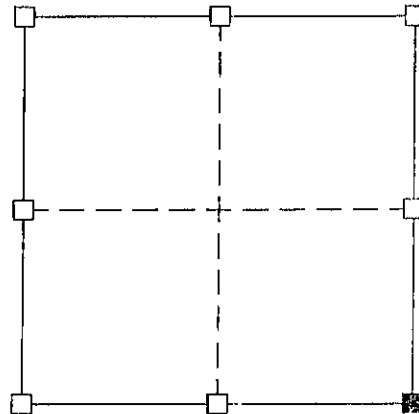
*Stanley King*  
Registered Land Surveyor--S-2001

Title



Seal:

### SECTION 23



■ = Corner Location  
T7N R1W  
Town of: CASTLE ROCK

History of original corner establishment:  
DIVISION OF SECTION

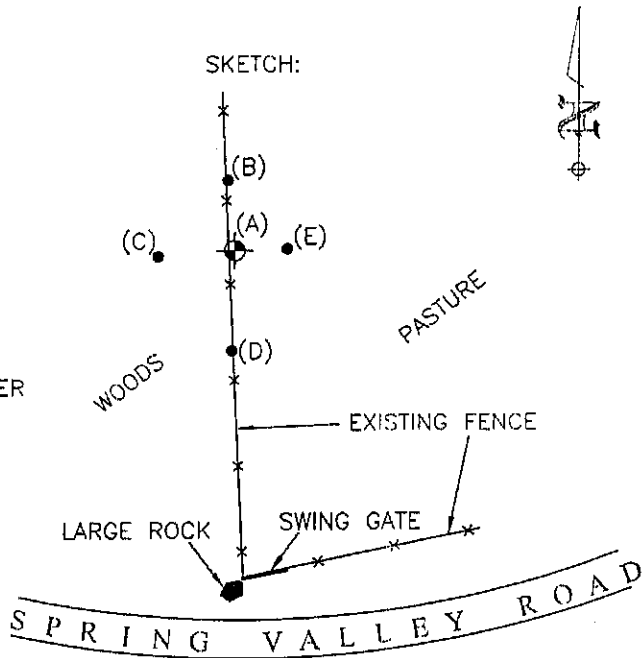
Description of corner evidence found:  
FOUND NO EVIDENCE OF THE CORNER OR ITS WITNESS--  
SET A REBAR WEIGHING A MIN. OF 1.50 LBS. PER LINEAL FOOT  
WITH GRANT COUNTY MONUMENT CAP.

Description of corner and witness monuments, references, and accessories used to perpetuate the original or re-established location of this corner.

Witnesses to corner location:

Stanley J. King  
Brad J. Hazen  
Michael M. Miller

#### SKETCH:



⊙ = SECTION CORNER

● = TIE BAR

(A-B)=24.06'

(A-C)=26.23'

(A-D)=34.53'

(A-E)=17.81'

#### SURVEY CONTROL ORDER

Horizontal:

Vertical:

#### NOTE:

All points set being a 3/4" rebar weighing 1.50 lbs./lin. ft.

Corner	East (x)	North (y)	Elevation (z)	Zone
Control Sta. Name				