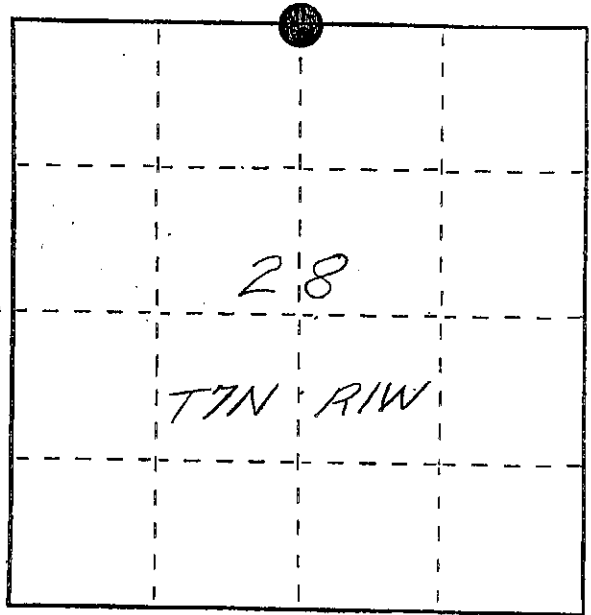


# U. S. PUBLIC LAND SURVEY MONUMENT RECORD

**INSTRUCTIONS:** This record shall show the location of the corner and shall include all of the following nine elements (a through i).

- (a) Identify the corner by reference to the U.S. public land survey system.  
 ● = Corner monument restored.



The North Quarter Corner of Section 28, Town 7 North, Range 1 West, Castle Rock Township, Grant County, Wisconsin.

- (b) Describe any record evidence, monument evidence, occupational evidence, testimonial evidence or any other material evidence you considered, and whether the monument was found or placed.

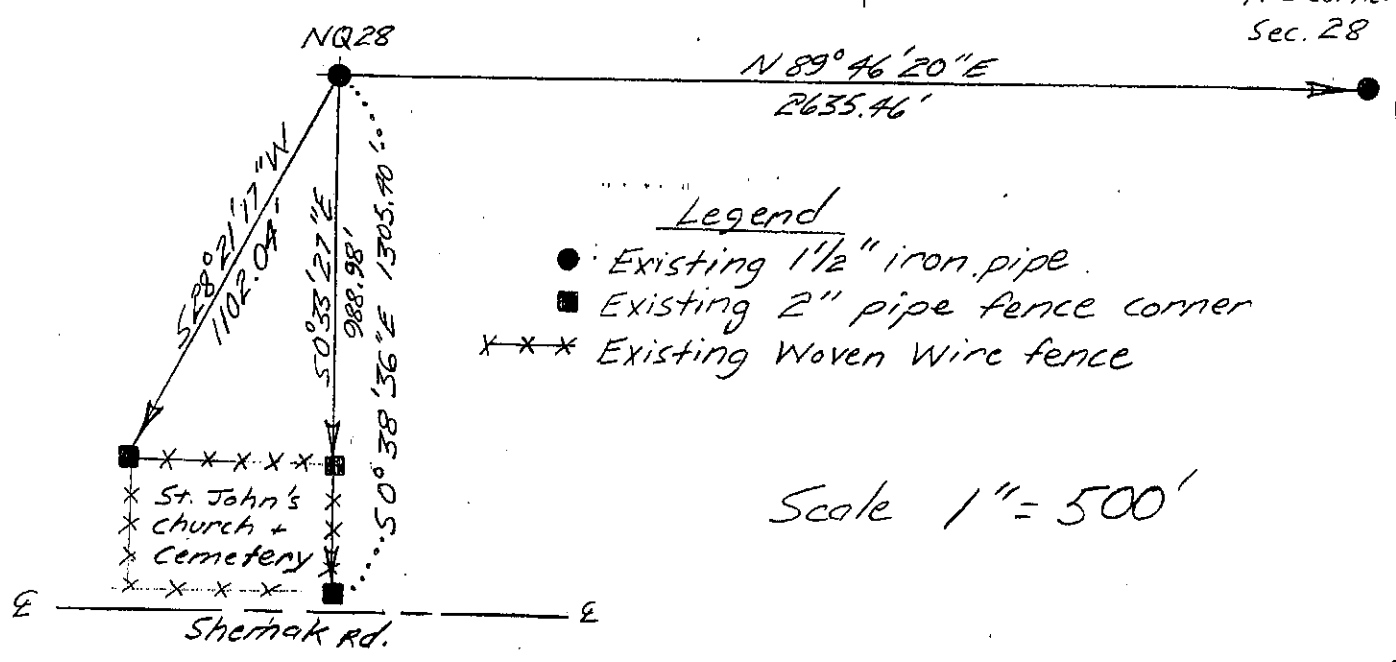
A 1 1/2" iron pipe was found and accepted as the corner location after verification by proportionate measurements from a GPS and EDM survey of the area.

- (c) In the plan view drawing below, provide reference ties to at least 4 witness monuments, or, if the location is within a municipality, to at least 2 witness monuments. (Witness monuments shall be made of concrete, natural stone, iron or other equally durable material, ~~except~~ wood.) Describe witness monuments.

- (d) Show a plan view drawing depicting the relevant monuments and reference ties which is sufficient in detail to enable accurate relocation of the corner monument if the corner monument is disturbed. Indicate north.

Grid North  
Grant County  
Coordinate System

NE corner  
Sec. 28



- Legend
- Existing 1 1/2" iron pipe
  - Existing 2" pipe fence corner
  - x x x Existing Woven Wire fence

Scale 1" = 500'

