

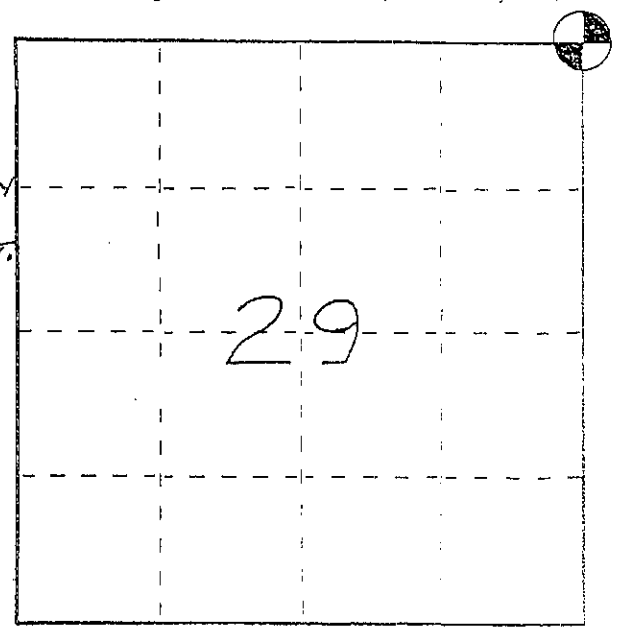
U. S. PUBLIC LAND SURVEY MONUMENT RECORD

DEC 7 1963

INSTRUCTIONS: This record shall show the location of the corner and shall include all of the following nine elements (a through i).

- (a) Identify the corner by reference to the U.S. public land survey system.
- = Corner monument restored.

NORTHEAST CORNER OF SECTION
29, TOWN 7 NORTH, RANGE 1 WEST,
CASTLE ROCK TOWNSHIP,
GRANT COUNTY, WISC.

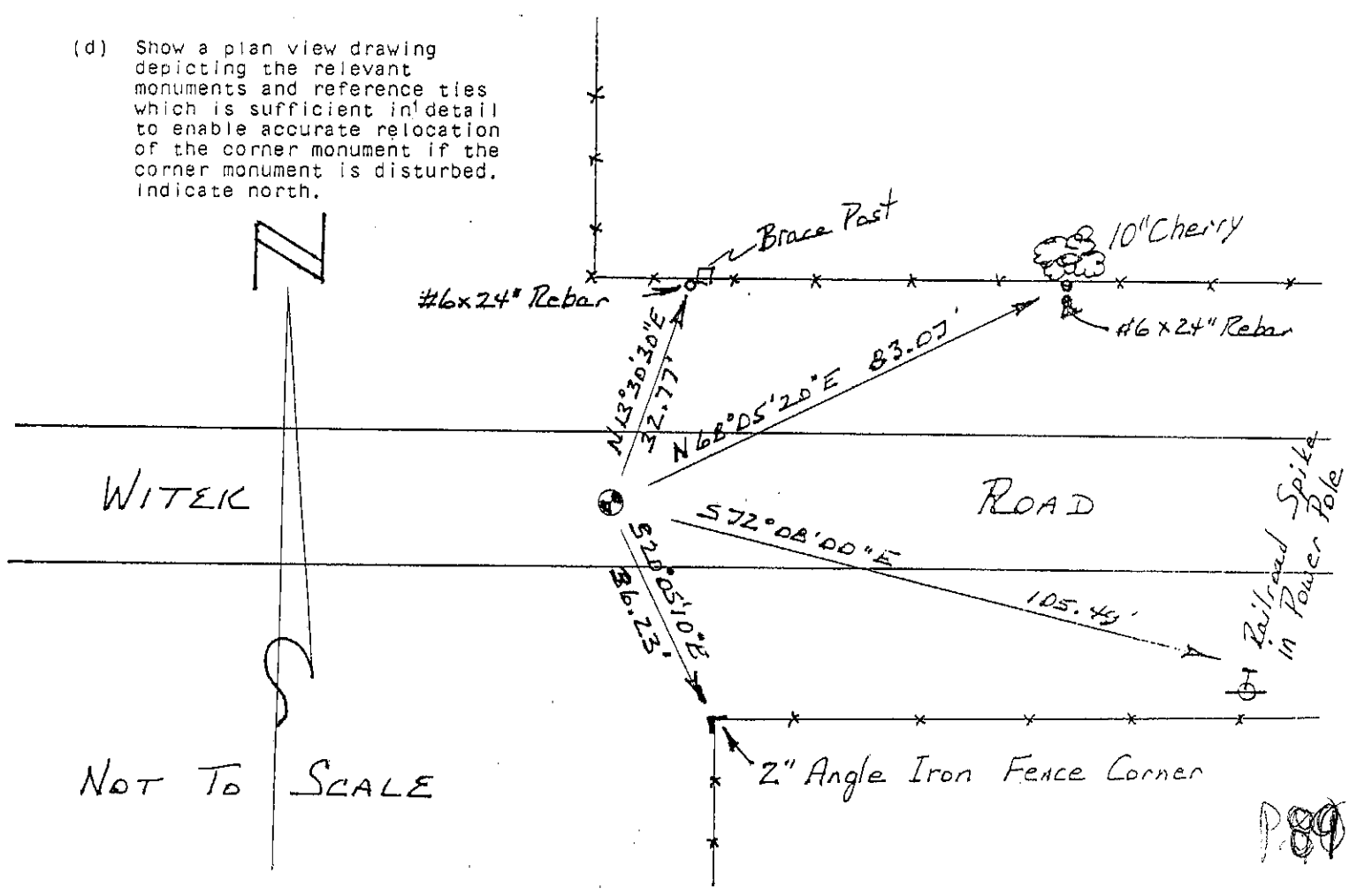


- (b) Describe any record evidence, monument evidence, occupational evidence, testimonial evidence or any other material evidence you considered, and whether the monument was found or placed.

FOUND AND ACCEPTED A 3/8" REBAR AT THE CENTER OF THE TOWN ROAD AND THE INTERSECTION WITH THE FENCES AFTER THE LOCATION WAS VERIFIED WITH PROPORTIONATE MEASUREMENTS FROM AN EDM TRAVERSE OF THE AREA.

- (c) In the plan view drawing below, provide reference ties to at least 4 witness monuments, or, if the location is within a municipality, to at least 2 witness monuments. (Witness monuments shall be made of concrete, natural stone, iron or other equally durable material, ~~except~~ ~~wood~~.) Describe witness monuments.

- (d) Show a plan view drawing depicting the relevant monuments and reference ties which is sufficient in detail to enable accurate relocation of the corner monument if the corner monument is disturbed. Indicate north.



P.89

(e) Describe any material discrepancy between the location of the corner as restored or reestablished and the location of that corner as previously restored or reestablished by distance and direction. Show the discrepancy on the plan view drawing under (d), above. Show the distances between the corner as previously restored or reestablished and (1) the corner as restored or reestablished, and (2) to at least 2 of the witness monuments shown on the drawing in (d), above.

NONE

(f) Was the corner restored through acceptance of ~~(1) an obliterated evidence location, or (2) a found perpetuated location?~~

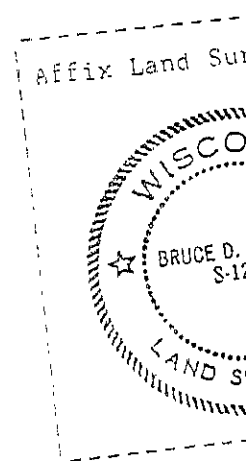
(g&h) Was the corner reestablished through lost corner proportionate methods? If so, show the method, including the directions and distances to other public land survey corners used as evidence or used for proportioning in determining the corner location?

No.

(i) I, BRUCE D. BOWDEN,
(type or print name) certify that the corner location shown on this record was determined by me or under my direction and control and that this U.S. Public Land Survey Monument Record is correct and complete to the best of my knowledge and belief.

Bruce D. Bowden

Nov 15, 1993
Date



Affix Land Survey

GRANT COUNTY

Survey Monument Record

TYPE OF MONUMENT 1" SOLID, ROUND, IRON ROD

STATE PLANE COORDINATES: N _____
E _____

ELEVATION — M.S.L. DATUM: _____

THETA ANGLE: _____

FIELD BOOK: _____

PAGE _____

CORNER NO. 89

SECTION 28

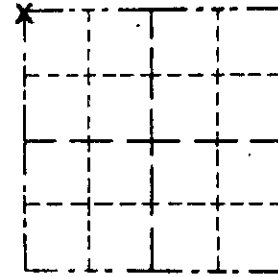
TOWN 7 NORTH

RANGE 1 WEST

BASIS FOR MONUMENT LOCATION

(Use reverse side if necessary)

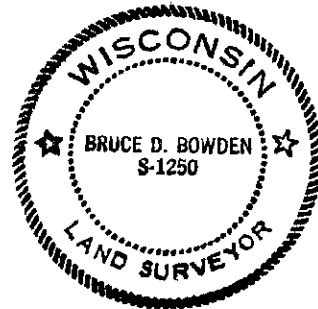
Show info such as: History of corner, with reference to Vol. and pg., dates, surveyor; exact description of monument replaced; if location computed, by taped or EDM traverse; landowner, remarks, etc.



LOCATION
(Indicated by "X")

SEAL:

Solid, round, iron rod found in place as recorded on surveys by Larry Schmit dated April 17, 1978 and David Davis dated August 10, 1981. Accepted monument as being the section corner.



CERTIFIED CORRECT
Bruce D. Bowden

Registered Land Surveyor

DATE: August 26, 1984

TIE SKETCH

Show at least three (3) ties and monument

LEGEND

- Existing 1" round, solid, iron rod
- 1/2" x 24" round, iron pipe set
- *** Fence

