

U.S. PUBLIC LAND SURVEY MONUMENT RECORD

(As Required By s. A-E 7.08, WI Adm. Code)

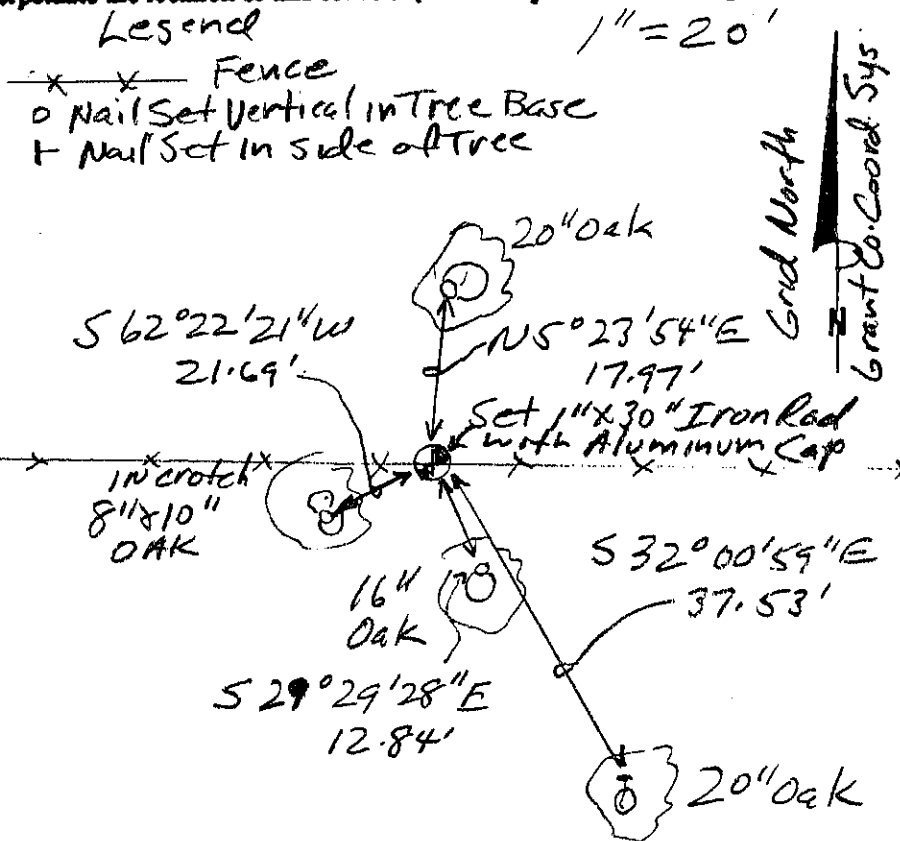
History of original corner establishment and subsequent restorations and description of any record, monument, occupational, testimonial or other evidence considered: *I found no recent records of this corner. I computed the corner location at the intersection of lines between corners 44 & 1/2 mile north with an E-W fence. This location was reasonably balanced with the original government location and also fit well with a computed location per consultation with Bruce Bowden regarding a survey dated 12/21/1988.*

Corner was: (Check All That Apply) *See Section Summary sheet for relationships*

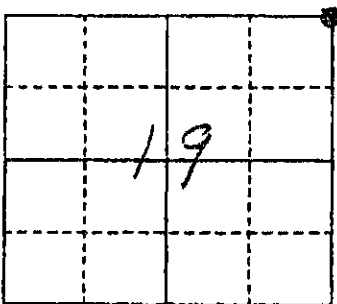
- Restored through acceptance of an obliterated evidence location
- Restored through acceptance of a found perpetuated location
- Considered a lost corner and reestablished through lost corner proportionate methods (include a plan view drawing showing distances and directions to other Public Land Survey Corners used for proportioning and determining the corner location)
- Restored or reestablished in a location that differs from a previous restoration or reestablishment (include a plan view drawing and indicate what was set and/or found)

Describe the monument and accessories used to perpetuate the location of this corner. (Include a plan view drawing and indicate what was set and/or found)

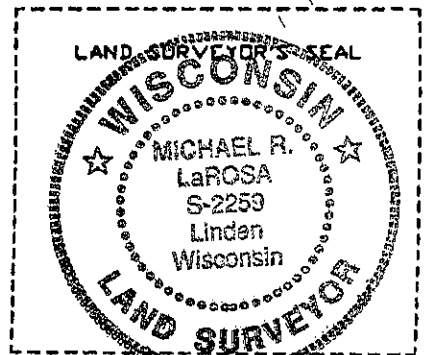
Grant Co. Coords
606422.72
867677.53



The *NE*
 corner of Section *19*
 T. *7* N., R. *1* W
Grant County, Wisconsin
 Job ID: *2005-19*
 Book # *7*



● = Location of Corner



Michael R. LaRosa
 I, *Michael R. LaRosa* (Type or print name) certify that the corner location shown on this record was determined by me or under my direction and control and that this U.S. Public Land Survey Monument Record is correct and complete to the best of my knowledge and belief.

Michael R. LaRosa 1/19/2006

Signature Date

Index No. *71*