

U.S. PUBLIC LAND SURVEY MONUMENT RECORD

(As Required By s. A-E 7.08, WI Adm. Code)

History of original corner establishment and subsequent restorations and description of any record, monument, occupational, testimonial or other evidence considered: *There is an existing fence corner near the subject corner but there is evidence that the fences in this area have migrated in a westerly direction. Also, joint ownership in the past across this corner cast doubts on it. I opted to restore this corner at 1/2 the distance on line between the NE & SE corners @ 50°01'13"W, 2643.99' to each.*

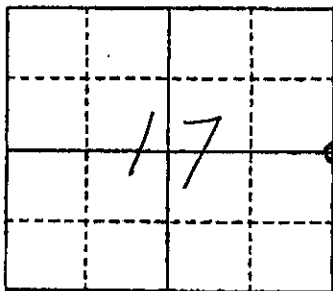
Corner was: (Check All That Apply)

- Restored through acceptance of an obliterated evidence location
- Restored through acceptance of a found perpetuated location
- Considered a lost corner and reestablished through lost corner proportionate methods (include a plan view drawing showing distances and directions to other Public Land Survey Corners used for proportioning and determining the corner location)
- Restored or reestablished in a location that differs from a previous restoration or reestablishment (include a plan view drawing and indicate what was set and /or found)

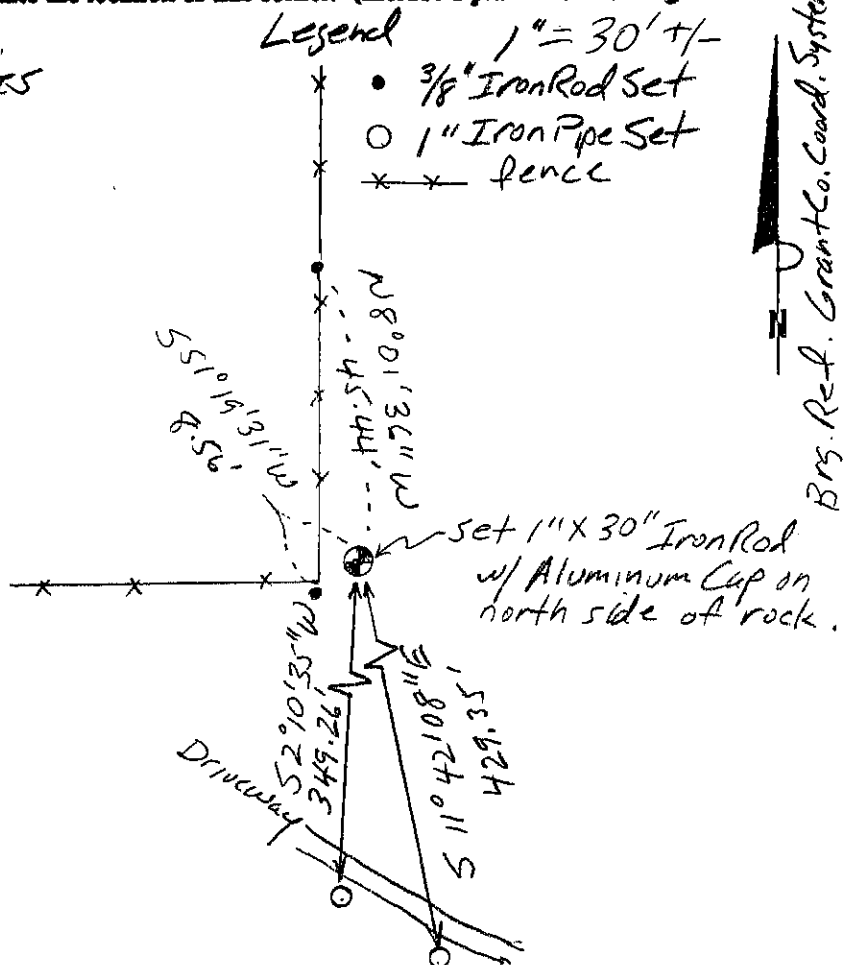
Describe the monument and accessories used to perpetuate the location of this corner. (Include a plan view drawing and indicate what was set and/or found)

Grant County Coordinates
 (W) 609,147.79
 (E) 872,883.44

The E 1/4
 corner of Section 17
 T. 7 N., R. 1W E.,
Grant County, Wisconsin
 Job ID: 2003-70
 Book # 7



● = Location of Corner



Michael R. LaRosa
 I, Michael R. LaRosa certify that the corner location shown on this record was determined by me or under my direction and control and that this U.S. Public Land Survey Monument Record is correct and complete to the best of my knowledge and belief.
Michael R. LaRosa 4/13/2004
 Signature Date

Index No. 56